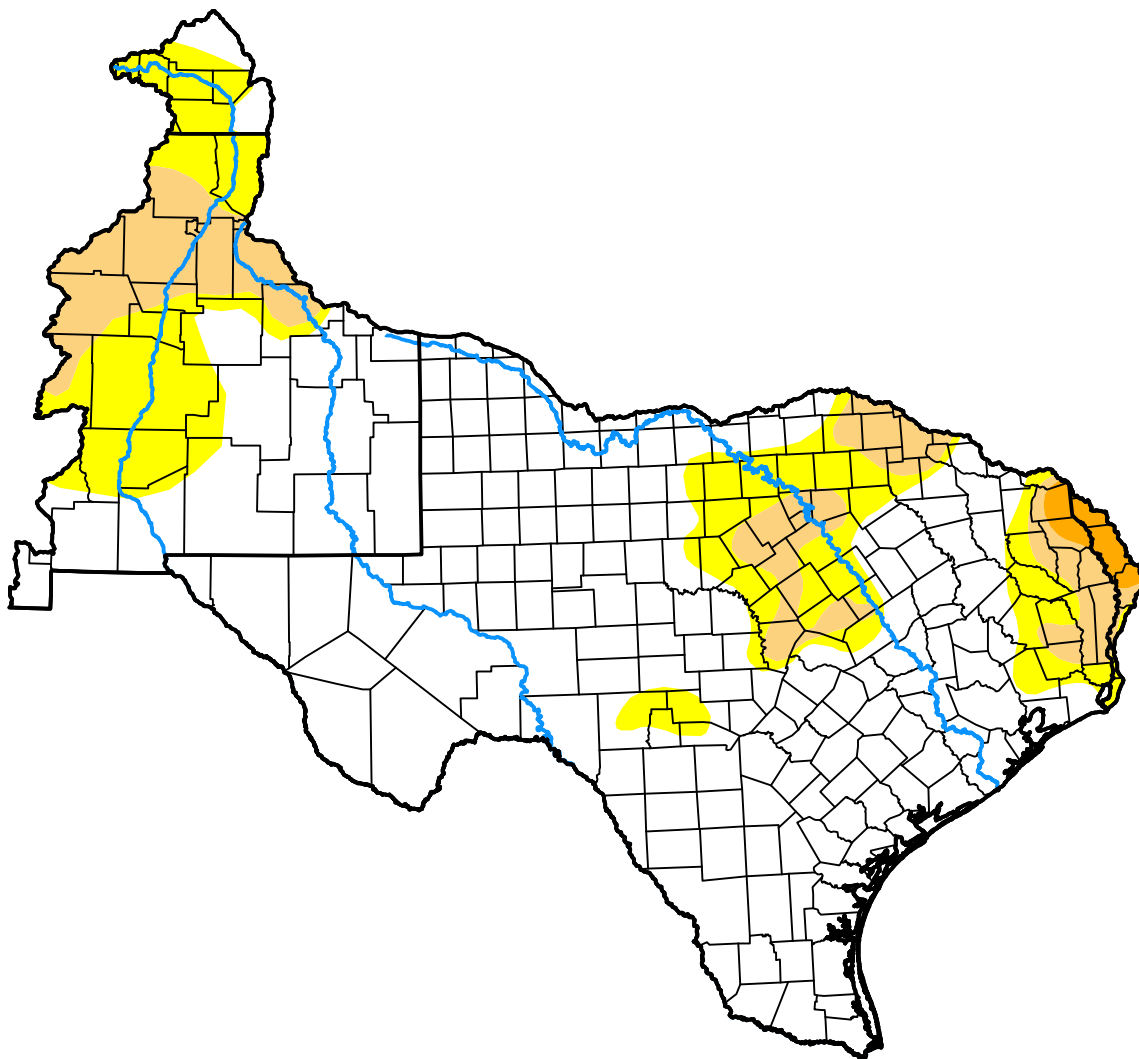


U.S. Drought Monitor West Gulf RFC

July 20, 2010
(Released Thursday, Jul. 22, 2010)
Valid 8 a.m. EDT



Drought Conditions (Percent Area)

	None	D0-D4	D1-D4	D2-D4	D3-D4	D4
Current	71.94	28.06	11.17	0.91	0.00	0.00
Last Week <i>07-15-2010</i>	72.15	27.85	9.76	1.38	0.00	0.00
3 Months Ago <i>04-22-2010</i>	91.69	8.31	0.00	0.00	0.00	0.00
Start of Calendar Year <i>12-31-2009</i>	66.71	33.29	6.12	1.96	0.00	0.00
Start of Water Year <i>10-01-2009</i>	62.05	37.95	23.54	18.54	10.35	2.56
One Year Ago <i>07-23-2009</i>	35.45	64.55	39.76	26.55	20.84	13.91

Intensity:



The Drought Monitor focuses on broad-scale conditions. Local conditions may vary. For more information on the Drought Monitor, go to <https://droughtmonitor.unl.edu/About.aspx>

Author:

Anthony Artusa
NOAA/NWS/NCEP/CPC



droughtmonitor.unl.edu