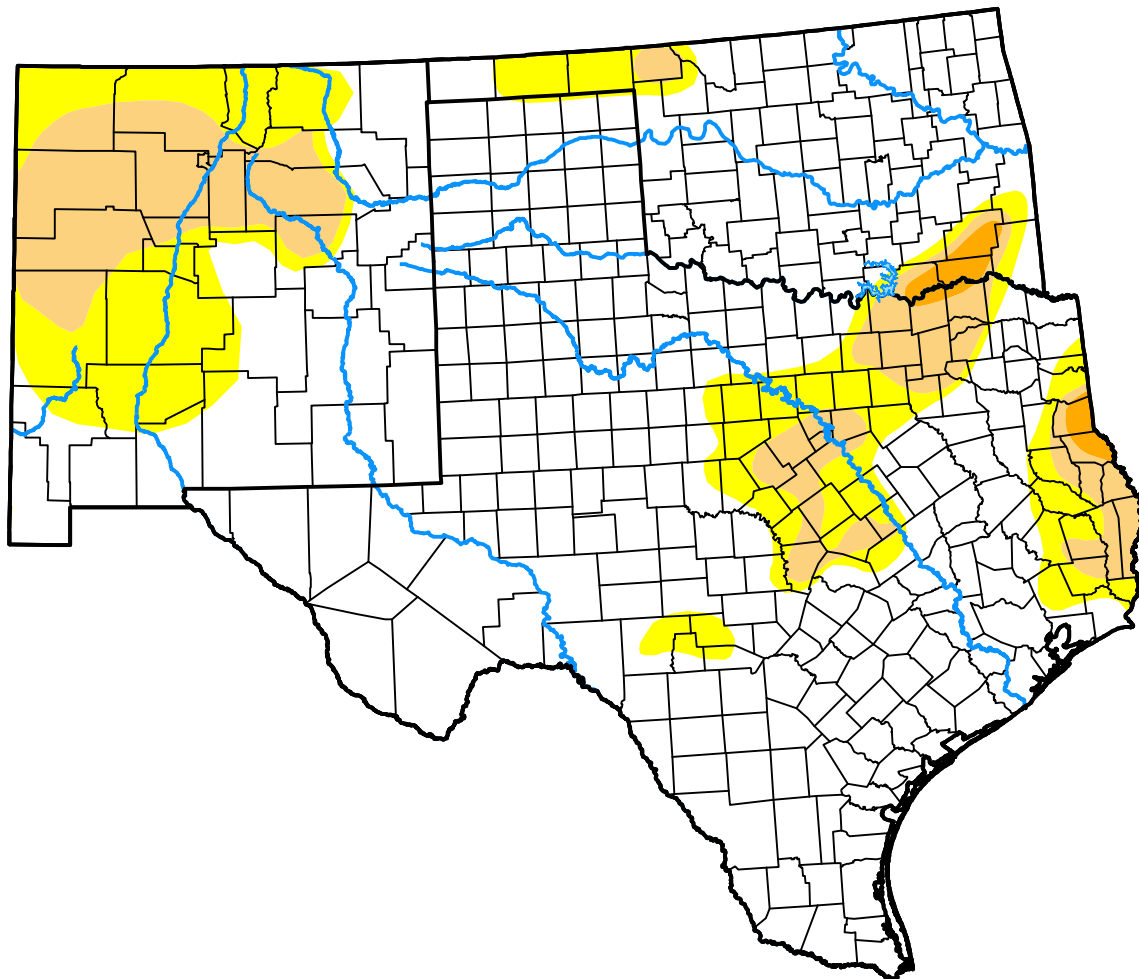


# U.S. Drought Monitor

## Southern Plains RDEWS

**July 20, 2010**  
 (Released Thursday, Jul. 22, 2010)  
 Valid 8 a.m. EDT



Drought Conditions (Percent Area)

	None	D0-D4	D1-D4	D2-D4	D3-D4	D4
<b>Current</b>	73.33	26.67	11.59	0.78	0.00	0.00
<b>Last Week</b> <i>07-13-2010</i>	75.68	24.32	9.59	0.97	0.00	0.00
<b>3 Months Ago</b> <i>04-20-2010</i>	91.47	8.53	0.00	0.00	0.00	0.00
<b>Start of Calendar Year</b> <i>12-29-2009</i>	72.79	27.21	6.75	1.95	0.00	0.00
<b>Start of Water Year</b> <i>09-29-2009</i>	71.51	28.49	16.94	12.75	7.15	1.82
<b>One Year Ago</b> <i>07-21-2009</i>	38.54	61.46	31.68	18.22	14.32	9.58

**Intensity:**

- None
- D0 Abnormally Dry
- D1 Moderate Drought
- D2 Severe Drought
- D3 Extreme Drought
- D4 Exceptional Drought

The Drought Monitor focuses on broad-scale conditions. Local conditions may vary. For more information on the Drought Monitor, go to <https://droughtmonitor.unl.edu/About.aspx>

**Author:**

Anthony Artusa  
 NOAA/NWS/NCEP/CPC



[droughtmonitor.unl.edu](https://droughtmonitor.unl.edu)