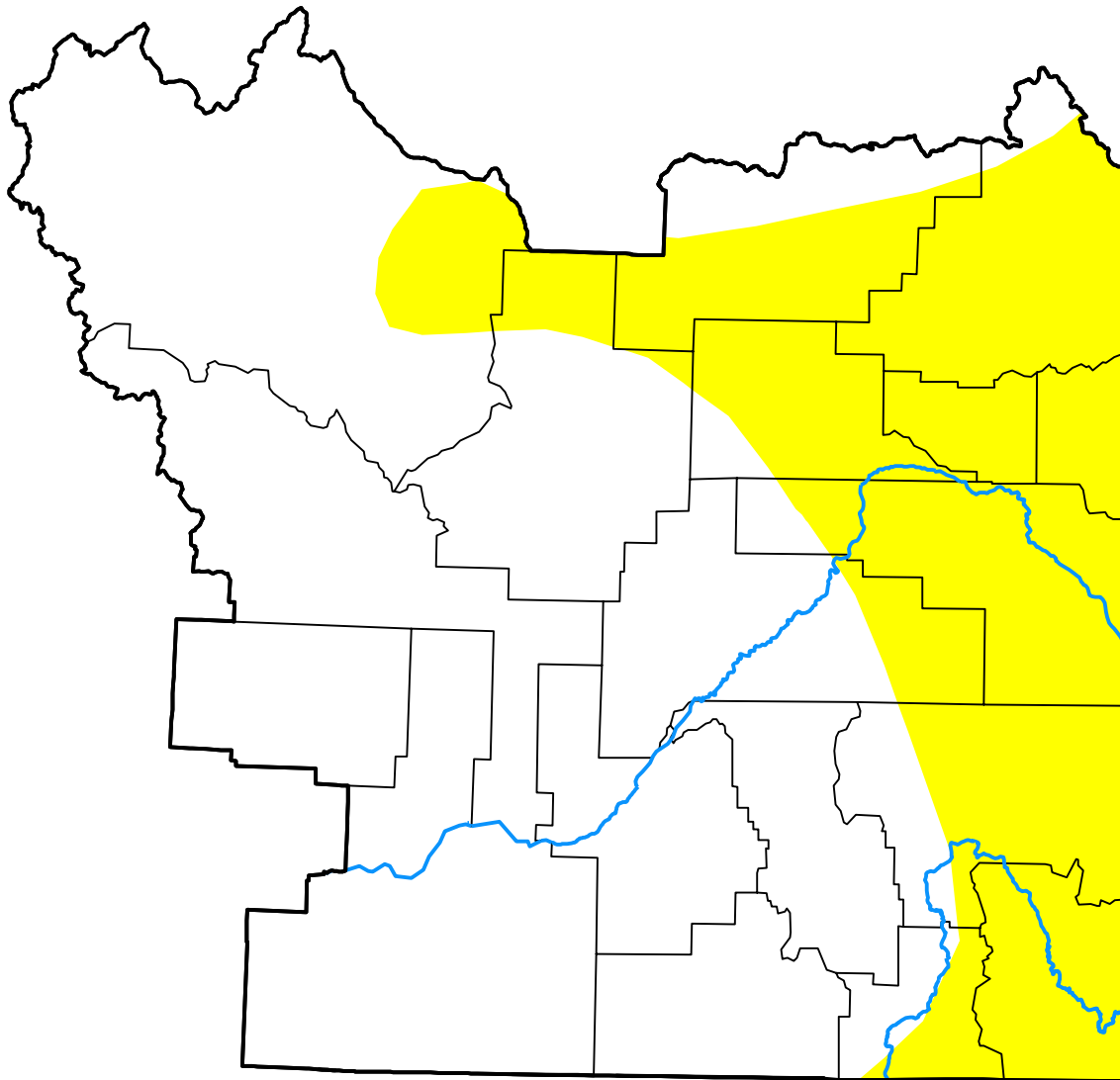


U.S. Drought Monitor

Pocatello, ID WFO

July 20, 2010
 (Released Thursday, Jul. 22, 2010)
 Valid 8 a.m. EDT



Drought Conditions (Percent Area)

	None	D0-D4	D1-D4	D2-D4	D3-D4	D4
Current	66.45	33.55	0.00	0.00	0.00	0.00
Last Week <i>07-15-2010</i>	66.45	33.55	0.00	0.00	0.00	0.00
3 Months Ago <i>04-22-2010</i>	0.00	100.00	74.99	9.12	0.00	0.00
Start of Calendar Year <i>12-31-2009</i>	48.39	51.61	0.00	0.00	0.00	0.00
Start of Water Year <i>10-01-2009</i>	97.76	2.24	0.00	0.00	0.00	0.00
One Year Ago <i>07-23-2009</i>	100.00	0.00	0.00	0.00	0.00	0.00

Intensity:



The Drought Monitor focuses on broad-scale conditions. Local conditions may vary. For more information on the Drought Monitor, go to <https://droughtmonitor.unl.edu/About.aspx>

Author:

Anthony Artusa
 NOAA/NWS/NCEP/CPC



droughtmonitor.unl.edu