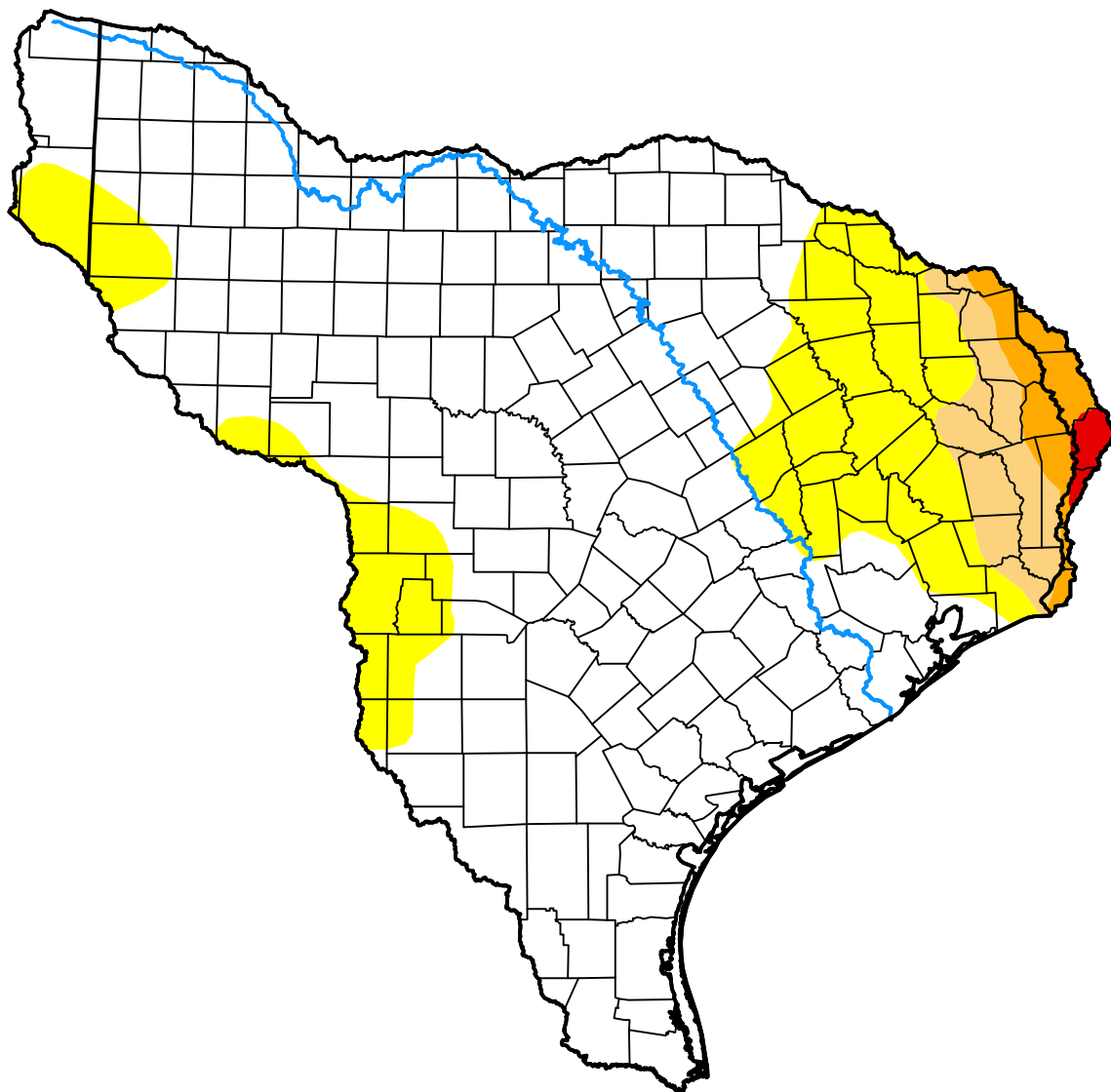


U.S. Drought Monitor Texas-Gulf Watershed

October 12, 2010
(Released Thursday, Oct. 14, 2010)

Valid 8 a.m. EDT



Drought Conditions (Percent Area)

	None	D0-D4	D1-D4	D2-D4	D3-D4	D4
Current	75.86	24.14	6.42	2.67	0.45	0.00
Last Week <i>10-07-2010</i>	80.78	19.22	4.56	2.46	0.37	0.00
3 Months Ago <i>07-15-2010</i>	75.94	24.06	10.13	2.39	0.00	0.00
Start of Calendar Year <i>12-31-2009</i>	77.96	22.04	7.61	2.44	0.00	0.00
Start of Water Year <i>09-30-2010</i>	80.73	19.27	4.56	2.33	0.00	0.00
One Year Ago <i>10-15-2009</i>	58.63	41.37	27.16	18.11	9.14	2.16

Intensity:



The Drought Monitor focuses on broad-scale conditions. Local conditions may vary. For more information on the Drought Monitor, go to <https://droughtmonitor.unl.edu/About.aspx>

Author:

Laura Edwards
Western Regional Climate Center

