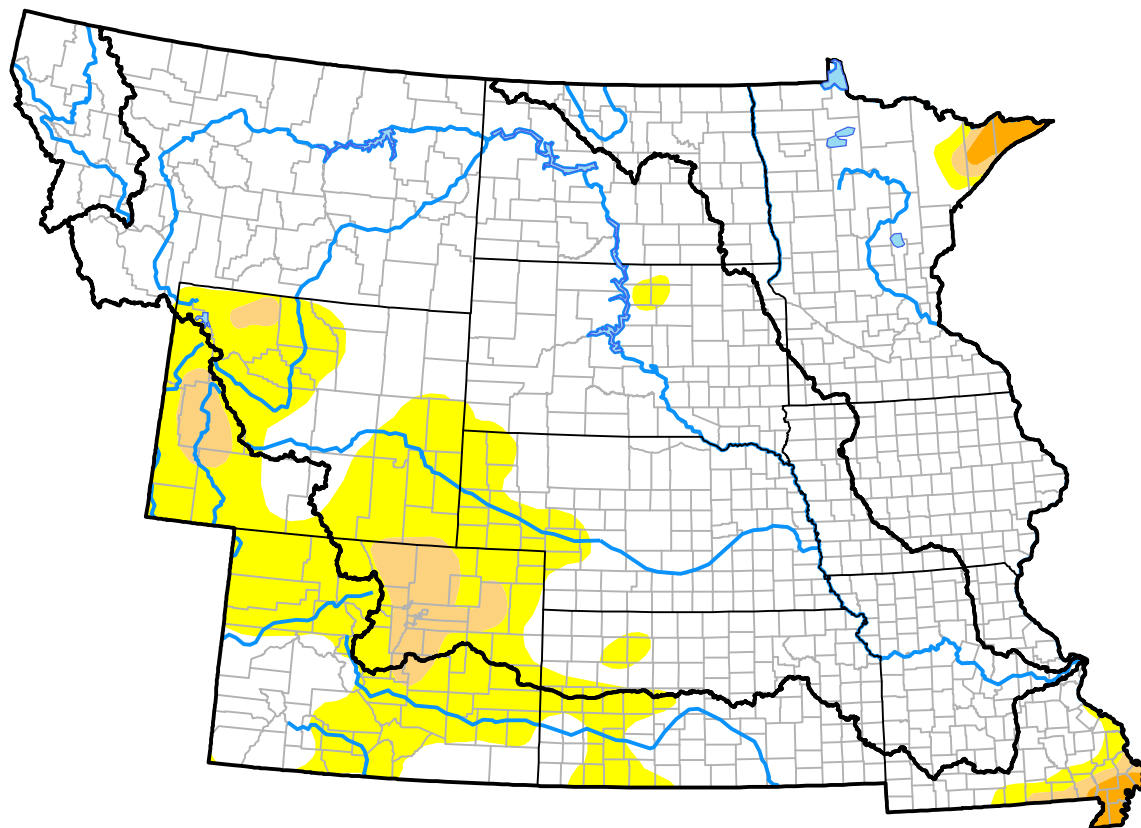


# U.S. Drought Monitor

## Missouri River Basin RDEWS

**October 12, 2010**  
 (Released Thursday, Oct. 14, 2010)  
 Valid 8 a.m. EDT



*Drought Conditions (Percent Area)*

	None	D0-D4	D1-D4	D2-D4	D3-D4	D4
<b>Current</b>	82.12	17.88	3.02	0.00	0.00	0.00
<b>Last Week</b> <i>10-07-2010</i>	80.54	19.46	3.02	0.00	0.00	0.00
<b>3 Months Ago</b> <i>07-15-2010</i>	97.23	2.77	0.30	0.00	0.00	0.00
<b>Start of Calendar Year</b> <i>12-31-2009</i>	87.04	12.96	0.00	0.00	0.00	0.00
<b>Start of Water Year</b> <i>09-30-2010</i>	80.54	19.46	2.41	0.00	0.00	0.00
<b>One Year Ago</b> <i>10-15-2009</i>	88.07	11.93	0.84	0.00	0.00	0.00

***Intensity:***



*The Drought Monitor focuses on broad-scale conditions. Local conditions may vary. For more information on the Drought Monitor, go to <https://droughtmonitor.unl.edu/About.aspx>*

***Author:***

Laura Edwards  
 Western Regional Climate Center

