

U.S. Drought Monitor

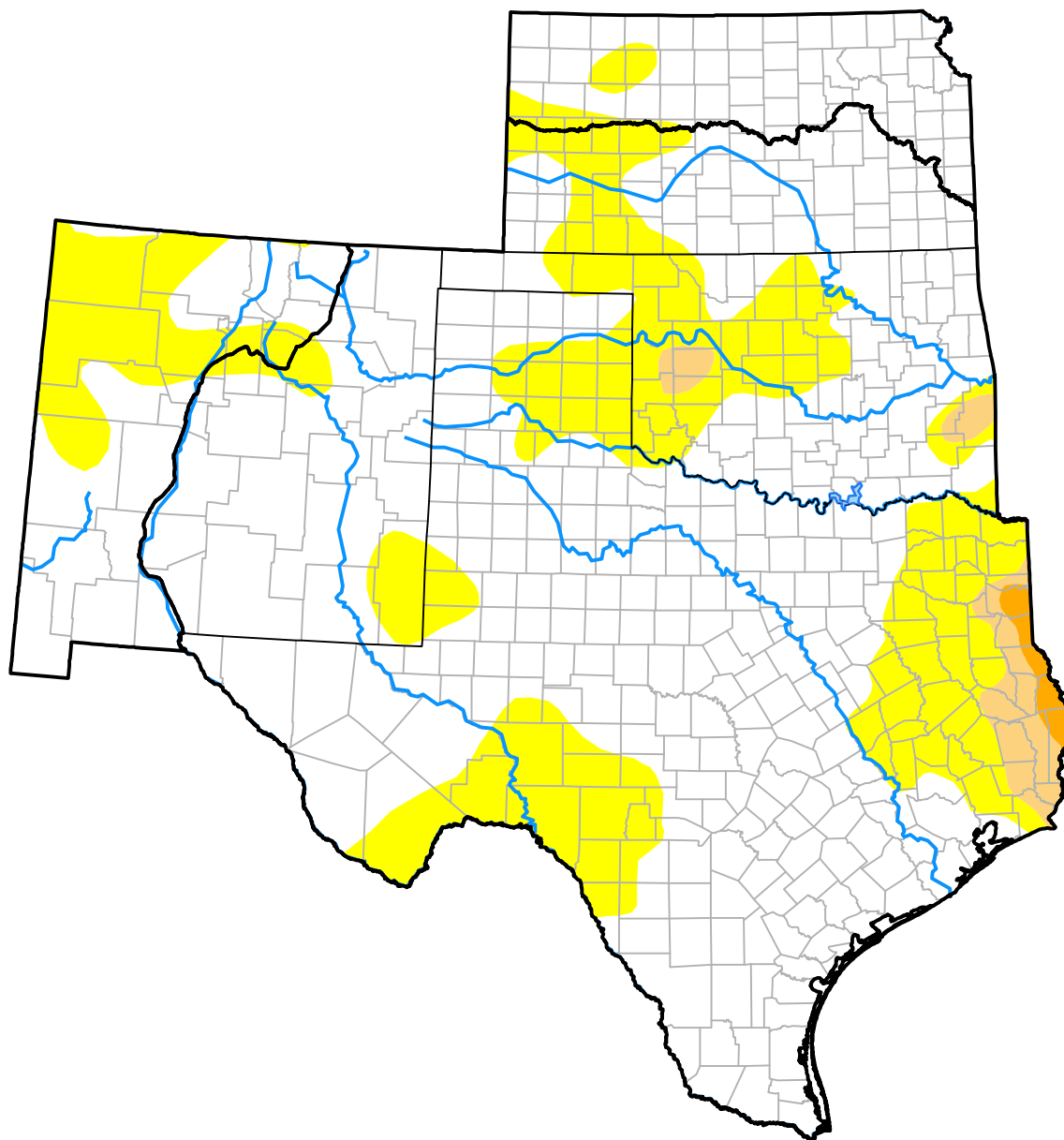
Southern Plains RDEWS

October 12, 2010
(Released Thursday, Oct. 14, 2010)

Valid 8 a.m. EDT

Drought Conditions (Percent Area)

	None	D0	D1	D2	D3	D4
Current	71.56	25.60	2.25	0.59	0.01	0.00
Last Week <i>10-07-2010</i>	74.46	23.48	1.47	0.58	0.01	0.00
3 Months Ago <i>07-15-2010</i>	75.68	14.72	8.62	0.97	0.00	0.00
Start of Calendar Year <i>12-31-2009</i>	72.79	20.46	4.80	1.95	0.00	0.00
Start of Water Year <i>09-30-2010</i>	74.44	23.51	1.48	0.57	0.00	0.00
One Year Ago <i>10-15-2009</i>	74.08	12.38	5.05	4.85	2.77	0.85



Intensity:

- None
- D0 Abnormally Dry
- D1 Moderate Drought
- D2 Severe Drought
- D3 Extreme Drought
- D4 Exceptional Drought

The Drought Monitor focuses on broad-scale conditions. Local conditions may vary. For more information on the Drought Monitor, go to <https://droughtmonitor.unl.edu/About.aspx>

Author:

Laura Edwards
 Western Regional Climate Center

