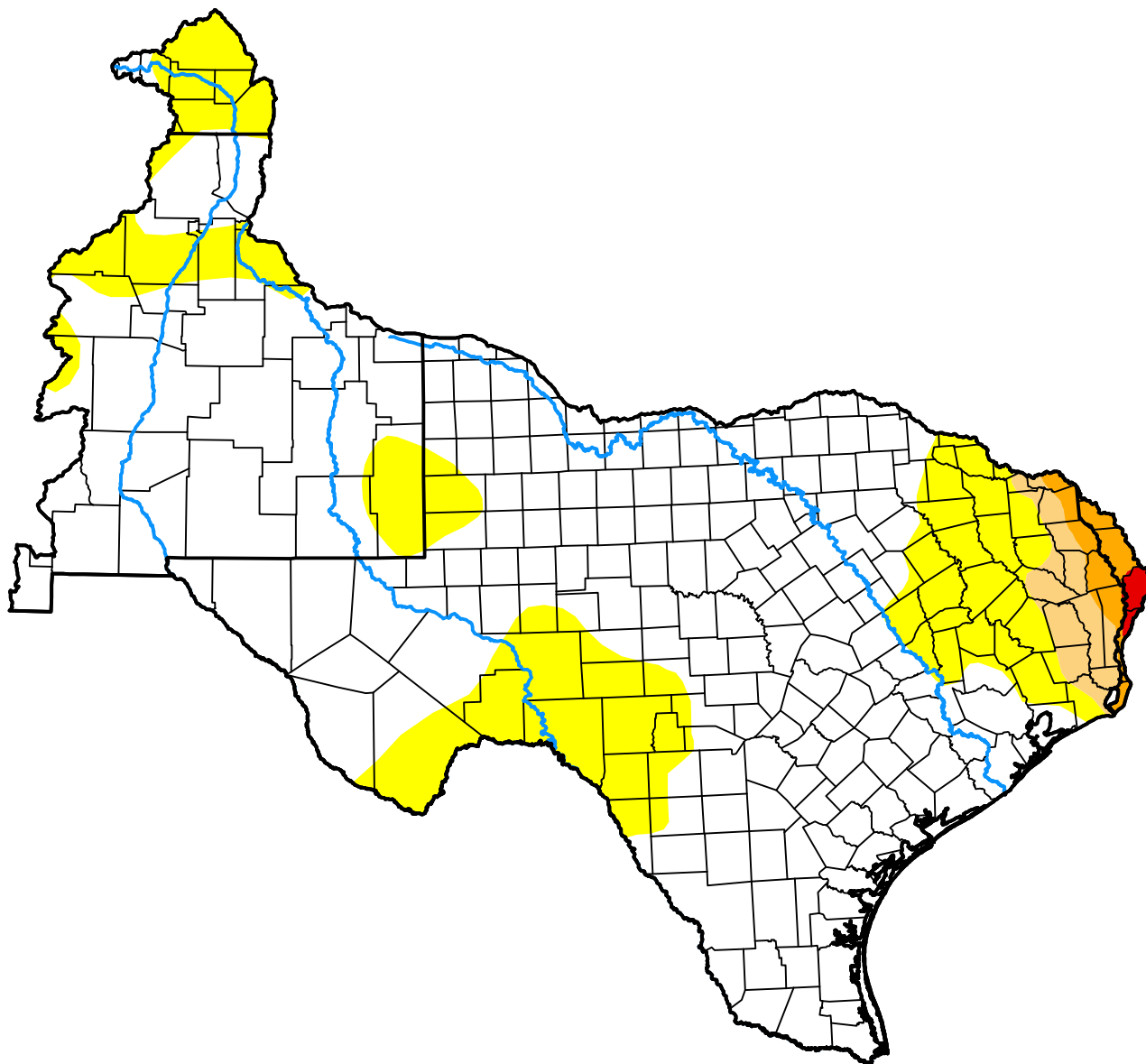
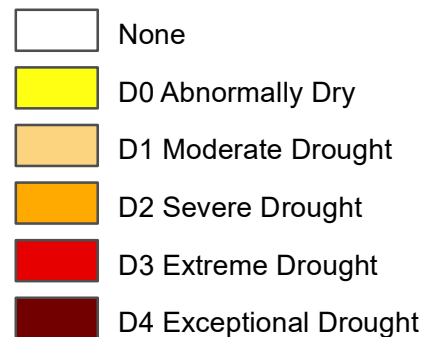


# U.S. Drought Monitor West Gulf RFC

**October 12, 2010**  
(Released Thursday, Oct. 14, 2010)  
Valid 8 a.m. EDT



## Intensity:



*The Drought Monitor focuses on broad-scale conditions. Local conditions may vary. For more information on the Drought Monitor, go to <https://droughtmonitor.unl.edu/About.aspx>*

## Author:

Laura Edwards  
Western Regional Climate Center



[droughtmonitor.unl.edu](https://droughtmonitor.unl.edu)