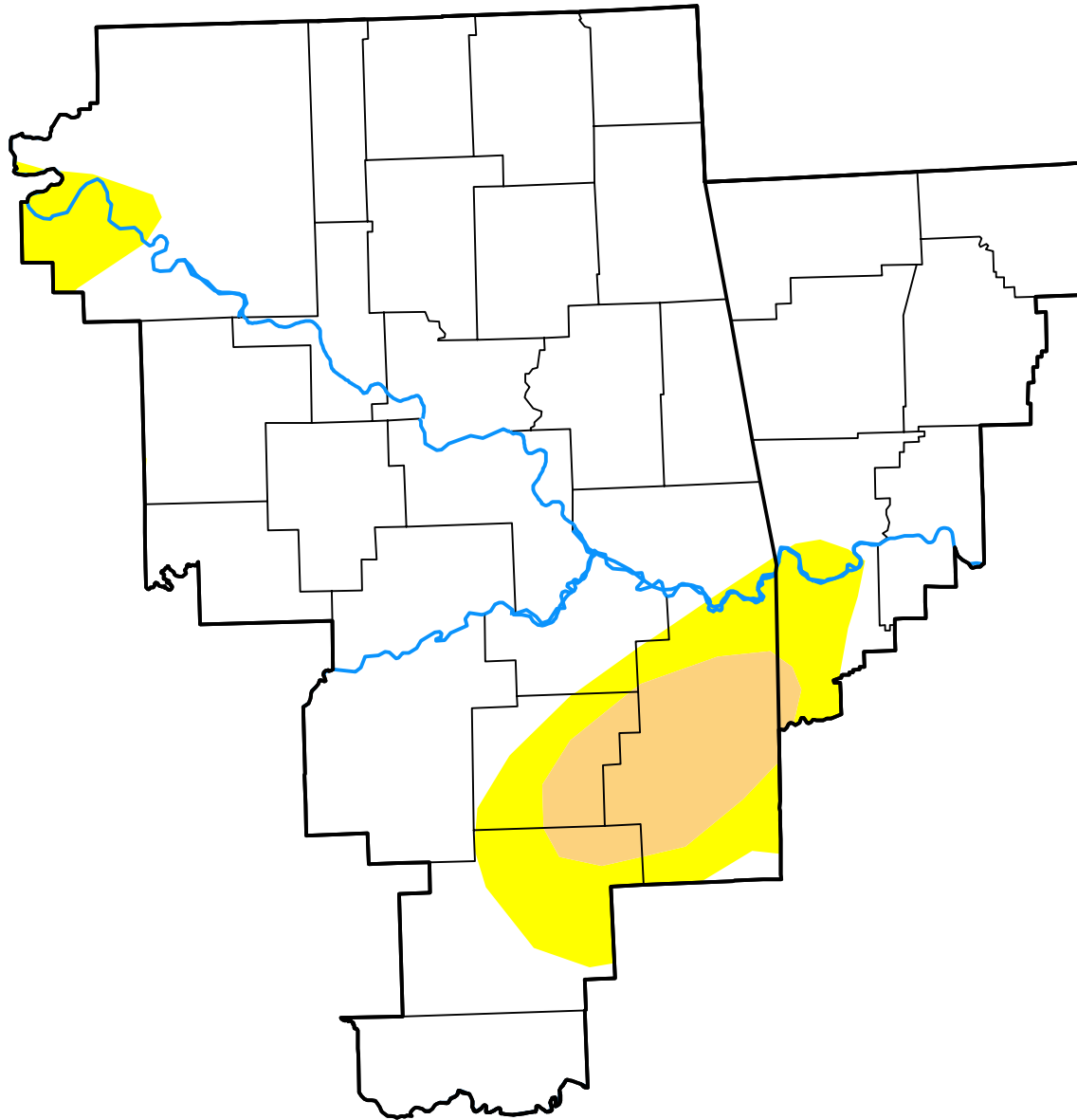


U.S. Drought Monitor Tulsa, OK WFO

October 12, 2010
(Released Thursday, Oct. 14, 2010)
Valid 8 a.m. EDT



Drought Conditions (Percent Area)

	None	D0-D4	D1-D4	D2-D4	D3-D4	D4
Current	85.64	14.36	5.31	0.00	0.00	0.00
Last Week <i>10-07-2010</i>	85.88	14.12	5.31	0.00	0.00	0.00
3 Months Ago <i>07-15-2010</i>	89.61	10.39	7.68	0.00	0.00	0.00
Start of Calendar Year <i>12-31-2009</i>	100.00	0.00	0.00	0.00	0.00	0.00
Start of Water Year <i>09-30-2010</i>	85.88	14.12	5.31	0.00	0.00	0.00
One Year Ago <i>10-15-2009</i>	100.00	0.00	0.00	0.00	0.00	0.00

Intensity:

- None
- D0 Abnormally Dry
- D1 Moderate Drought
- D2 Severe Drought
- D3 Extreme Drought
- D4 Exceptional Drought

The Drought Monitor focuses on broad-scale conditions. Local conditions may vary. For more information on the Drought Monitor, go to <https://droughtmonitor.unl.edu/About.aspx>

Author:

Laura Edwards
Western Regional Climate Center

