

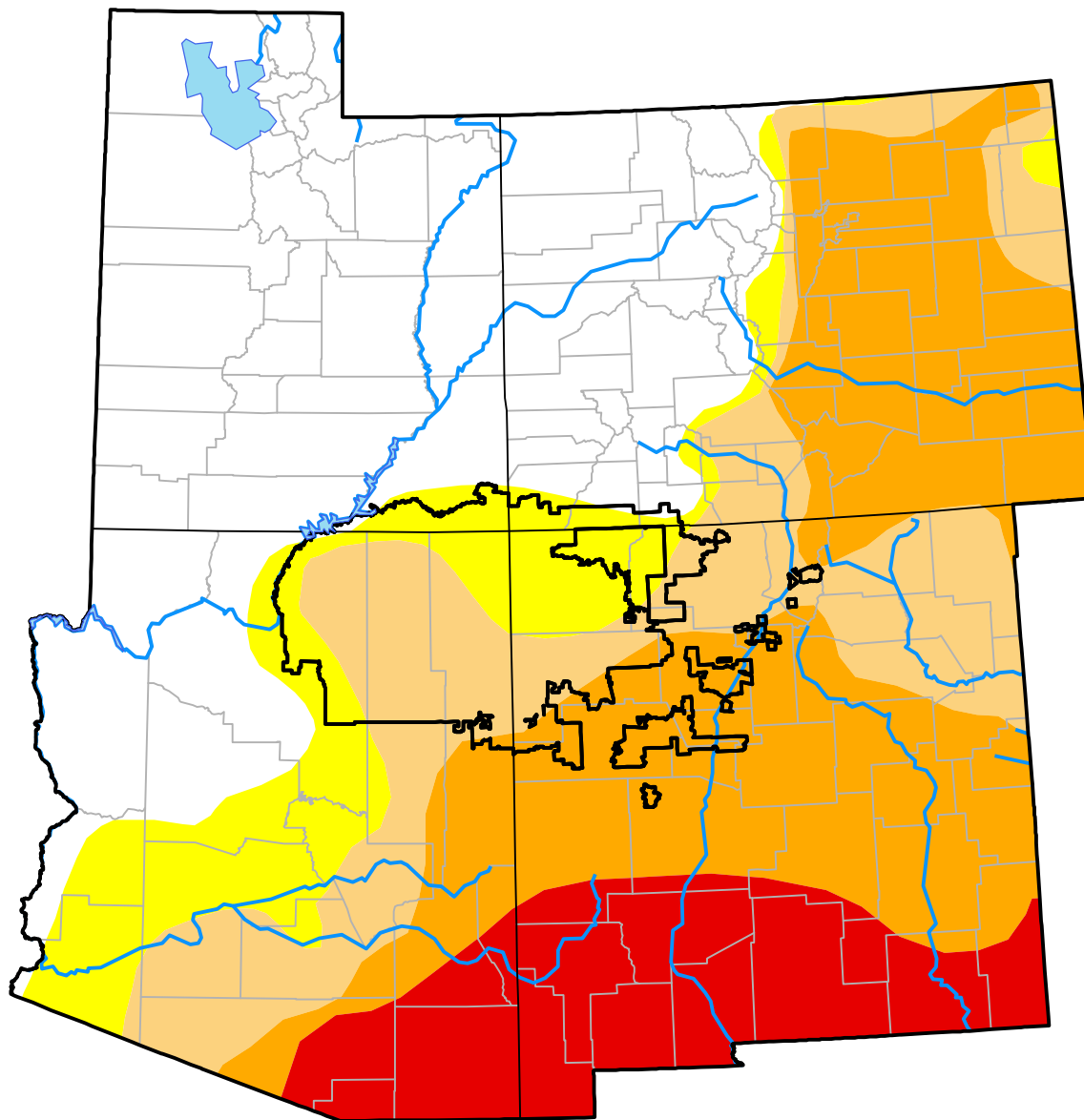
# Corners RDEWS and Surrounding Areas

(Released Thursday, Apr. 7, 2011)

valid 8 a.m. EDT

Drought Conditions (Percent Area)

	None	D0-D4	D1-D4	D2-D4	D3-D4	D4
<b>Current</b>	36.11	63.89	53.57	37.40	11.62	0.00
<b>Last Week</b> <i>03-31-2011</i>	37.45	62.55	51.85	36.66	5.93	0.00
<b>3 Months Ago</b> <i>01-06-2011</i>	41.84	58.16	32.43	2.48	0.00	0.00
<b>Start of Calendar Year</b> <i>01-06-2011</i>	41.84	58.16	32.43	2.48	0.00	0.00
<b>Start of Water Year</b> <i>09-30-2010</i>	51.85	48.15	8.34	0.87	0.00	0.00
<b>One Year Ago</b> <i>04-08-2010</i>	59.34	40.66	5.39	0.72	0.00	0.00



**Intensity:**

- None
- D0 Abnormally Dry
- D1 Moderate Drought
- D2 Severe Drought
- D3 Extreme Drought
- D4 Exceptional Drought

The Drought Monitor focuses on broad-scale conditions. Local conditions may vary. For more information on the Drought Monitor, go to <https://droughtmonitor.unl.edu/About.aspx>

**Author:**

Mark Svoboda  
National Drought Mitigation Center

