

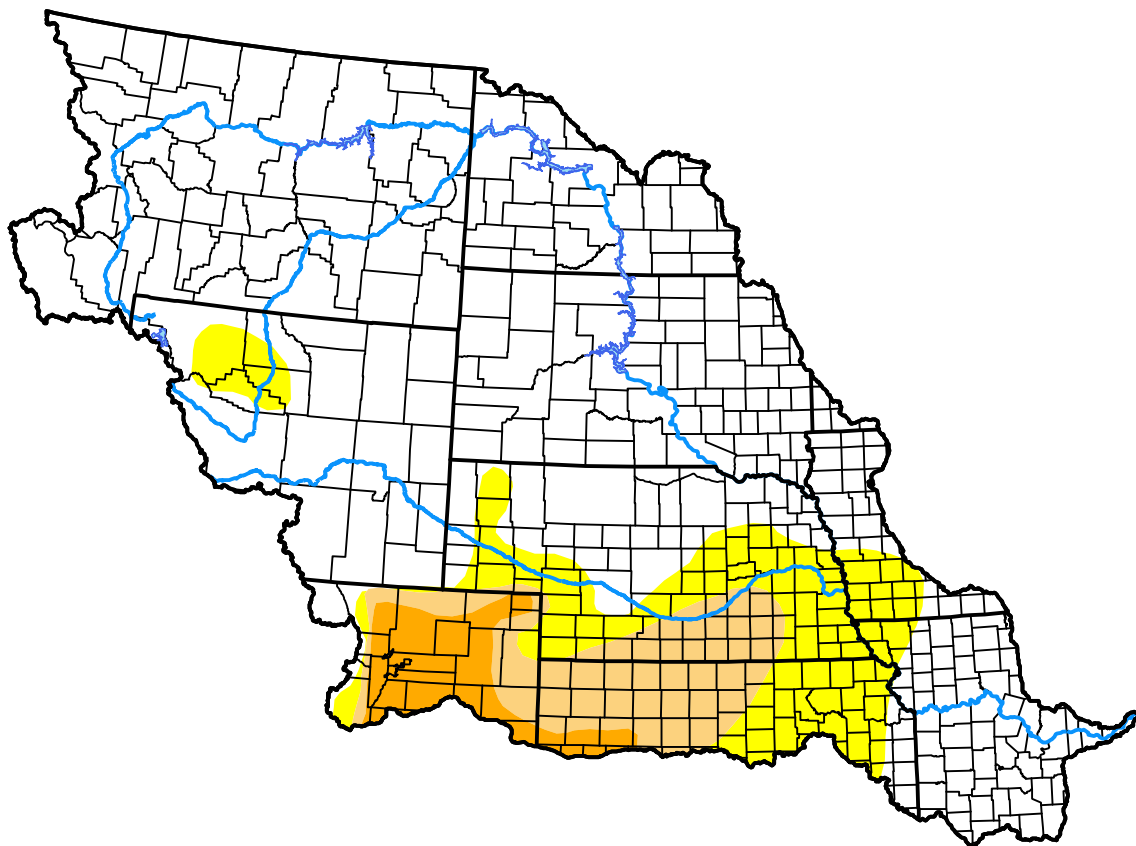
U.S. Drought Monitor

Missouri Basin RFC

April 5, 2011
 (Released Thursday, Apr. 7, 2011)
 Valid 8 a.m. EDT

Drought Conditions (Percent Area)

	None	D0-D4	D1-D4	D2-D4	D3-D4	D4
Current	76.62	23.38	11.15	3.67	0.00	0.00
Last Week <i>03-31-2011</i>	77.57	22.43	8.67	3.30	0.00	0.00
3 Months Ago <i>01-06-2011</i>	74.64	25.36	7.96	0.15	0.00	0.00
Start of Calendar Year <i>01-06-2011</i>	74.64	25.36	7.96	0.15	0.00	0.00
Start of Water Year <i>09-30-2010</i>	80.55	19.45	2.41	0.00	0.00	0.00
One Year Ago <i>04-08-2010</i>	78.97	21.03	7.96	0.90	0.00	0.00



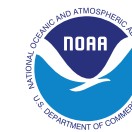
Intensity:



The Drought Monitor focuses on broad-scale conditions. Local conditions may vary. For more information on the Drought Monitor, go to <https://droughtmonitor.unl.edu/About.aspx>

Author:

Mark Svoboda
 National Drought Mitigation Center



droughtmonitor.unl.edu