

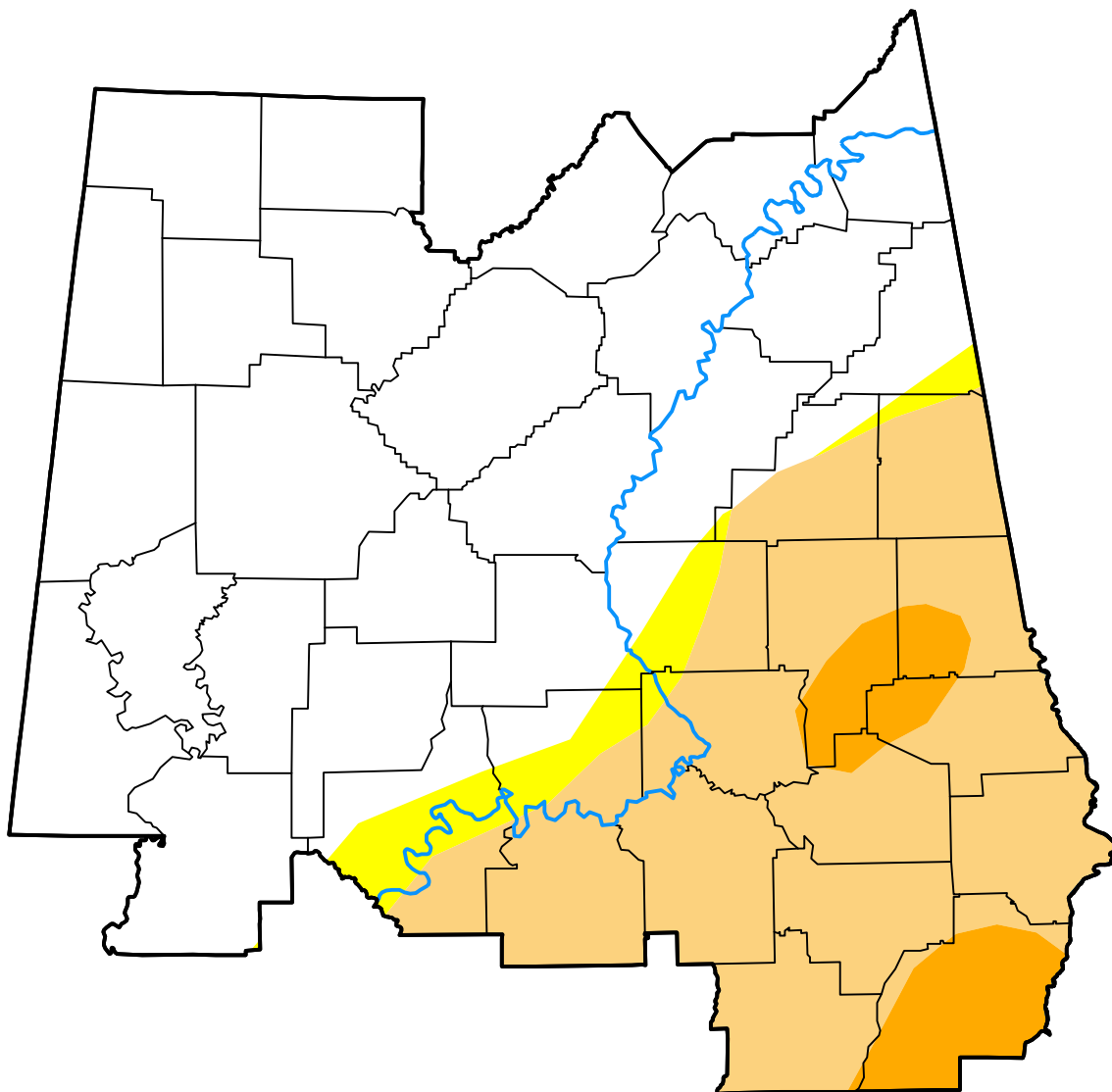
U.S. Drought Monitor

Birmingham, AL WFO

April 5, 2011
 (Released Thursday, Apr. 7, 2011)
 Valid 8 a.m. EDT

Drought Conditions (Percent Area)

	None	D0	D1	D2	D3	D4
Current	63.55	3.82	27.69	4.93	0.00	0.00
Last Week <i>03-31-2011</i>	55.62	12.52	13.16	15.95	2.75	0.00
3 Months Ago <i>01-06-2011</i>	35.28	22.05	23.06	16.30	3.32	0.00
Start of Calendar Year <i>01-06-2011</i>	35.28	22.05	23.06	16.30	3.32	0.00
Start of Water Year <i>09-30-2010</i>	4.48	24.38	48.97	14.15	8.01	0.00
One Year Ago <i>04-08-2010</i>	79.83	20.17	0.00	0.00	0.00	0.00



Intensity:

- None
- D0 Abnormally Dry
- D1 Moderate Drought
- D2 Severe Drought
- D3 Extreme Drought
- D4 Exceptional Drought

The Drought Monitor focuses on broad-scale conditions. Local conditions may vary. For more information on the Drought Monitor, go to <https://droughtmonitor.unl.edu/About.aspx>

Author:

Mark Svoboda
 National Drought Mitigation Center

