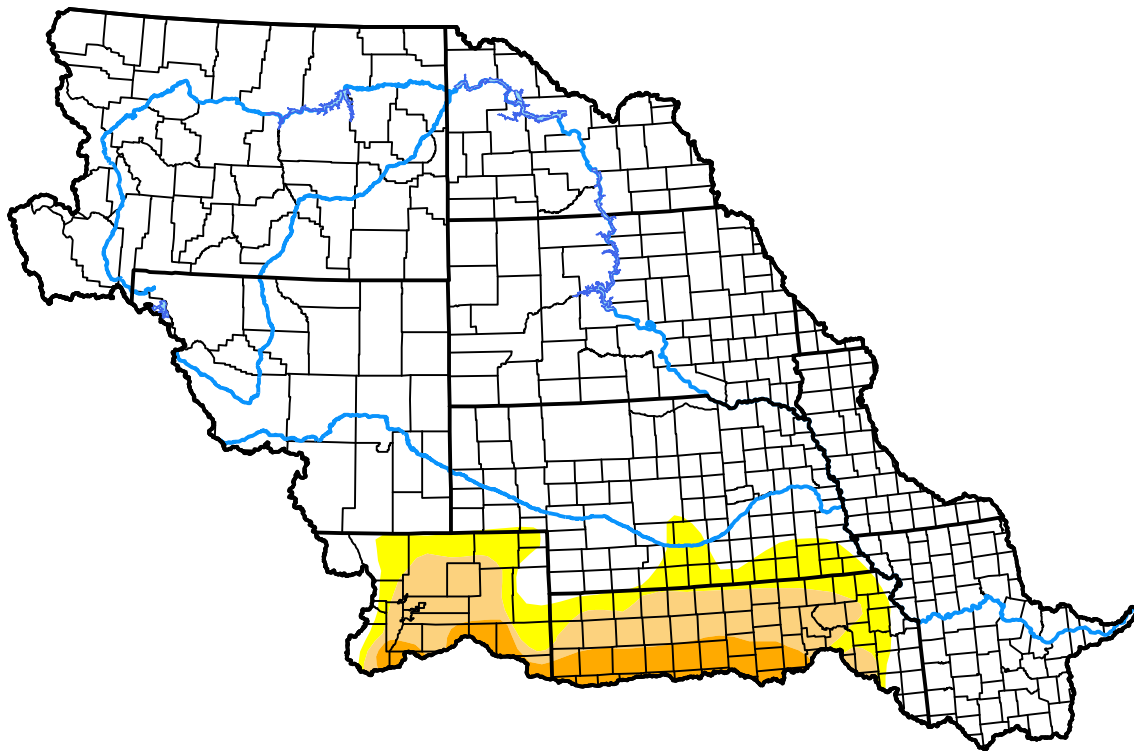


U.S. Drought Monitor

Missouri Watershed

May 17, 2011
 (Released Thursday, May. 19, 2011)
 Valid 8 a.m. EDT



Drought Conditions (Percent Area)

	None	D0-D4	D1-D4	D2-D4	D3-D4	D4
Current	86.46	13.54	8.30	2.61	0.00	0.00
Last Week <i>05-12-2011</i>	81.33	18.67	9.85	3.24	0.00	0.00
3 Months Ago <i>02-17-2011</i>	75.03	24.97	8.48	0.15	0.00	0.00
Start of Calendar Year <i>01-06-2011</i>	74.62	25.38	7.97	0.15	0.00	0.00
Start of Water Year <i>09-30-2010</i>	80.53	19.47	2.42	0.00	0.00	0.00
One Year Ago <i>05-20-2010</i>	88.57	11.43	4.63	1.20	0.00	0.00

Intensity:

- None
- D0 Abnormally Dry
- D1 Moderate Drought
- D2 Severe Drought
- D3 Extreme Drought
- D4 Exceptional Drought

The Drought Monitor focuses on broad-scale conditions. Local conditions may vary. For more information on the Drought Monitor, go to <https://droughtmonitor.unl.edu/About.aspx>

Author:

David Miskus
 NOAA/NWS/NCEP/CPC

