

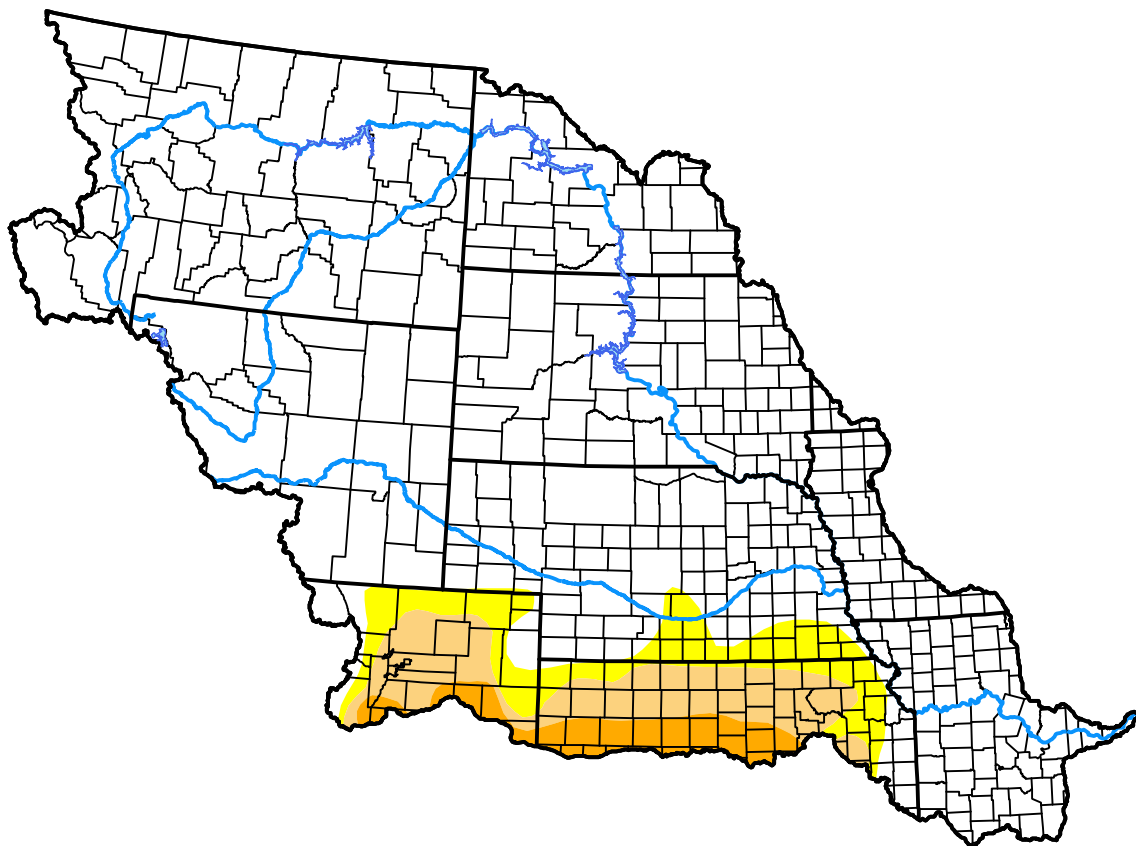
# U.S. Drought Monitor

## Missouri Basin RFC

**May 17, 2011**  
 (Released Thursday, May. 19, 2011)  
 Valid 8 a.m. EDT

### Drought Conditions (Percent Area)

	None	D0-D4	D1-D4	D2-D4	D3-D4	D4
<b>Current</b>	86.48	13.52	8.29	2.62	0.00	0.00
<b>Last Week</b> <i>05-12-2011</i>	81.35	18.65	9.84	3.25	0.00	0.00
<b>3 Months Ago</b> <i>02-17-2011</i>	75.05	24.95	8.47	0.15	0.00	0.00
<b>Start of Calendar Year</b> <i>01-06-2011</i>	74.64	25.36	7.96	0.15	0.00	0.00
<b>Start of Water Year</b> <i>09-30-2010</i>	80.55	19.45	2.41	0.00	0.00	0.00
<b>One Year Ago</b> <i>05-20-2010</i>	88.42	11.58	4.78	1.21	0.00	0.00



### Intensity:



The Drought Monitor focuses on broad-scale conditions. Local conditions may vary. For more information on the Drought Monitor, go to <https://droughtmonitor.unl.edu/About.aspx>

### Author:

David Miskus  
 NOAA/NWS/NCEP/CPC

