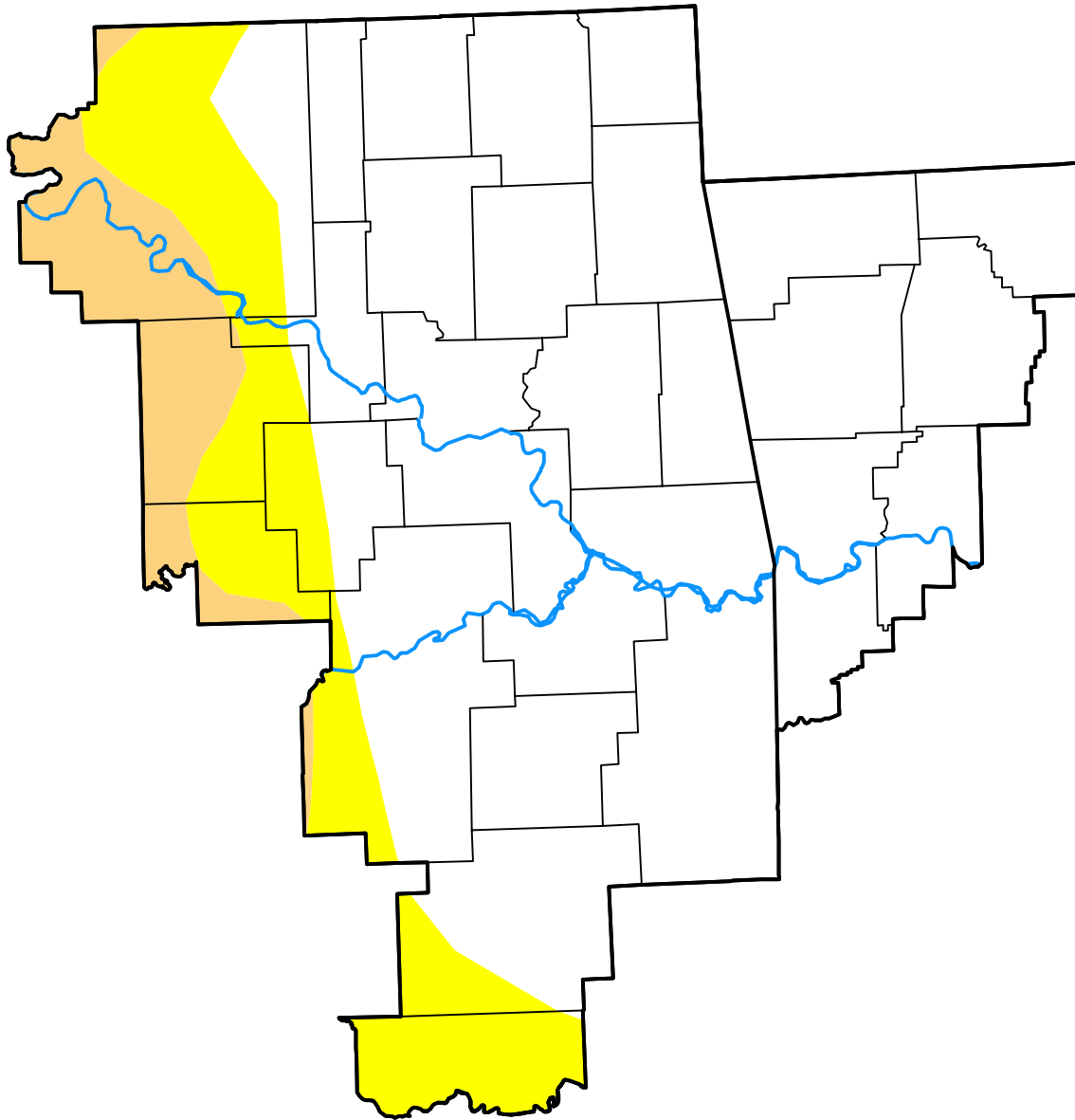


U.S. Drought Monitor Tulsa, OK WFO

May 17, 2011
(Released Thursday, May. 19, 2011)
Valid 8 a.m. EDT



Drought Conditions (Percent Area)

	None	D0	D1	D2	D3	D4
Current	77.64	15.14	7.22	0.00	0.00	0.00
Last Week <i>05-12-2011</i>	74.22	17.23	8.18	0.38	0.00	0.00
3 Months Ago <i>02-17-2011</i>	0.00	50.78	47.90	1.33	0.00	0.00
Start of Calendar Year <i>01-06-2011</i>	0.00	84.27	14.22	1.51	0.00	0.00
Start of Water Year <i>09-30-2010</i>	85.88	8.81	5.31	0.00	0.00	0.00
One Year Ago <i>05-20-2010</i>	100.00	0.00	0.00	0.00	0.00	0.00

Intensity:

- None
- D0 Abnormally Dry
- D1 Moderate Drought
- D2 Severe Drought
- D3 Extreme Drought
- D4 Exceptional Drought

The Drought Monitor focuses on broad-scale conditions. Local conditions may vary. For more information on the Drought Monitor, go to <https://droughtmonitor.unl.edu/About.aspx>

Author:

David Miskus
NOAA/NWS/NCEP/CPC

