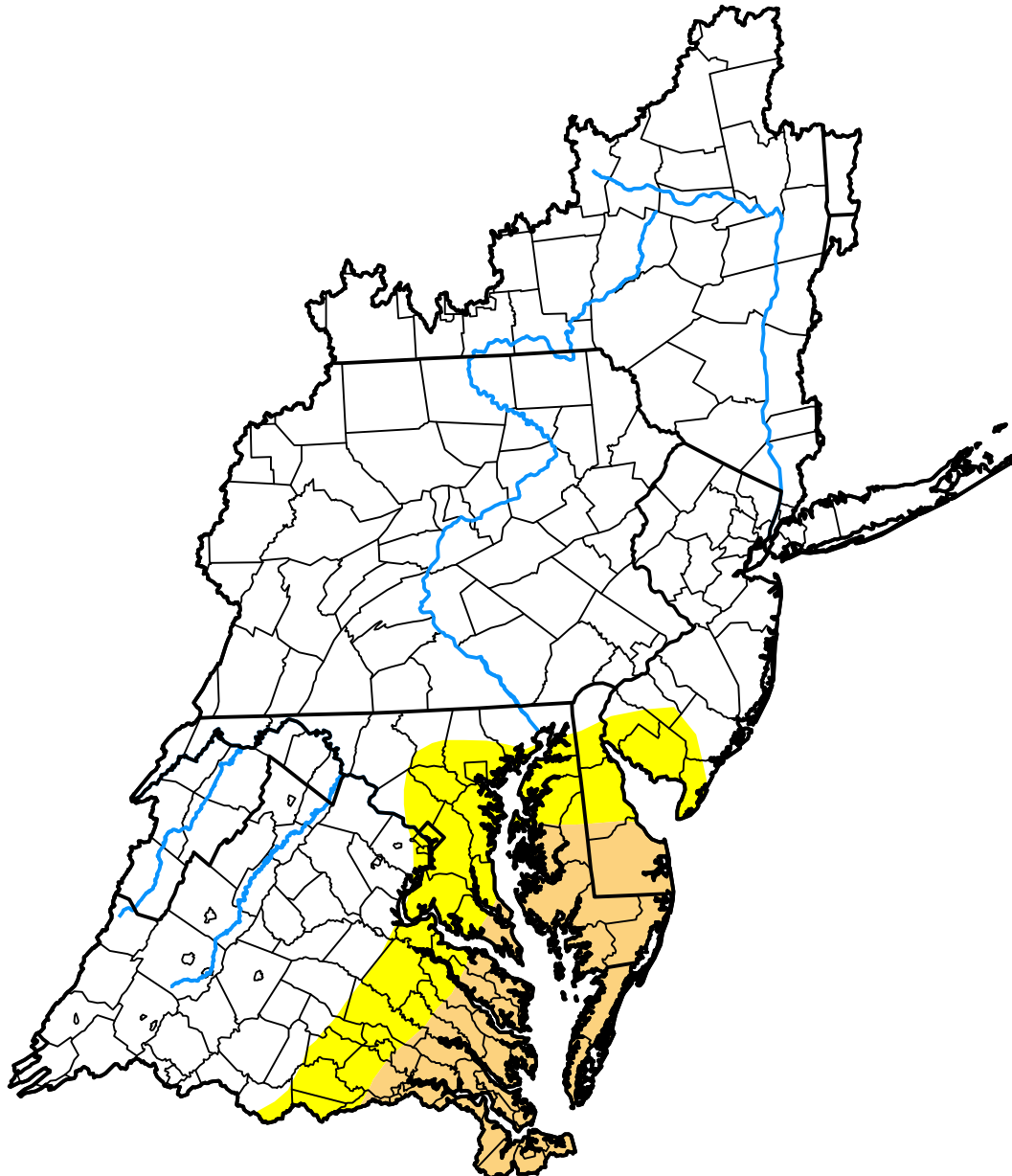


# U.S. Drought Monitor

## Mid Atlantic Watershed

**June 14, 2011**  
 (Released Thursday, Jun. 16, 2011)  
 Valid 8 a.m. EDT



*Drought Conditions (Percent Area)*

	None	D0	D1	D2	D3	D4
<b>Current</b>	82.71	9.37	7.91	0.00	0.00	0.00
<b>Last Week</b> <i>06-09-2011</i>	87.22	6.67	6.11	0.00	0.00	0.00
<b>3 Months Ago</b> <i>03-17-2011</i>	76.90	16.78	6.32	0.00	0.00	0.00
<b>Start of Calendar Year</b> <i>01-06-2011</i>	92.73	7.27	0.00	0.00	0.00	0.00
<b>Start of Water Year</b> <i>09-30-2010</i>	17.94	46.75	17.78	15.09	2.45	0.00
<b>One Year Ago</b> <i>06-17-2010</i>	83.81	16.19	0.00	0.00	0.00	0.00

*Intensity:*

- None
- D0 Abnormally Dry
- D1 Moderate Drought
- D2 Severe Drought
- D3 Extreme Drought
- D4 Exceptional Drought

*The Drought Monitor focuses on broad-scale conditions. Local conditions may vary. For more information on the Drought Monitor, go to <https://droughtmonitor.unl.edu/About.aspx>*

*Author:*

Brian Fuchs  
 National Drought Mitigation Center

