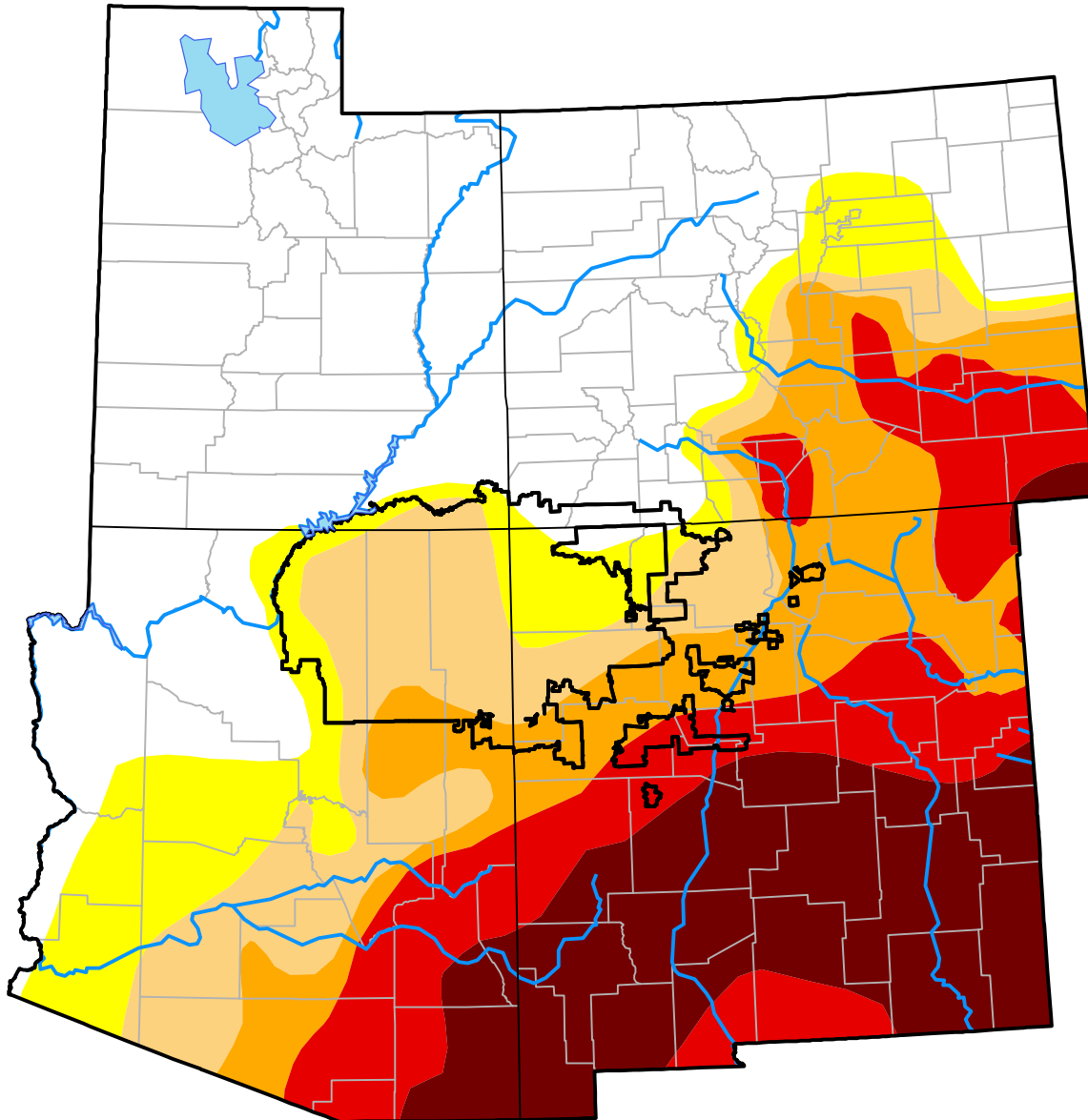








# Southwest Corners RDEWS and Surrounding Areas

(Released Thursday, Jun. 16, 2011)  
Valid 8 a.m. EDT



***Intensity:***

-  None
-  D0 Abnormally Dry
-  D1 Moderate Drought
-  D2 Severe Drought
-  D3 Extreme Drought
-  D4 Exceptional Drought

*The Drought Monitor focuses on broad-scale conditions. Local conditions may vary. For more information on the Drought Monitor, go to <https://droughtmonitor.unl.edu/About.aspx>*

***Author:***

Brian Fuchs  
National Drought Mitigation Center

