

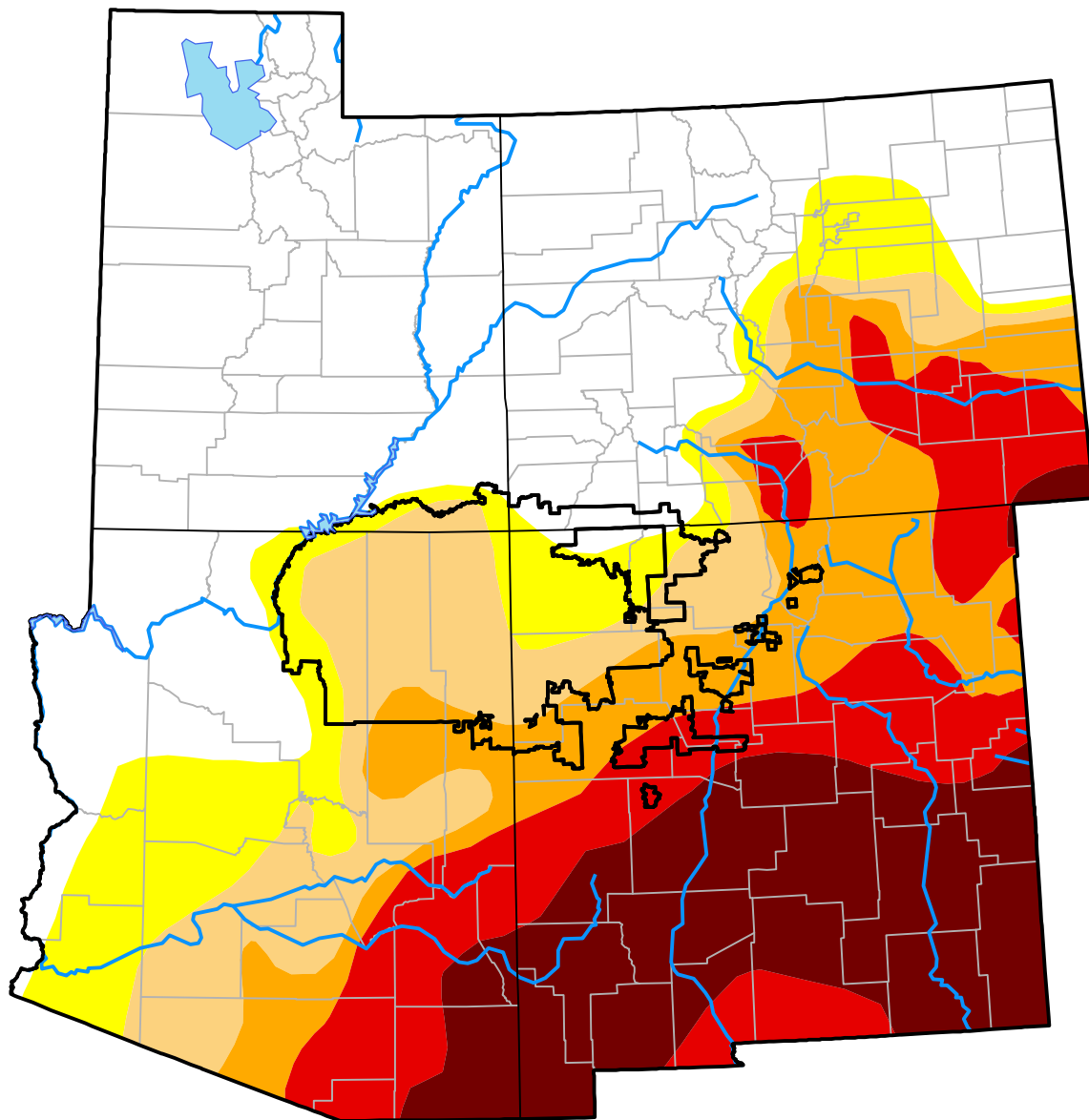
Southwest Corners RDEWS and Surrounding Areas

(Released Thursday, Jun. 16, 2011)

Valid 8 a.m. EDT

Drought Conditions (Percent Area)

	None	D0-D4	D1-D4	D2-D4	D3-D4	D4
Current	40.02	59.98	50.10	39.21	27.53	14.59
Last Week <i>06-09-2011</i>	40.23	59.77	50.10	38.89	26.73	13.23
3 Months Ago <i>03-17-2011</i>	39.51	60.49	47.66	21.73	4.25	0.00
Start of Calendar Year <i>01-06-2011</i>	41.84	58.16	32.43	2.48	0.00	0.00
Start of Water Year <i>09-30-2010</i>	51.85	48.15	8.34	0.87	0.00	0.00
One Year Ago <i>06-17-2010</i>	66.09	33.91	9.08	0.71	0.00	0.00



Intensity:

- None
- D0 Abnormally Dry
- D1 Moderate Drought
- D2 Severe Drought
- D3 Extreme Drought
- D4 Exceptional Drought

The Drought Monitor focuses on broad-scale conditions. Local conditions may vary. For more information on the Drought Monitor, go to <https://droughtmonitor.unl.edu/About.aspx>

Author:

Brian Fuchs
National Drought Mitigation Center

