

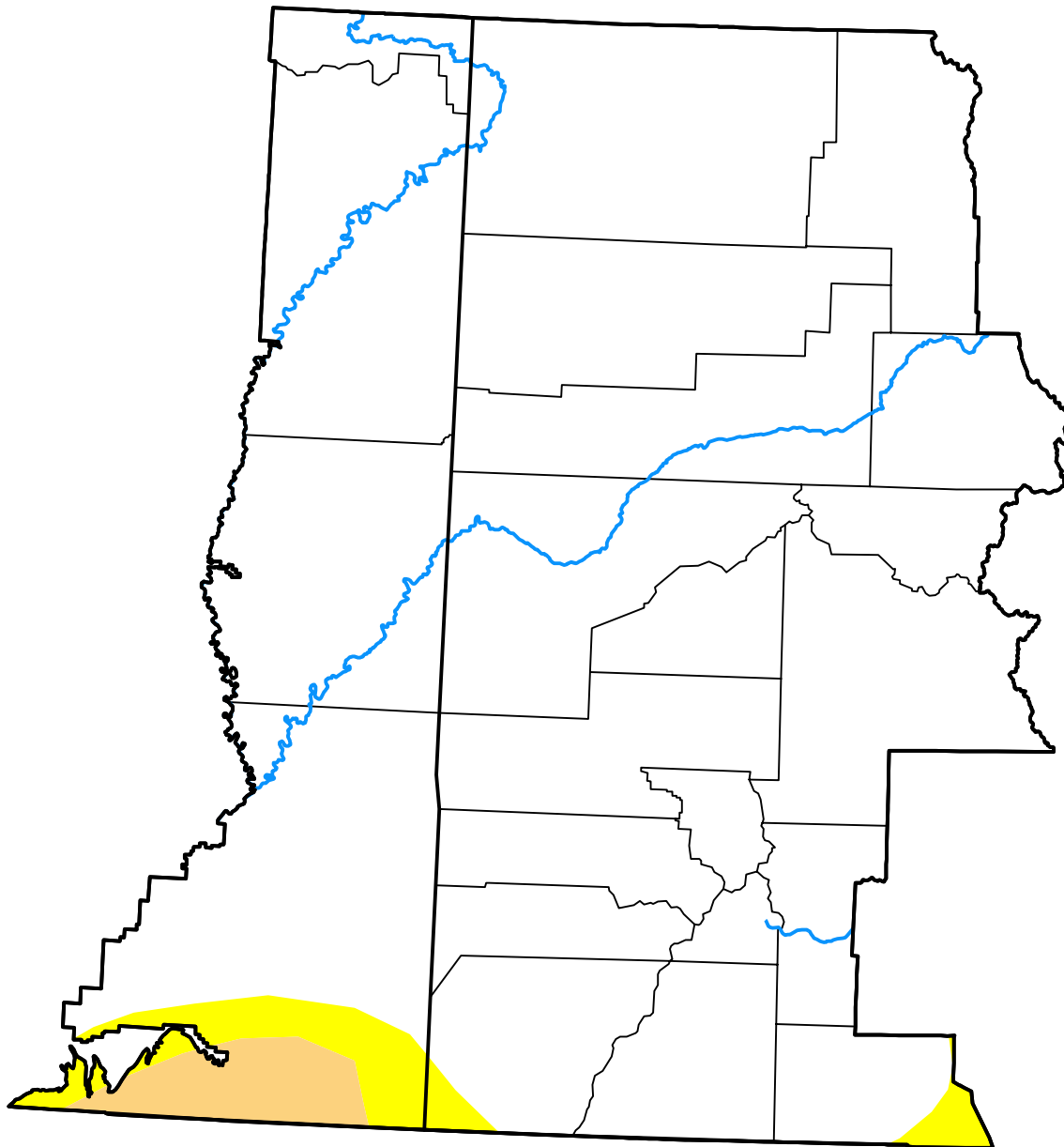
U.S. Drought Monitor

Grand Junction, CO WFO

June 14, 2011
 (Released Thursday, Jun. 16, 2011)
 Valid 8 a.m. EDT

Drought Conditions (Percent Area)

	None	D0-D4	D1-D4	D2-D4	D3-D4	D4
Current	94.90	5.10	2.14	0.00	0.00	0.00
Last Week <i>06-09-2011</i>	94.90	5.10	2.14	0.00	0.00	0.00
3 Months Ago <i>03-17-2011</i>	96.04	3.96	0.00	0.00	0.00	0.00
Start of Calendar Year <i>01-06-2011</i>	99.32	0.68	0.00	0.00	0.00	0.00
Start of Water Year <i>09-30-2010</i>	57.64	42.36	0.02	0.00	0.00	0.00
One Year Ago <i>06-17-2010</i>	63.22	36.78	0.04	0.00	0.00	0.00



Intensity:



The Drought Monitor focuses on broad-scale conditions. Local conditions may vary. For more information on the Drought Monitor, go to <https://droughtmonitor.unl.edu/About.aspx>

Author:

Brian Fuchs
 National Drought Mitigation Center



droughtmonitor.unl.edu