

U.S. Drought Monitor

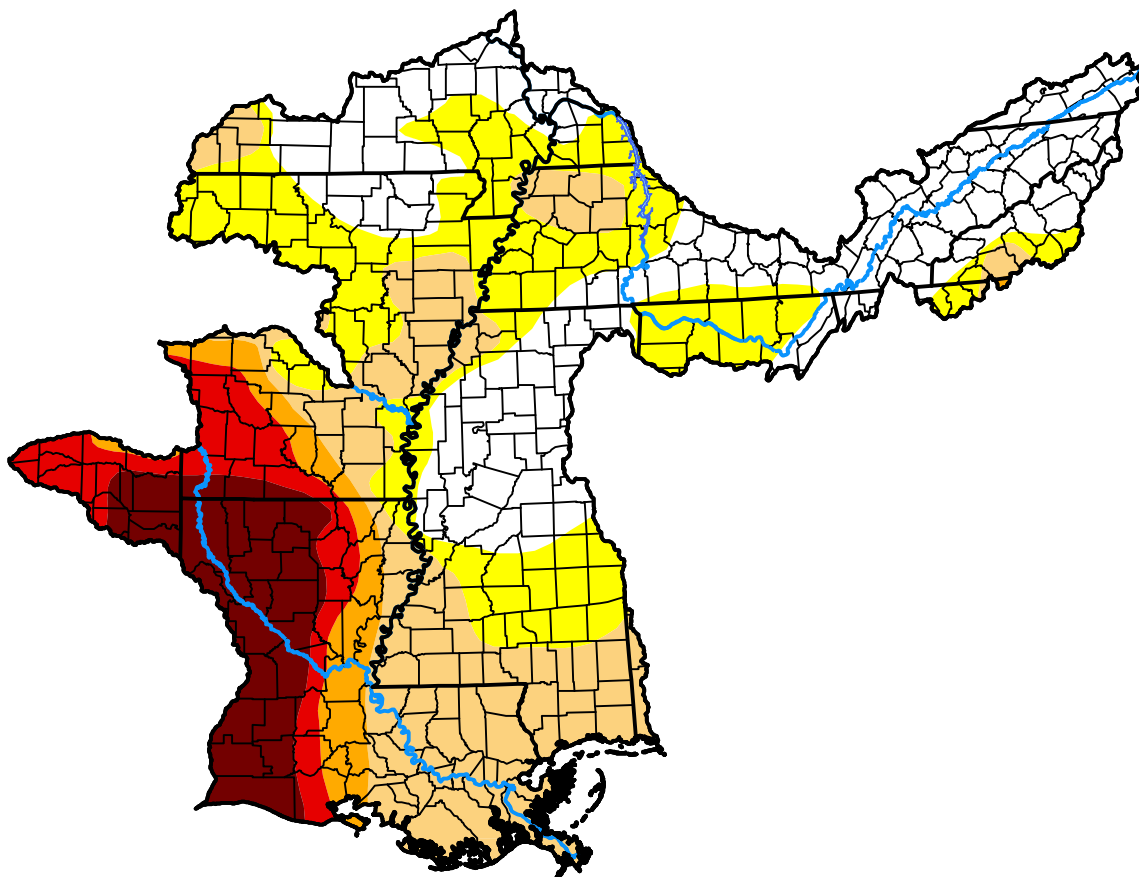
Lower Mississippi RFC

November 15, 2011
 (Released Thursday, Nov. 17, 2011)

Valid 7 a.m. EST

Drought Conditions (Percent Area)

| | None | D0-D4 | D1-D4 | D2-D4 | D3-D4 | D4 |
|--|-------|-------|-------|-------|-------|-------|
| Current | 30.05 | 69.95 | 44.49 | 21.62 | 16.76 | 10.12 |
| Last Week <i>11-10-2011</i> | 29.38 | 70.62 | 47.74 | 21.45 | 16.73 | 10.10 |
| 3 Months Ago <i>08-18-2011</i> | 20.77 | 79.23 | 47.89 | 29.88 | 17.58 | 7.84 |
| Start of Calendar Year <i>01-06-2011</i> | 14.74 | 85.26 | 62.21 | 34.98 | 12.44 | 0.00 |
| Start of Water Year <i>09-29-2011</i> | 52.83 | 47.17 | 29.72 | 18.90 | 11.86 | 5.43 |
| One Year Ago <i>11-18-2010</i> | 19.22 | 80.78 | 63.46 | 39.09 | 11.72 | 0.00 |



Intensity:



The Drought Monitor focuses on broad-scale conditions. Local conditions may vary. For more information on the Drought Monitor, go to <https://droughtmonitor.unl.edu/About.aspx>

Author:

Anthony Artusa
 NOAA/NWS/NCEP/CPC

