

U.S. Drought Monitor

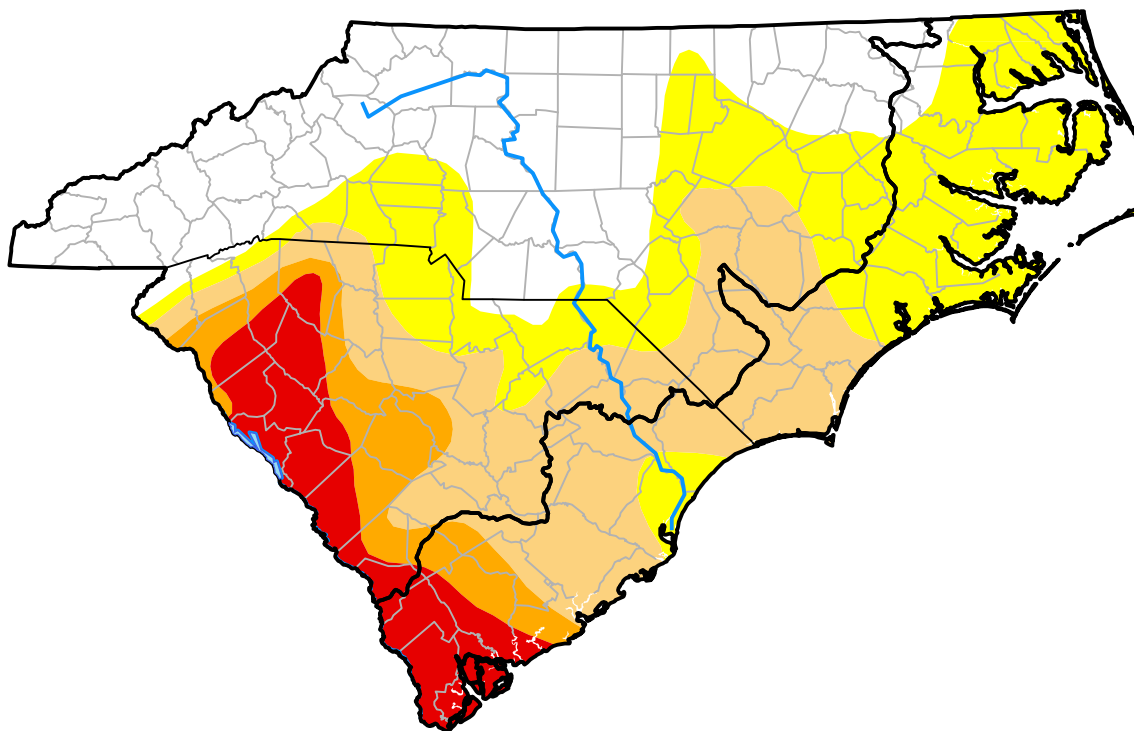
Coastal Carolinas RDEWS

December 20, 2011
 (Released Thursday, Dec. 22, 2011)

Valid 7 a.m. EST

Drought Conditions (Percent Area)

	None	D0	D1	D2	D3	D4
Current	2.81	48.67	29.90	6.97	11.65	0.00
Last Week <i>12-15-2011</i>	2.81	55.11	23.46	6.97	11.65	0.00
3 Months Ago <i>09-22-2011</i>	46.64	15.69	20.65	6.00	11.01	0.00
Start of Calendar Year <i>01-06-2011</i>	57.54	37.69	4.77	0.00	0.00	0.00
Start of Water Year <i>09-29-2011</i>	47.97	14.36	20.65	6.00	11.01	0.00
One Year Ago <i>12-23-2010</i>	43.81	51.75	3.83	0.62	0.00	0.00



Intensity:



The Drought Monitor focuses on broad-scale conditions. Local conditions may vary. For more information on the Drought Monitor, go to <https://droughtmonitor.unl.edu/About.aspx>

Author:

Matthew Rosencrans
 CPC/NCEP/NWS/NOAA



droughtmonitor.unl.edu