

U.S. Drought Monitor

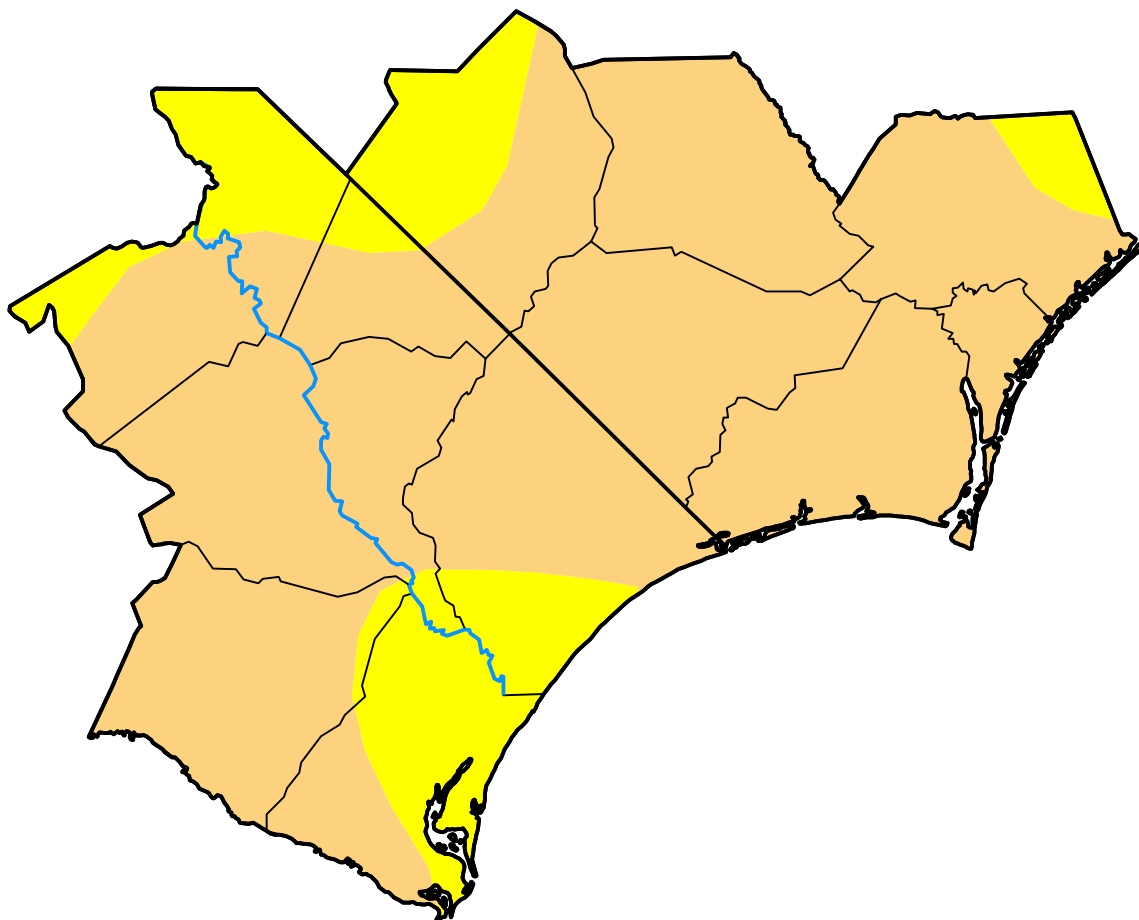
Wilmington, NC WFO

December 20, 2011
(Released Thursday, Dec. 22, 2011)

Valid 7 a.m. EST

Drought Conditions (Percent Area)

	None	D0-D4	D1-D4	D2-D4	D3-D4	D4
Current	0.00	100.00	80.03	0.00	0.00	0.00
Last Week <i>12-15-2011</i>	0.00	100.00	61.86	0.00	0.00	0.00
3 Months Ago <i>09-22-2011</i>	1.60	98.40	59.65	0.00	0.00	0.00
Start of Calendar Year <i>01-06-2011</i>	27.04	72.96	0.55	0.00	0.00	0.00
Start of Water Year <i>09-29-2011</i>	3.71	96.29	48.90	0.00	0.00	0.00
One Year Ago <i>12-23-2010</i>	1.09	98.91	0.33	0.00	0.00	0.00



Intensity:

- None
- D0 Abnormally Dry
- D1 Moderate Drought
- D2 Severe Drought
- D3 Extreme Drought
- D4 Exceptional Drought

The Drought Monitor focuses on broad-scale conditions. Local conditions may vary. For more information on the Drought Monitor, go to <https://droughtmonitor.unl.edu/About.aspx>

Author:

Matthew Rosencrans
 CPC/NCEP/NWS/NOAA

