

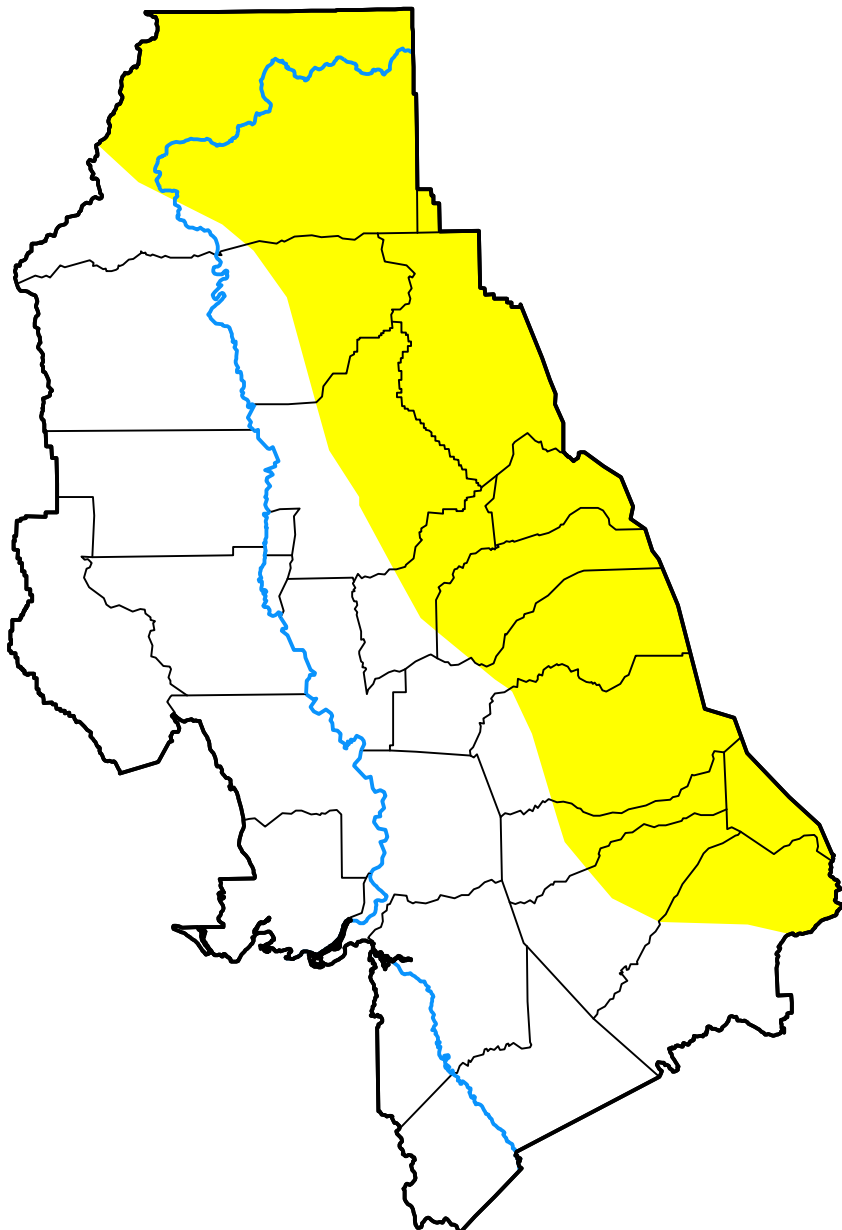
# U.S. Drought Monitor Sacramento, CA WFO

**December 20, 2011**  
(Released Thursday, Dec. 22, 2011)

Valid 7 a.m. EST

*Drought Conditions (Percent Area)*

	None	D0-D4	D1-D4	D2-D4	D3-D4	D4
<b>Current</b>	58.66	41.34	0.00	0.00	0.00	0.00
<b>Last Week</b> <i>12-15-2011</i>	75.39	24.61	0.00	0.00	0.00	0.00
<b>3 Months Ago</b> <i>09-22-2011</i>	100.00	0.00	0.00	0.00	0.00	0.00
<b>Start of Calendar Year</b> <i>01-06-2011</i>	100.00	0.00	0.00	0.00	0.00	0.00
<b>Start of Water Year</b> <i>09-29-2011</i>	100.00	0.00	0.00	0.00	0.00	0.00
<b>One Year Ago</b> <i>12-23-2010</i>	100.00	0.00	0.00	0.00	0.00	0.00



Intensity:

- None
- D0 Abnormally Dry
- D1 Moderate Drought
- D2 Severe Drought
- D3 Extreme Drought
- D4 Exceptional Drought

*The Drought Monitor focuses on broad-scale conditions. Local conditions may vary. For more information on the Drought Monitor, go to <https://droughtmonitor.unl.edu/About.aspx>*

Author:

Matthew Rosencrans  
CPC/NCEP/NWS/NOAA



**droughtmonitor.unl.edu**