

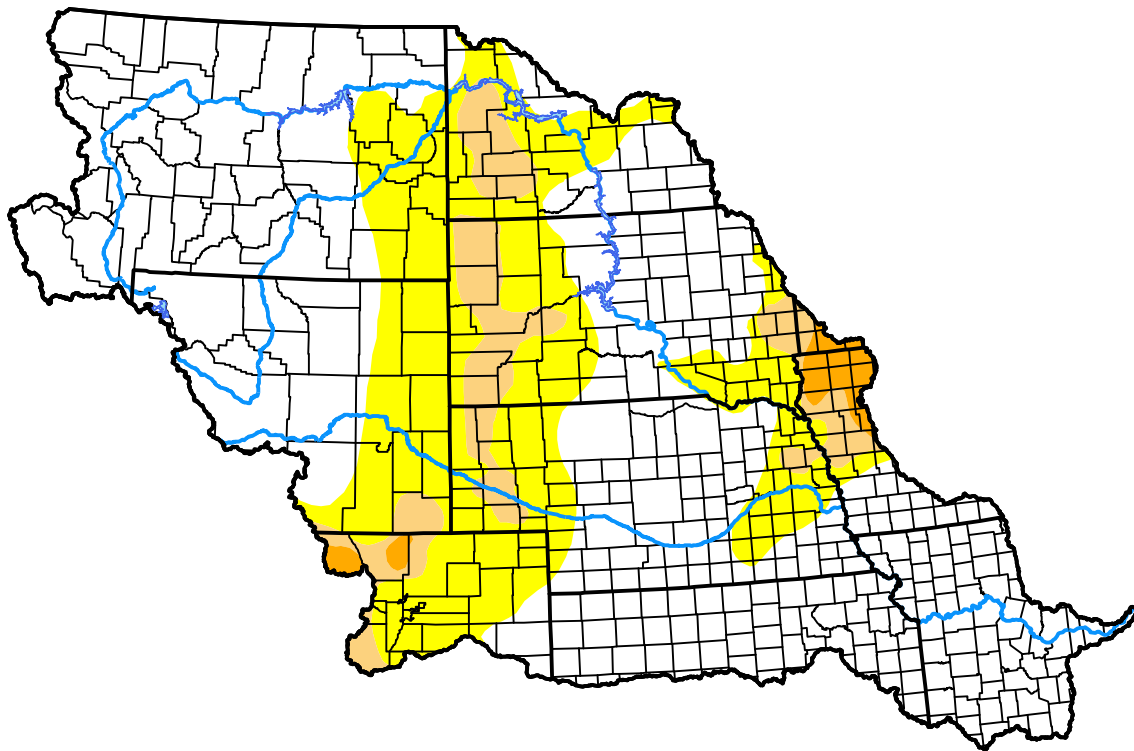
# U.S. Drought Monitor

## Missouri Watershed

**May 1, 2012**  
 (Released Thursday, May. 3, 2012)  
 Valid 8 a.m. EDT

*Drought Conditions (Percent Area)*

	None	D0-D4	D1-D4	D2-D4	D3-D4	D4
<b>Current</b>	65.67	34.33	8.53	1.40	0.00	0.00
<b>Last Week</b> <i>04-26-2012</i>	58.61	41.39	12.61	1.24	0.00	0.00
<b>3 Months Ago</b> <i>02-02-2012</i>	65.11	34.89	7.05	1.98	0.00	0.00
<b>Start of Calendar Year</b> <i>01-05-2012</i>	74.38	25.62	6.51	1.98	0.00	0.00
<b>Start of Water Year</b> <i>09-29-2011</i>	71.78	28.22	4.58	0.25	0.01	0.00
<b>One Year Ago</b> <i>05-05-2011</i>	81.41	18.59	7.90	3.09	0.00	0.00



***Intensity:***

- None
- D0 Abnormally Dry
- D1 Moderate Drought
- D2 Severe Drought
- D3 Extreme Drought
- D4 Exceptional Drought

*The Drought Monitor focuses on broad-scale conditions. Local conditions may vary. For more information on the Drought Monitor, go to <https://droughtmonitor.unl.edu/About.aspx>*

***Author:***

Matthew Rosencrans  
 CPC/NCEP/NWS/NOAA

