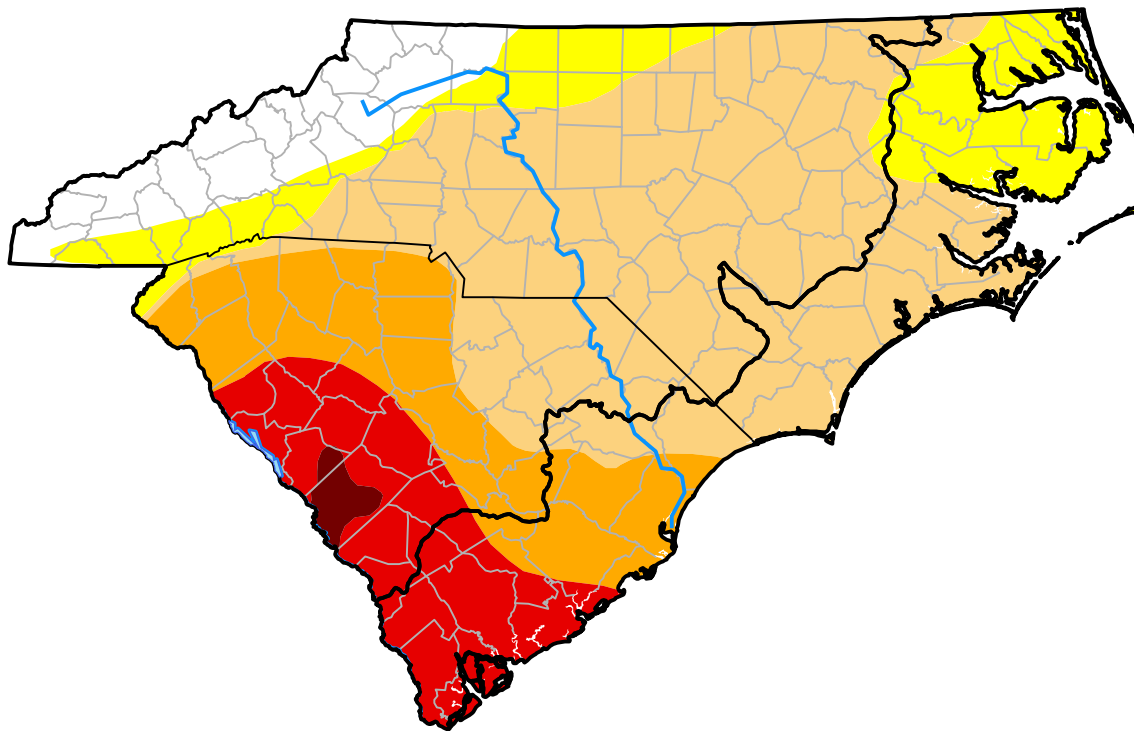


Carolinas RDEWS and Surrounding Areas

Drought Conditions (Percent Area)

	None	D0	D1	D2	D3	D4
Current	9.55	13.86	47.60	15.42	12.63	0.93
Last Week <i>04-26-2012</i>	8.27	23.47	40.87	13.79	13.05	0.54
3 Months Ago <i>02-02-2012</i>	14.55	32.81	27.02	13.84	11.78	0.00
Start of Calendar Year <i>01-05-2012</i>	33.03	17.51	33.42	7.06	8.98	0.00
Start of Water Year <i>09-29-2011</i>	35.11	27.52	16.96	8.89	11.52	0.00
One Year Ago <i>05-05-2011</i>	29.57	41.91	28.52	0.00	0.00	0.00



Intensity:

- None
- D0 Abnormally Dry
- D1 Moderate Drought
- D2 Severe Drought
- D3 Extreme Drought
- D4 Exceptional Drought

The Drought Monitor focuses on broad-scale conditions. Local conditions may vary. For more information on the Drought Monitor, go to <https://droughtmonitor.unl.edu/About.aspx>

Author:

Matthew Rosencrans
CPC/NCEP/NWS/NOAA

