

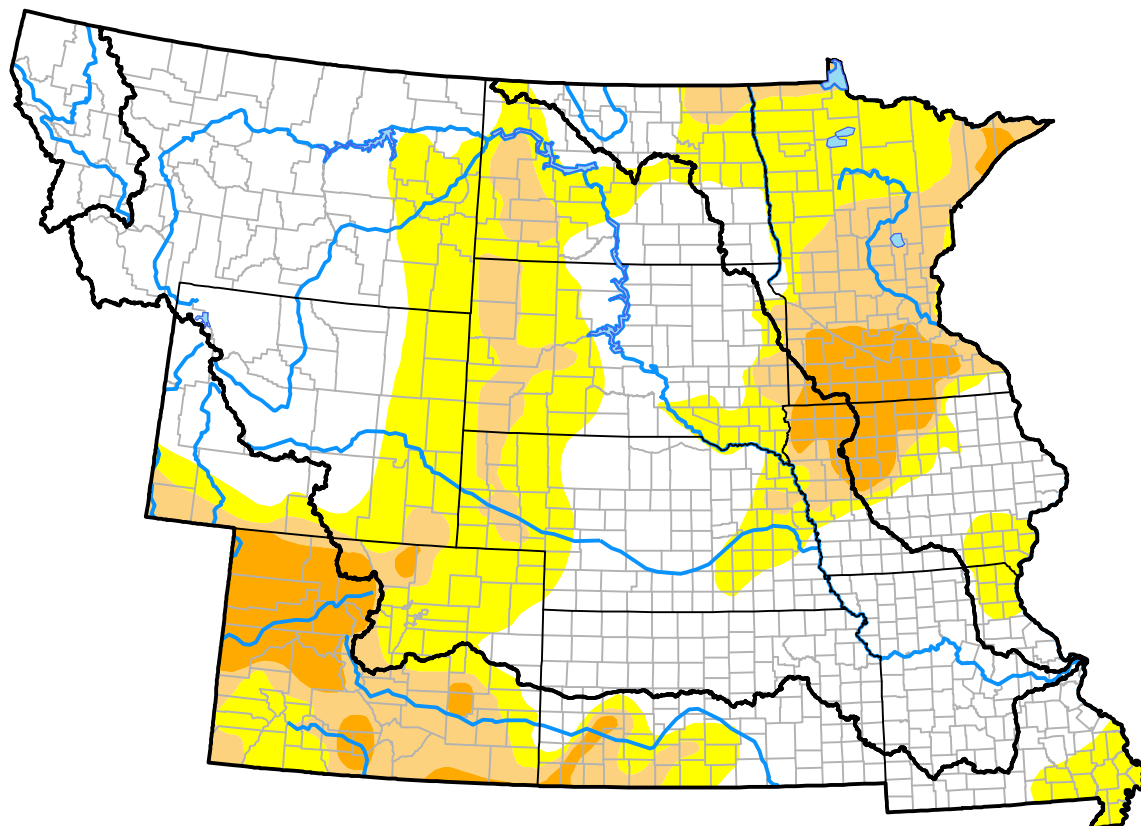
# U.S. Drought Monitor

## Missouri River Basin RDEWS

**May 1, 2012**  
 (Released Thursday, May. 3, 2012)  
 Valid 8 a.m. EDT

*Drought Conditions (Percent Area)*

	None	D0	D1	D2	D3	D4
<b>Current</b>	65.74	25.74	7.13	1.39	0.00	0.00
<b>Last Week</b> <i>04-26-2012</i>	58.70	28.71	11.37	1.23	0.00	0.00
<b>3 Months Ago</b> <i>02-02-2012</i>	65.17	27.78	5.07	1.97	0.00	0.00
<b>Start of Calendar Year</b> <i>01-05-2012</i>	74.43	19.07	4.52	1.97	0.00	0.00
<b>Start of Water Year</b> <i>09-29-2011</i>	71.66	23.74	4.34	0.24	0.01	0.00
<b>One Year Ago</b> <i>05-05-2011</i>	81.43	10.67	4.80	3.09	0.00	0.00



**Intensity:**



*The Drought Monitor focuses on broad-scale conditions. Local conditions may vary. For more information on the Drought Monitor, go to <https://droughtmonitor.unl.edu/About.aspx>*

**Author:**

Matthew Rosencrans  
 CPC/NCEP/NWS/NOAA

