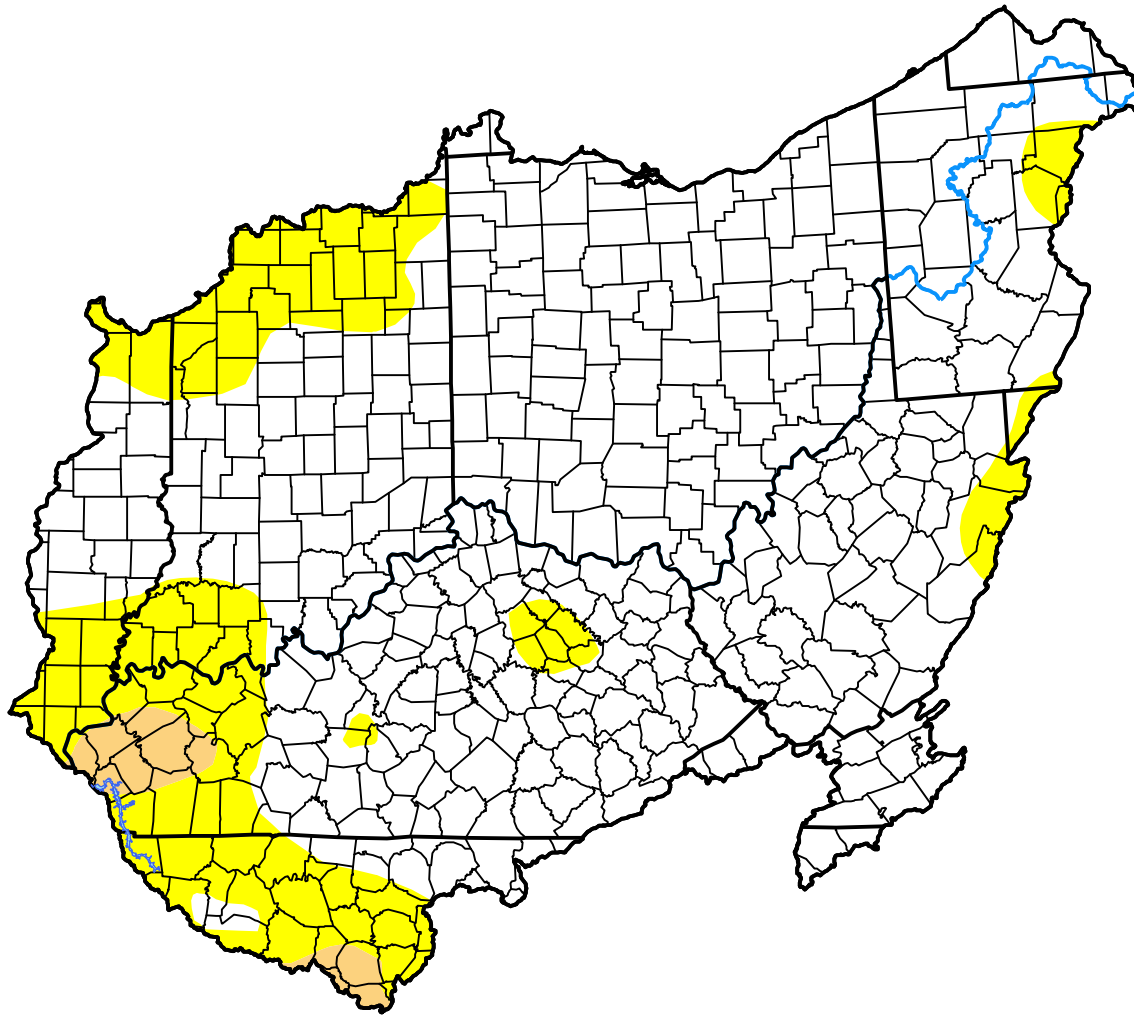


U.S. Drought Monitor

Ohio RFC

May 1, 2012
 (Released Thursday, May. 3, 2012)
 Valid 8 a.m. EDT



Drought Conditions (Percent Area)

	None	D0	D1	D2	D3	D4
Current	80.34	17.79	1.87	0.00	0.00	0.00
Last Week <i>04-26-2012</i>	79.70	18.43	1.87	0.00	0.00	0.00
3 Months Ago <i>02-02-2012</i>	100.00	0.00	0.00	0.00	0.00	0.00
Start of Calendar Year <i>01-05-2012</i>	100.00	0.00	0.00	0.00	0.00	0.00
Start of Water Year <i>09-29-2011</i>	84.51	12.58	2.91	0.00	0.00	0.00
One Year Ago <i>05-05-2011</i>	100.00	0.00	0.00	0.00	0.00	0.00

Intensity:

- None
- D0 Abnormally Dry
- D1 Moderate Drought
- D2 Severe Drought
- D3 Extreme Drought
- D4 Exceptional Drought

The Drought Monitor focuses on broad-scale conditions. Local conditions may vary. For more information on the Drought Monitor, go to <https://droughtmonitor.unl.edu/About.aspx>

Author:

Matthew Rosencrans
 CPC/NCEP/NWS/NOAA

