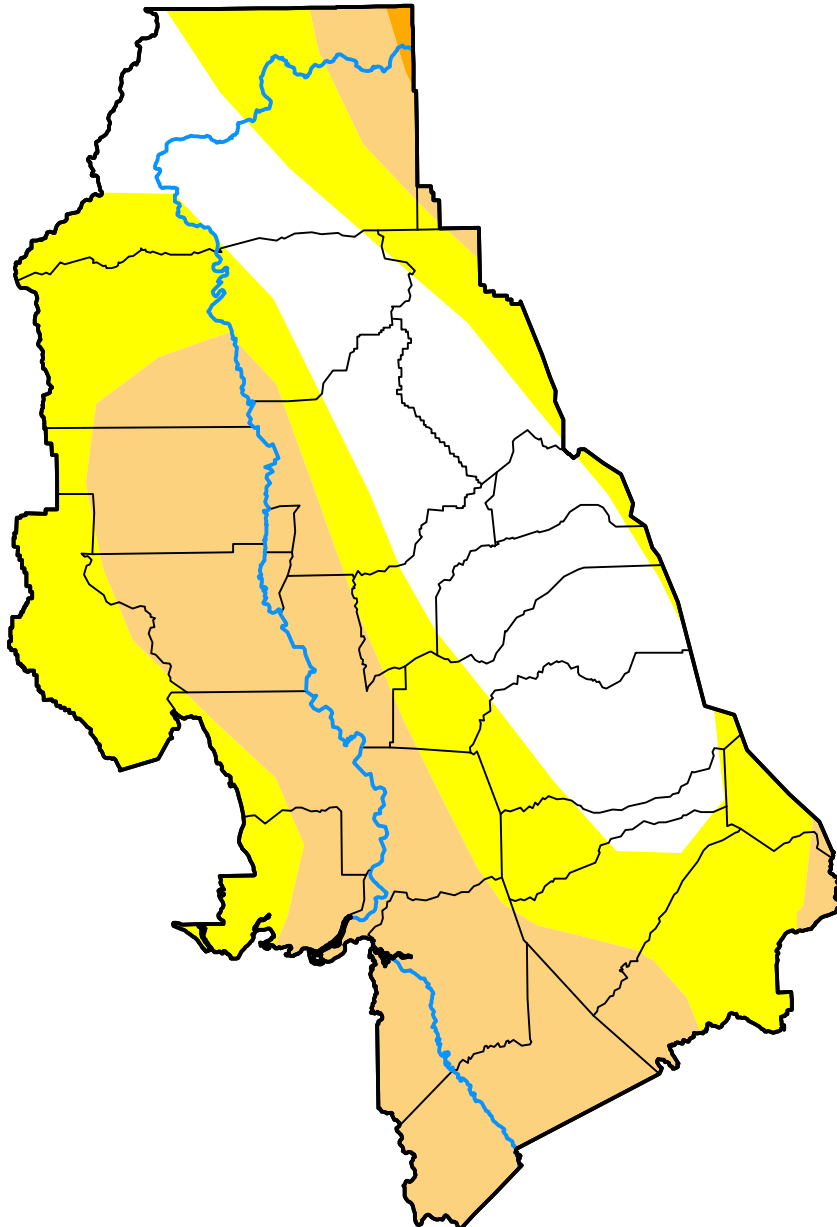


U.S. Drought Monitor Sacramento, CA WFO

May 1, 2012
(Released Thursday, May. 3, 2012)
Valid 8 a.m. EDT



Drought Conditions (Percent Area)

	None	D0-D4	D1-D4	D2-D4	D3-D4	D4
Current	27.71	72.29	36.05	0.22	0.00	0.00
Last Week <i>04-26-2012</i>	27.71	72.29	39.94	0.22	0.00	0.00
3 Months Ago <i>02-02-2012</i>	0.00	100.00	93.71	0.00	0.00	0.00
Start of Calendar Year <i>01-05-2012</i>	0.00	100.00	100.00	0.00	0.00	0.00
Start of Water Year <i>09-29-2011</i>	100.00	0.00	0.00	0.00	0.00	0.00
One Year Ago <i>05-05-2011</i>	100.00	0.00	0.00	0.00	0.00	0.00

Intensity:

- None
- D0 Abnormally Dry
- D1 Moderate Drought
- D2 Severe Drought
- D3 Extreme Drought
- D4 Exceptional Drought

The Drought Monitor focuses on broad-scale conditions. Local conditions may vary. For more information on the Drought Monitor, go to <https://droughtmonitor.unl.edu/About.aspx>

Author:

Matthew Rosencrans
CPC/NCEP/NWS/NOAA

