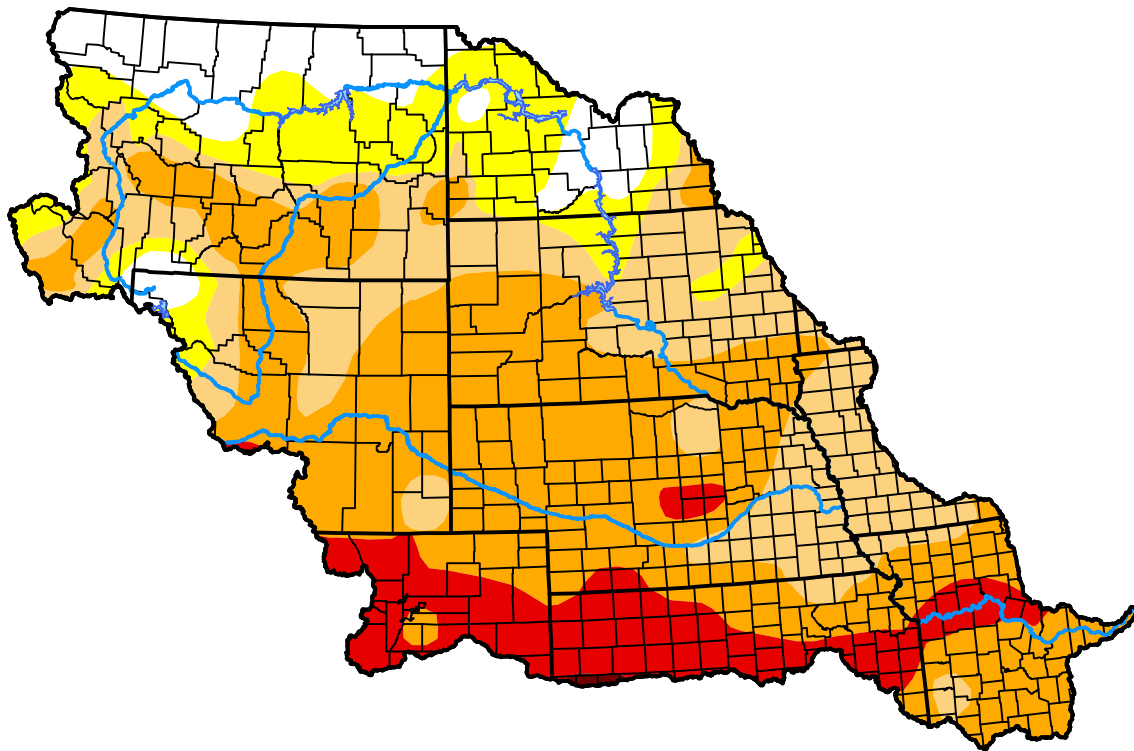


U.S. Drought Monitor

Missouri Watershed

July 17, 2012
 (Released Thursday, Jul. 19, 2012)
 Valid 8 a.m. EDT



Drought Conditions (Percent Area)

	None	D0-D4	D1-D4	D2-D4	D3-D4	D4
Current	9.90	90.10	77.01	52.48	11.10	0.14
Last Week <i>07-12-2012</i>	12.52	87.48	71.03	37.28	6.70	0.02
3 Months Ago <i>04-19-2012</i>	57.51	42.49	11.48	1.24	0.00	0.00
Start of Calendar Year <i>01-05-2012</i>	74.38	25.62	6.51	1.98	0.00	0.00
Start of Water Year <i>09-29-2011</i>	71.78	28.22	4.58	0.25	0.01	0.00
One Year Ago <i>07-21-2011</i>	96.88	3.12	1.04	0.36	0.00	0.00

Intensity:

- None
- D0 Abnormally Dry
- D1 Moderate Drought
- D2 Severe Drought
- D3 Extreme Drought
- D4 Exceptional Drought

The Drought Monitor focuses on broad-scale conditions. Local conditions may vary. For more information on the Drought Monitor, go to <https://droughtmonitor.unl.edu/About.aspx>

Author:

Richard Heim
 NCEI/NOAA

