

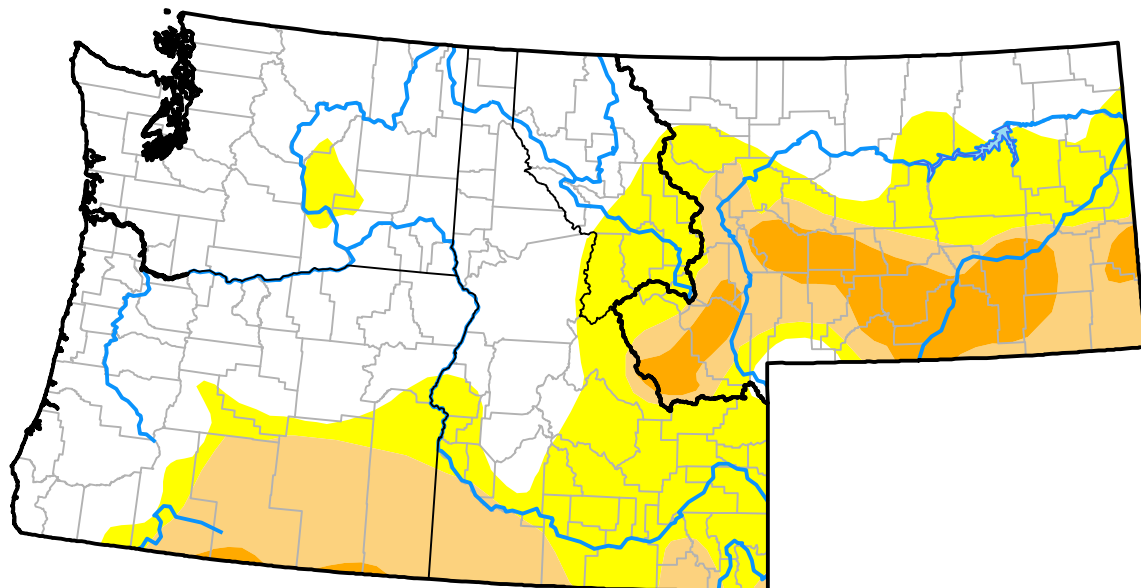
U.S. Drought Monitor

Pacific Northwest RDEWS

July 17, 2012
 (Released Thursday, Jul. 19, 2012)
 Valid 8 a.m. EDT

Drought Conditions (Percent Area)

	None	D0	D1	D2	D3	D4
Current	63.45	23.02	13.10	0.43	0.00	0.00
Last Week <i>07-12-2012</i>	62.59	30.18	6.80	0.43	0.00	0.00
3 Months Ago <i>04-19-2012</i>	76.48	13.90	9.26	0.36	0.00	0.00
Start of Calendar Year <i>01-05-2012</i>	53.17	39.00	7.83	0.00	0.00	0.00
Start of Water Year <i>09-29-2011</i>	89.07	10.93	0.00	0.00	0.00	0.00
One Year Ago <i>07-21-2011</i>	100.00	0.00	0.00	0.00	0.00	0.00



Intensity:

- None
- D0 Abnormally Dry
- D1 Moderate Drought
- D2 Severe Drought
- D3 Extreme Drought
- D4 Exceptional Drought

The Drought Monitor focuses on broad-scale conditions. Local conditions may vary. For more information on the Drought Monitor, go to <https://droughtmonitor.unl.edu/About.aspx>

Author:

Richard Heim
 NCEI/NOAA



droughtmonitor.unl.edu