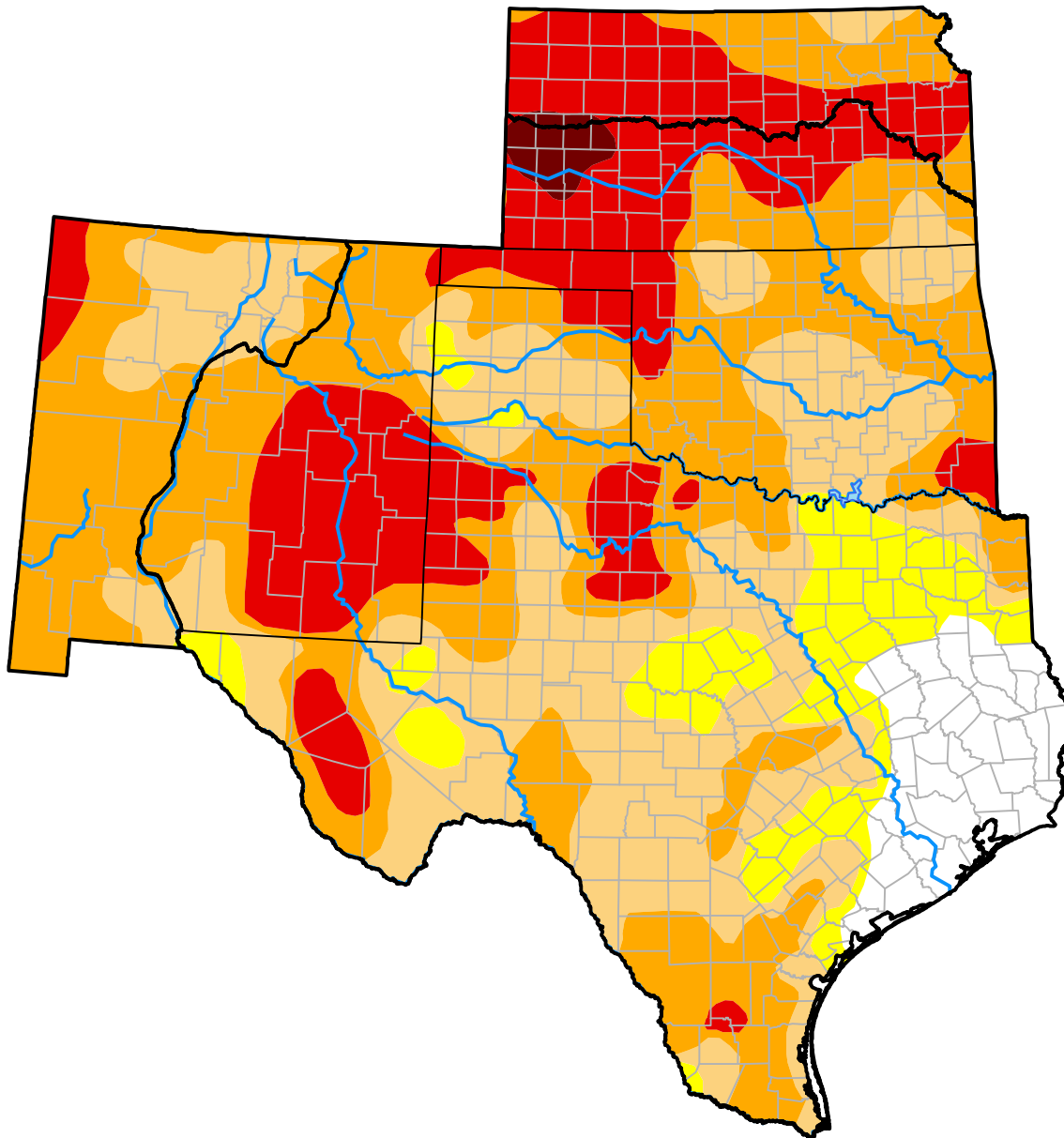


U.S. Drought Monitor

Southern Plains RDEWS

July 17, 2012
 (Released Thursday, Jul. 19, 2012)
 Valid 8 a.m. EDT



Drought Conditions (Percent Area)

	None	D0-D4	D1-D4	D2-D4	D3-D4	D4
Current	7.20	92.80	83.01	50.33	14.03	0.00
Last Week <i>07-12-2012</i>	2.65	97.35	86.59	50.03	13.85	0.00
3 Months Ago <i>04-19-2012</i>	22.04	77.96	62.38	44.20	22.72	7.96
Start of Calendar Year <i>01-05-2012</i>	4.58	95.42	92.19	76.19	49.52	21.41
Start of Water Year <i>09-29-2011</i>	0.00	100.00	99.04	96.58	86.74	69.32
One Year Ago <i>07-21-2011</i>	0.00	100.00	99.39	92.21	82.87	63.02

Intensity:



The Drought Monitor focuses on broad-scale conditions. Local conditions may vary. For more information on the Drought Monitor, go to <https://droughtmonitor.unl.edu/About.aspx>

Author:

Richard Heim
 NCEI/NOAA

