

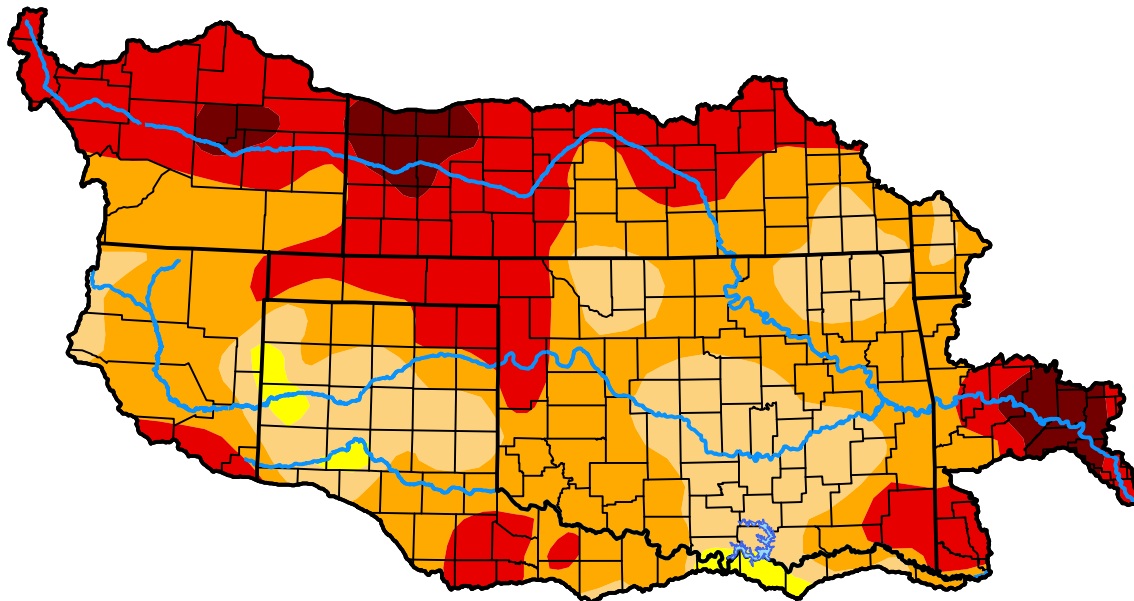
# U.S. Drought Monitor

## Arkansas Red Basin RFC

**July 17, 2012**  
 (Released Thursday, Jul. 19, 2012)  
 Valid 8 a.m. EDT

### Drought Conditions (Percent Area)

	None	D0-D4	D1-D4	D2-D4	D3-D4	D4
<b>Current</b>	0.00	100.00	98.39	77.37	34.57	4.76
<b>Last Week</b> <i>07-12-2012</i>	0.31	99.69	97.64	62.61	24.83	1.11
<b>3 Months Ago</b> <i>04-19-2012</i>	45.56	54.44	42.52	20.48	5.10	0.93
<b>Start of Calendar Year</b> <i>01-05-2012</i>	13.02	86.98	77.81	48.50	17.94	2.56
<b>Start of Water Year</b> <i>09-29-2011</i>	1.03	98.97	96.82	89.06	62.98	44.35
<b>One Year Ago</b> <i>07-21-2011</i>	0.80	99.20	91.84	74.16	57.59	33.33



### Intensity:



The Drought Monitor focuses on broad-scale conditions. Local conditions may vary. For more information on the Drought Monitor, go to <https://droughtmonitor.unl.edu/About.aspx>

### Author:

Richard Heim  
 NCEI/NOAA



[droughtmonitor.unl.edu](https://droughtmonitor.unl.edu)