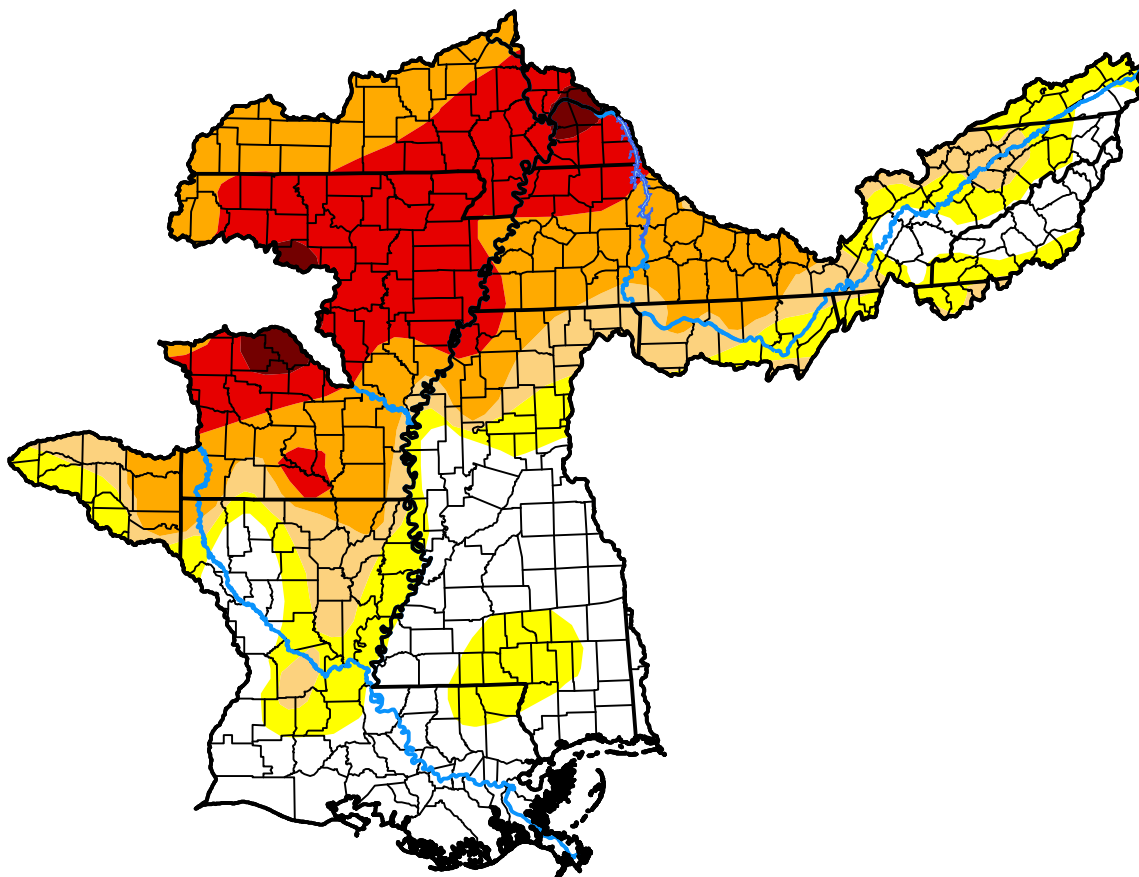


U.S. Drought Monitor

Lower Mississippi RFC

July 17, 2012
 (Released Thursday, Jul. 19, 2012)
 Valid 8 a.m. EDT



Drought Conditions (Percent Area)

	None	D0	D1	D2	D3	D4
Current	29.29	16.86	11.41	22.00	18.94	1.50
Last Week <i>07-12-2012</i>	21.95	19.27	16.40	20.51	21.30	0.56
3 Months Ago <i>04-19-2012</i>	83.04	16.66	0.30	0.00	0.00	0.00
Start of Calendar Year <i>01-05-2012</i>	67.53	6.84	11.46	8.15	4.54	1.48
Start of Water Year <i>09-29-2011</i>	52.83	17.45	10.82	7.04	6.44	5.43
One Year Ago <i>07-21-2011</i>	38.47	18.60	9.17	11.41	13.51	8.84

Intensity:



The Drought Monitor focuses on broad-scale conditions. Local conditions may vary. For more information on the Drought Monitor, go to <https://droughtmonitor.unl.edu/About.aspx>

Author:

Richard Heim
 NCEI/NOAA

