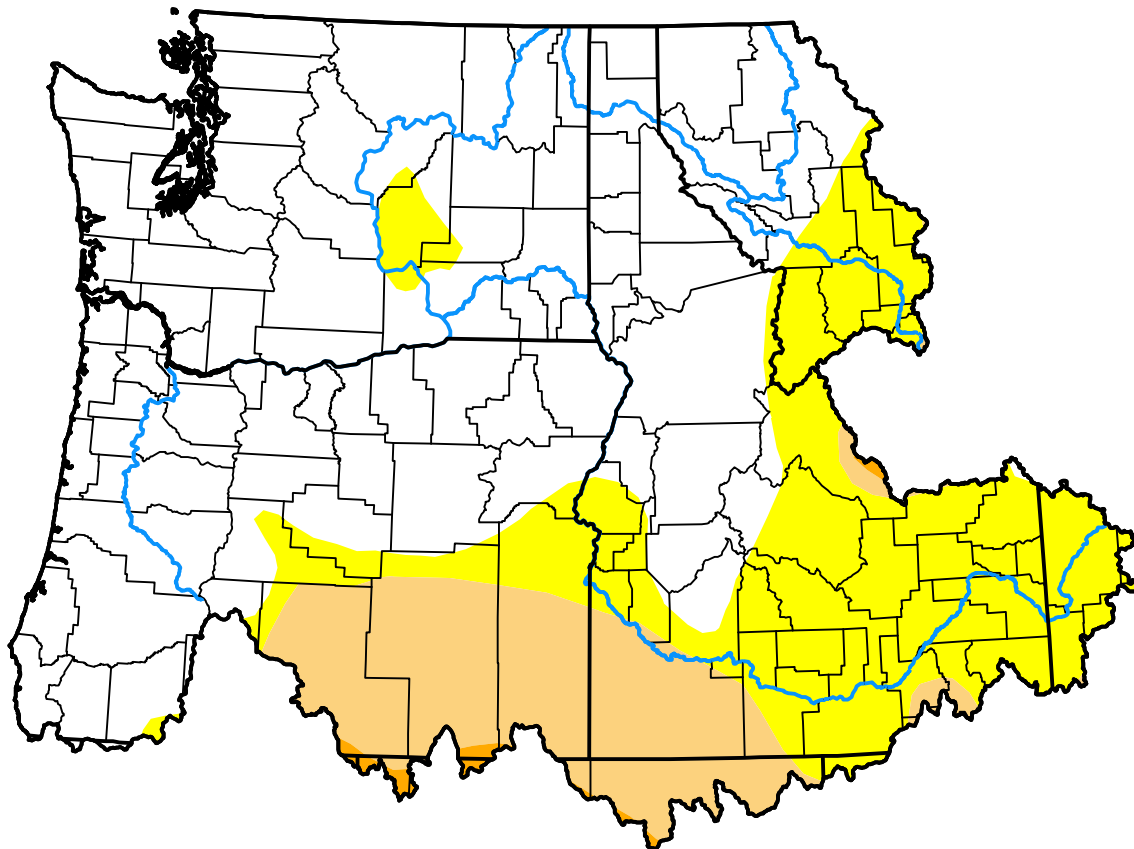


U.S. Drought Monitor Northwest RFC

July 17, 2012
(Released Thursday, Jul. 19, 2012)
Valid 8 a.m. EDT



Drought Conditions (Percent Area)

	None	D0-D4	D1-D4	D2-D4	D3-D4	D4
Current	62.90	37.10	13.50	0.45	0.00	0.00
Last Week <i>07-12-2012</i>	62.04	37.96	6.91	0.45	0.00	0.00
3 Months Ago <i>04-19-2012</i>	77.60	22.40	9.15	0.36	0.00	0.00
Start of Calendar Year <i>01-05-2012</i>	53.73	46.27	7.08	0.00	0.00	0.00
Start of Water Year <i>09-29-2011</i>	89.10	10.90	0.00	0.00	0.00	0.00
One Year Ago <i>07-21-2011</i>	100.00	0.00	0.00	0.00	0.00	0.00

Intensity:



The Drought Monitor focuses on broad-scale conditions. Local conditions may vary. For more information on the Drought Monitor, go to <https://droughtmonitor.unl.edu/About.aspx>

Author:

Richard Heim
NCEI/NOAA

