

U.S. Drought Monitor

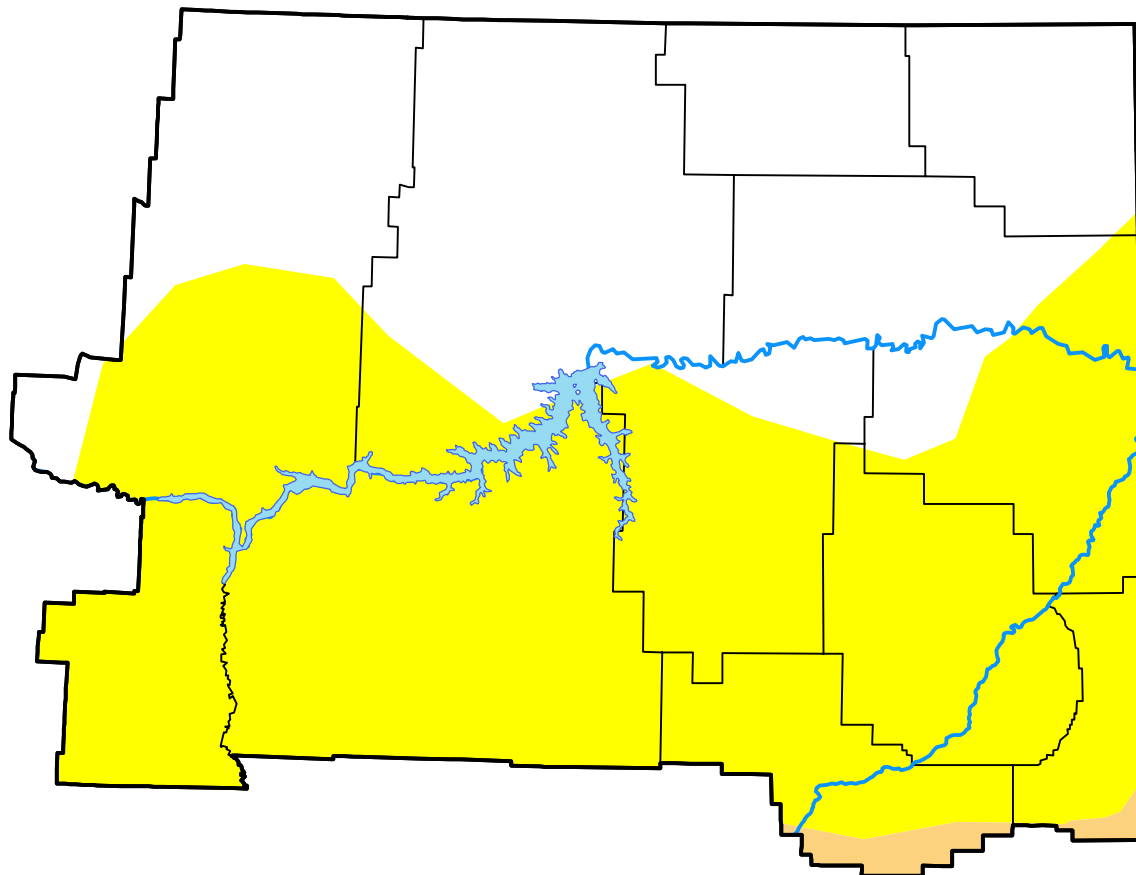
Glasgow, MT WFO

July 17, 2012
 (Released Thursday, Jul. 19, 2012)

Valid 8 a.m. EDT

Drought Conditions (Percent Area)

	None	D0-D4	D1-D4	D2-D4	D3-D4	D4
Current	42.24	57.76	1.17	0.00	0.00	0.00
Last Week <i>07-12-2012</i>	50.79	49.21	1.17	0.00	0.00	0.00
3 Months Ago <i>04-19-2012</i>	29.10	70.90	0.00	0.00	0.00	0.00
Start of Calendar Year <i>01-05-2012</i>	82.87	17.13	0.00	0.00	0.00	0.00
Start of Water Year <i>09-29-2011</i>	97.96	2.04	0.00	0.00	0.00	0.00
One Year Ago <i>07-21-2011</i>	100.00	0.00	0.00	0.00	0.00	0.00



Intensity:



The Drought Monitor focuses on broad-scale conditions. Local conditions may vary. For more information on the Drought Monitor, go to <https://droughtmonitor.unl.edu/About.aspx>

Author:

Richard Heim
 NCEI/NOAA



droughtmonitor.unl.edu