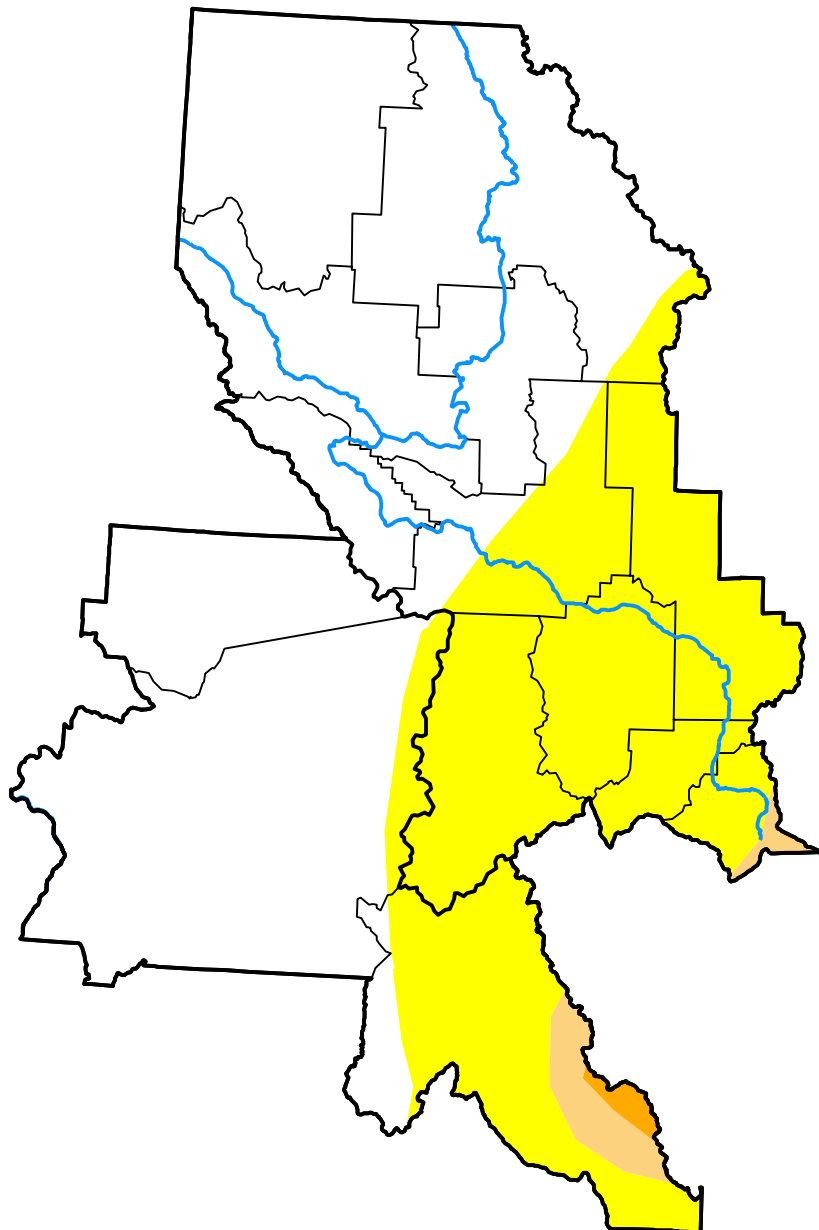


# U.S. Drought Monitor

## Missoula, MT WFO

**July 17, 2012**  
 (Released Thursday, Jul. 19, 2012)

Valid 8 a.m. EDT



*Drought Conditions (Percent Area)*

	None	D0-D4	D1-D4	D2-D4	D3-D4	D4
<b>Current</b>	64.82	35.18	2.26	0.37	0.00	0.00
<b>Last Week</b> <i>07-12-2012</i>	72.78	27.22	2.26	0.37	0.00	0.00
<b>3 Months Ago</b> <i>04-19-2012</i>	100.00	0.00	0.00	0.00	0.00	0.00
<b>Start of Calendar Year</b> <i>01-05-2012</i>	96.04	3.96	0.00	0.00	0.00	0.00
<b>Start of Water Year</b> <i>09-29-2011</i>	33.45	66.55	0.00	0.00	0.00	0.00
<b>One Year Ago</b> <i>07-21-2011</i>	100.00	0.00	0.00	0.00	0.00	0.00

***Intensity:***

- None
- D0 Abnormally Dry
- D1 Moderate Drought
- D2 Severe Drought
- D3 Extreme Drought
- D4 Exceptional Drought

*The Drought Monitor focuses on broad-scale conditions. Local conditions may vary. For more information on the Drought Monitor, go to <https://droughtmonitor.unl.edu/About.aspx>*

***Author:***

Richard Heim  
 NCEI/NOAA

