

U.S. Drought Monitor

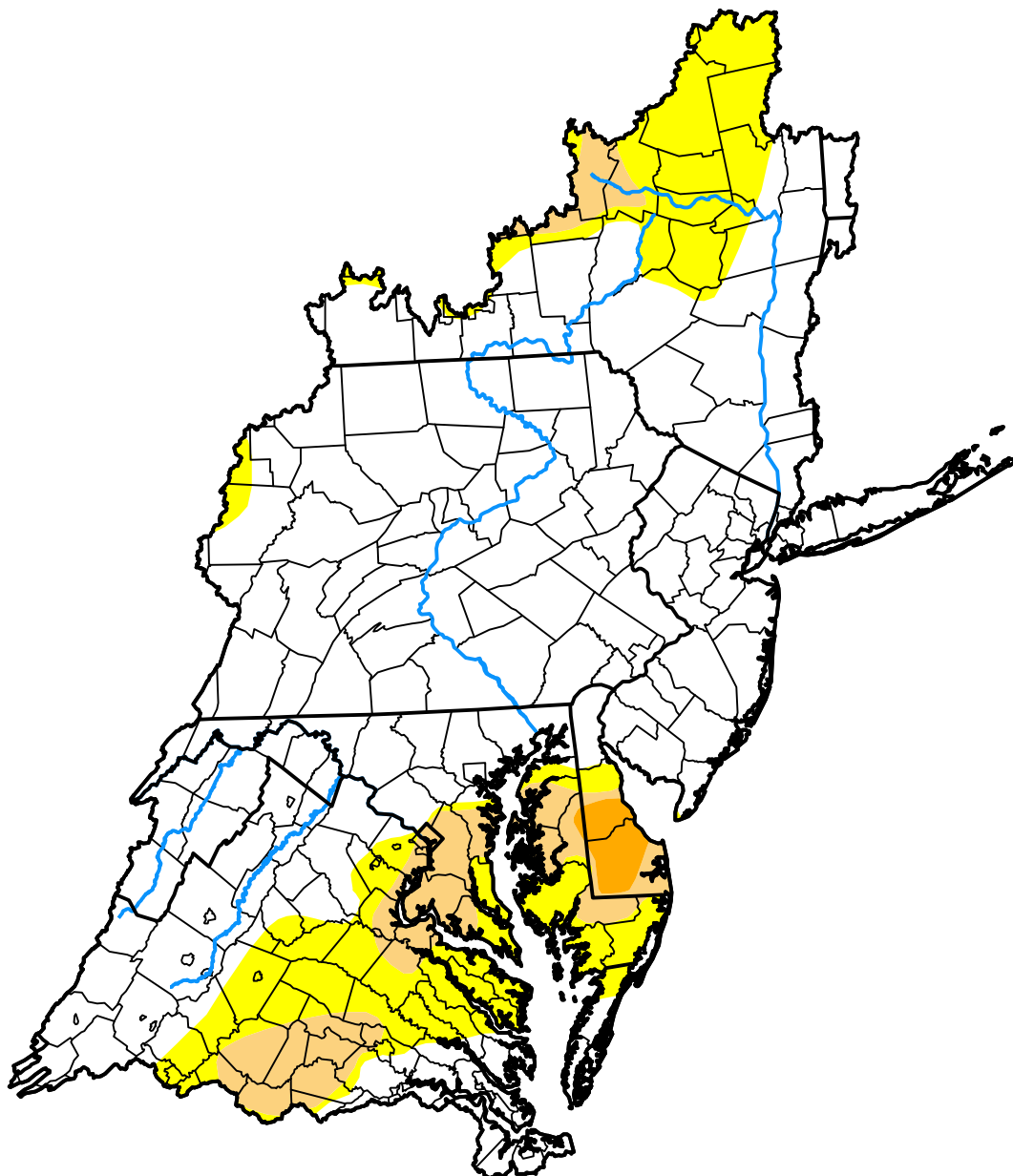
Mid Atlantic Watershed

October 16, 2012
 (Released Thursday, Oct. 18, 2012)

Valid 8 a.m. EDT

Drought Conditions (Percent Area)

	None	D0	D1	D2	D3	D4
Current	75.00	16.73	7.30	0.97	0.00	0.00
Last Week <i>10-11-2012</i>	74.60	17.05	7.38	0.97	0.00	0.00
3 Months Ago <i>07-19-2012</i>	23.50	58.39	17.43	0.68	0.00	0.00
Start of Calendar Year <i>01-05-2012</i>	97.80	2.20	0.00	0.00	0.00	0.00
Start of Water Year <i>09-27-2012</i>	71.71	16.33	10.99	0.97	0.00	0.00
One Year Ago <i>10-20-2011</i>	100.00	0.00	0.00	0.00	0.00	0.00



Intensity:

- None
- D0 Abnormally Dry
- D1 Moderate Drought
- D2 Severe Drought
- D3 Extreme Drought
- D4 Exceptional Drought

The Drought Monitor focuses on broad-scale conditions. Local conditions may vary. For more information on the Drought Monitor, go to <https://droughtmonitor.unl.edu/About.aspx>

Author:

Matthew Rosencrans
 CPC/NCEP/NWS/NOAA

