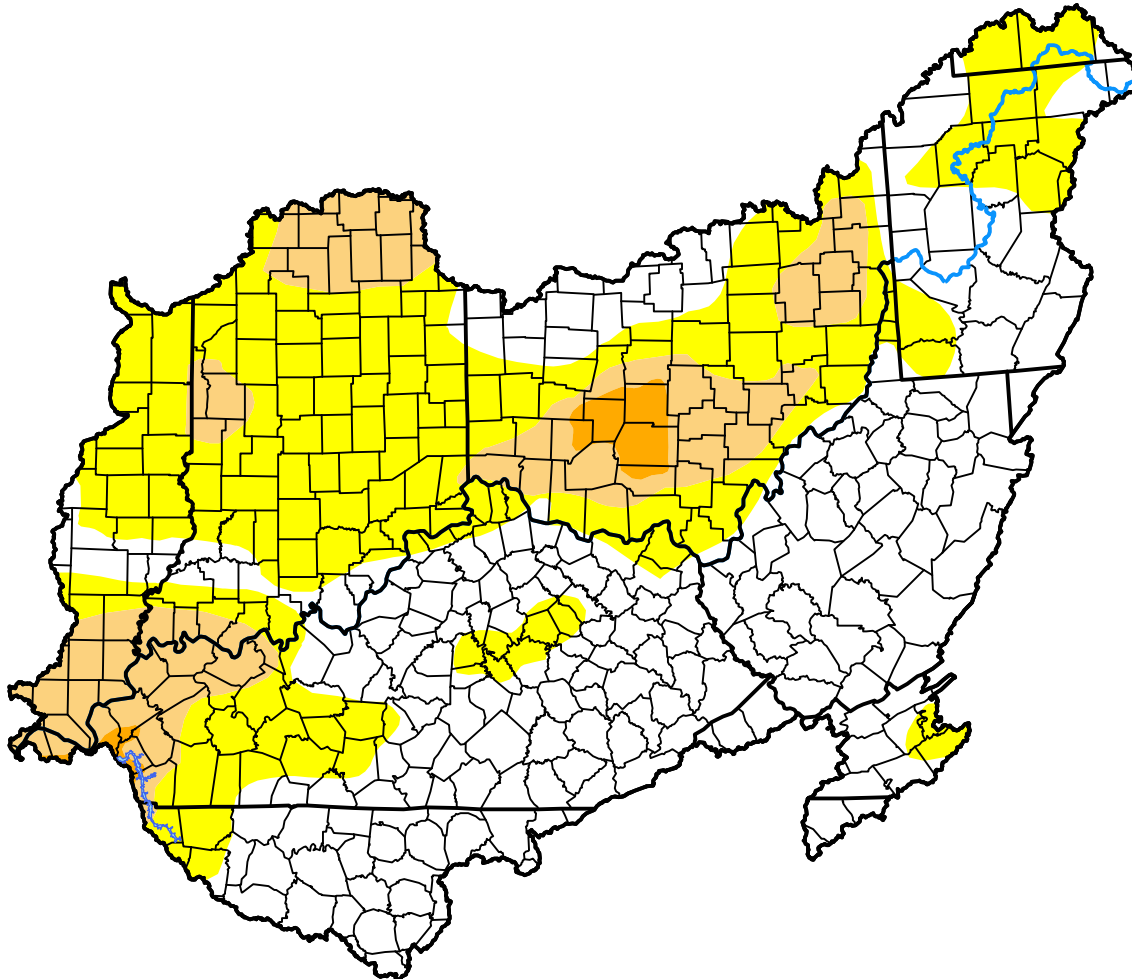


U.S. Drought Monitor Ohio Watershed

October 16, 2012
(Released Thursday, Oct. 18, 2012)
Valid 8 a.m. EDT

Drought Conditions (Percent Area)

	None	D0	D1	D2	D3	D4
Current	49.30	36.08	13.26	1.37	0.00	0.00
Last Week <i>10-11-2012</i>	48.74	31.99	16.97	2.29	0.00	0.00
3 Months Ago <i>07-19-2012</i>	2.88	27.72	32.66	20.45	14.07	2.24
Start of Calendar Year <i>01-05-2012</i>	100.00	0.00	0.00	0.00	0.00	0.00
Start of Water Year <i>09-27-2012</i>	37.98	23.75	26.38	11.90	0.00	0.00
One Year Ago <i>10-20-2011</i>	95.42	4.03	0.55	0.00	0.00	0.00



Intensity:



The Drought Monitor focuses on broad-scale conditions. Local conditions may vary. For more information on the Drought Monitor, go to <https://droughtmonitor.unl.edu/About.aspx>

Author:

Matthew Rosencrans
CPC/NCEP/NWS/NOAA



droughtmonitor.unl.edu