

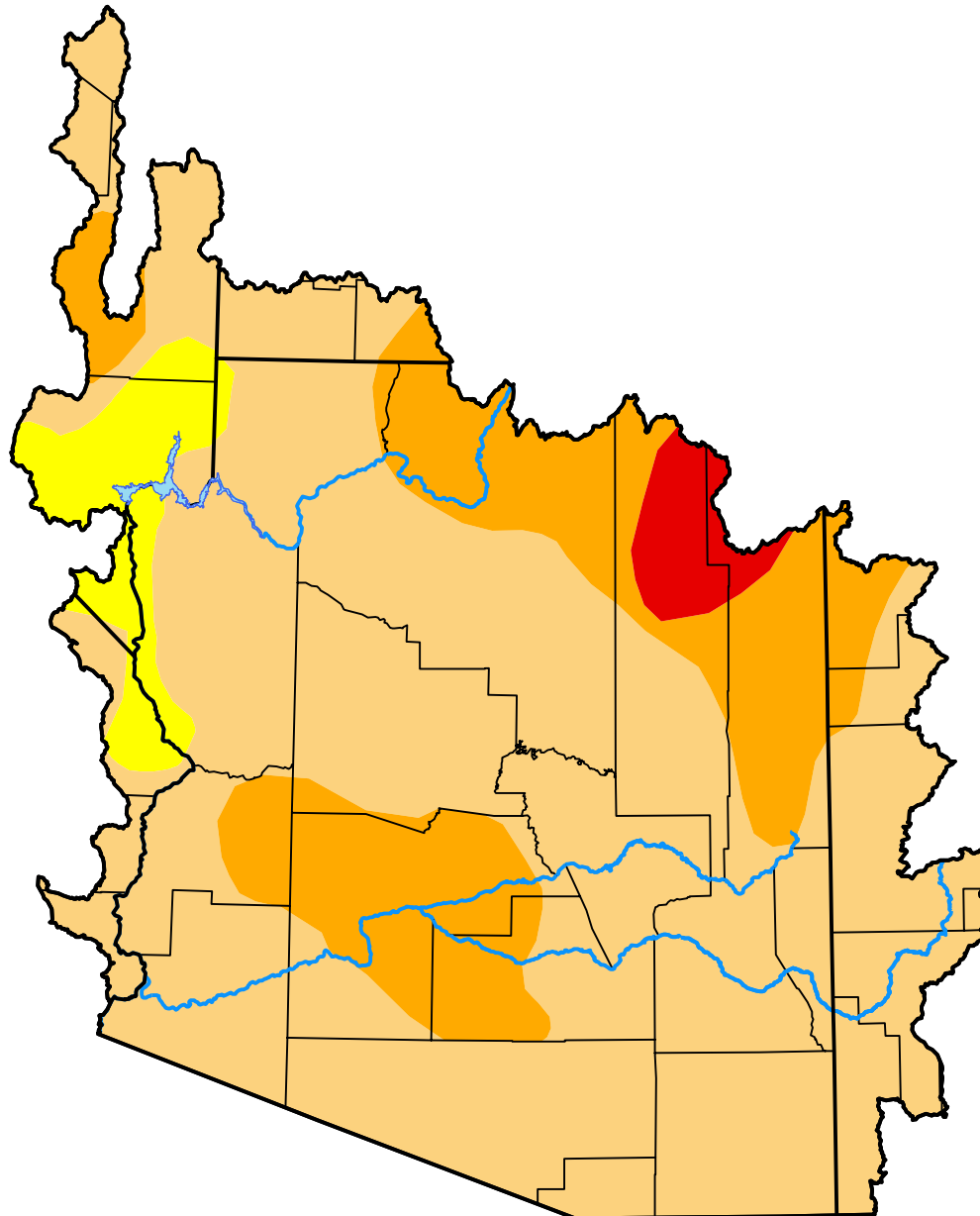
U.S. Drought Monitor

Lower Colorado Watershed

October 16, 2012
 (Released Thursday, Oct. 18, 2012)
 Valid 8 a.m. EDT

Drought Conditions (Percent Area)

	None	D0	D1	D2	D3	D4
Current	0.00	5.42	71.16	20.99	2.42	0.00
Last Week <i>10-11-2012</i>	0.00	0.50	75.03	22.05	2.42	0.00
3 Months Ago <i>07-19-2012</i>	0.00	0.00	7.32	74.63	18.05	0.00
Start of Calendar Year <i>01-05-2012</i>	25.39	21.58	24.39	26.38	2.26	0.00
Start of Water Year <i>09-27-2012</i>	0.00	0.52	74.53	22.53	2.42	0.00
One Year Ago <i>10-20-2011</i>	11.45	28.69	20.28	21.98	14.35	3.26



Intensity:

- None
- D0 Abnormally Dry
- D1 Moderate Drought
- D2 Severe Drought
- D3 Extreme Drought
- D4 Exceptional Drought

The Drought Monitor focuses on broad-scale conditions. Local conditions may vary. For more information on the Drought Monitor, go to <https://droughtmonitor.unl.edu/About.aspx>

Author:

Matthew Rosencrans
 CPC/NCEP/NWS/NOAA



droughtmonitor.unl.edu