

# U.S. Drought Monitor

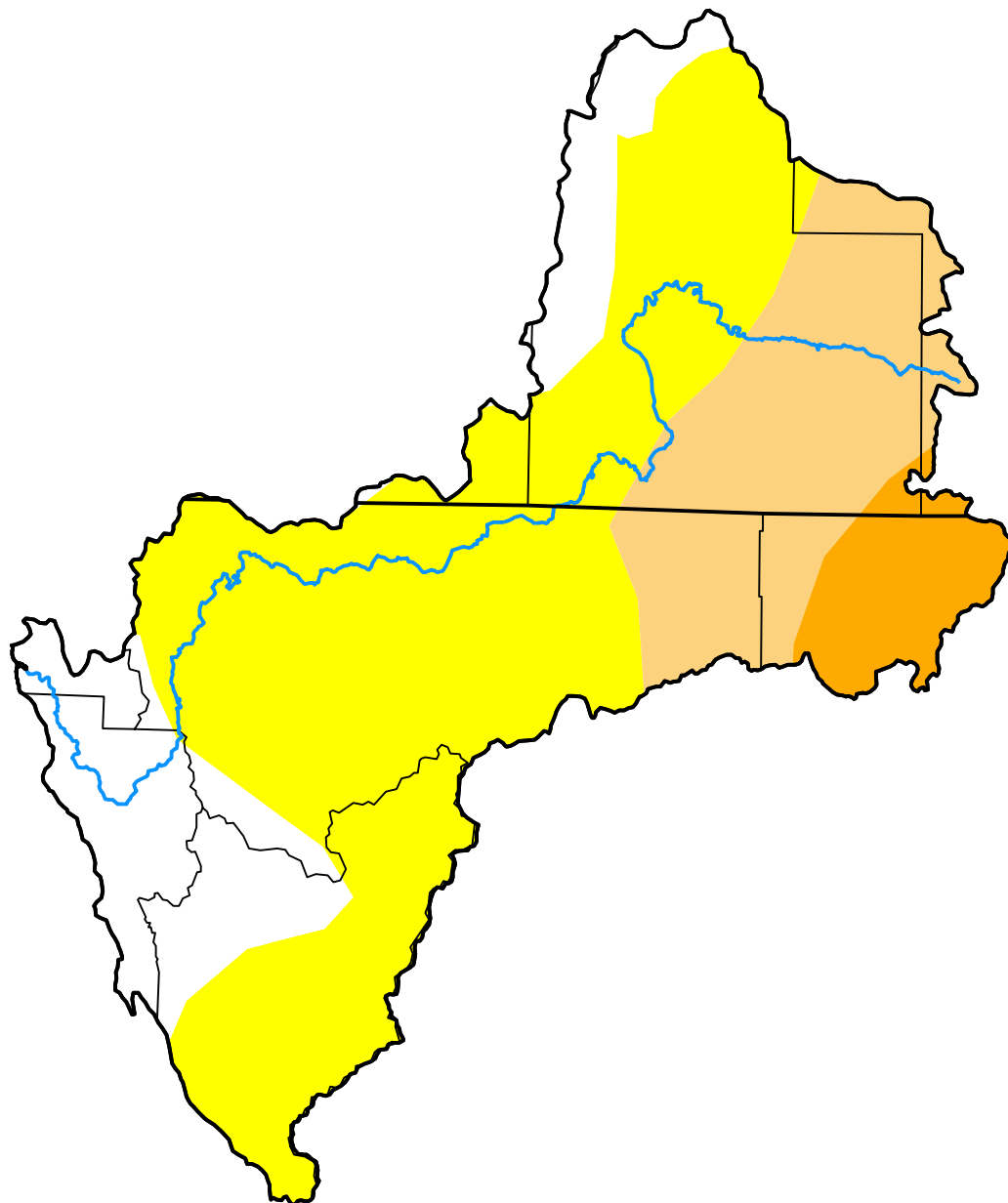
## Klamath River Basin

**October 16, 2012**  
*(Released Thursday, Oct. 18, 2012)*

Valid 8 a.m. EDT

*Drought Conditions (Percent Area)*

	None	D0	D1	D2	D3	D4
<b>Current</b>	18.40	54.40	20.82	6.38	0.00	0.00
<b>Last Week</b> <i>10-09-2012</i>	16.18	56.26	21.19	6.37	0.00	0.00
<b>3 Months Ago</b> <i>07-17-2012</i>	46.34	24.47	21.65	7.54	0.00	0.00
<b>Start of Calendar Year</b> <i>01-03-2012</i>	0.00	50.63	49.37	0.00	0.00	0.00
<b>Start of Water Year</b> <i>09-25-2012</i>	47.37	23.71	21.70	7.22	0.00	0.00
<b>One Year Ago</b> <i>10-18-2011</i>	100.00	0.00	0.00	0.00	0.00	0.00



Intensity:

- None
- D0 Abnormally Dry
- D1 Moderate Drought
- D2 Severe Drought
- D3 Extreme Drought
- D4 Exceptional Drought

*The Drought Monitor focuses on broad-scale conditions. Local conditions may vary. For more information on the Drought Monitor, go to <https://droughtmonitor.unl.edu/About.aspx>*

Author:

Matthew Rosencrans  
 CPC/NCEP/NWS/NOAA

