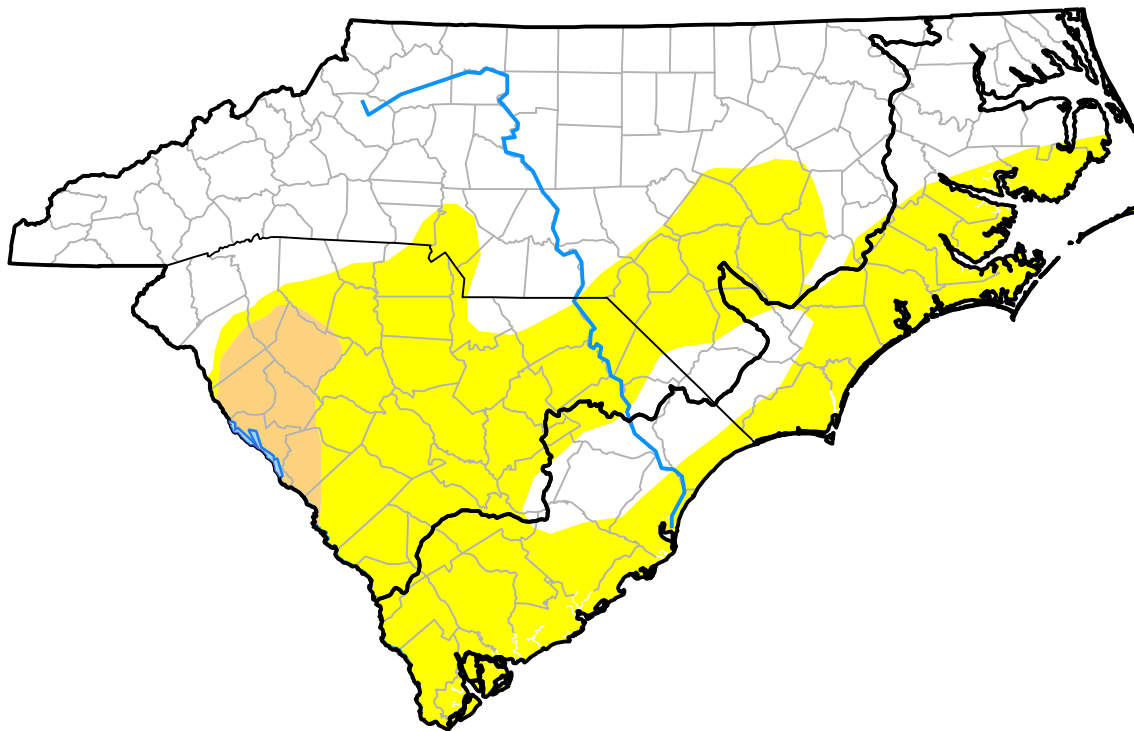


Carolinas RDEWS and Surrounding Areas

Drought Conditions (Percent Area)

	None	D0	D1	D2	D3	D4
Current	53.82	42.48	3.70	0.00	0.00	0.00
Last Week <i>10-11-2012</i>	73.60	22.79	3.61	0.00	0.00	0.00
3 Months Ago <i>07-19-2012</i>	37.27	31.74	22.38	7.26	1.33	0.02
Start of Calendar Year <i>01-05-2012</i>	33.03	17.51	33.42	7.06	8.98	0.00
Start of Water Year <i>09-27-2012</i>	67.06	28.49	4.45	0.00	0.00	0.00
One Year Ago <i>10-20-2011</i>	34.03	21.27	24.58	8.12	12.01	0.00



Intensity:

- None
- D0 Abnormally Dry
- D1 Moderate Drought
- D2 Severe Drought
- D3 Extreme Drought
- D4 Exceptional Drought

The Drought Monitor focuses on broad-scale conditions. Local conditions may vary. For more information on the Drought Monitor, go to <https://droughtmonitor.unl.edu/About.aspx>

Author:

Matthew Rosencrans
CPC/NCEP/NWS/NOAA

