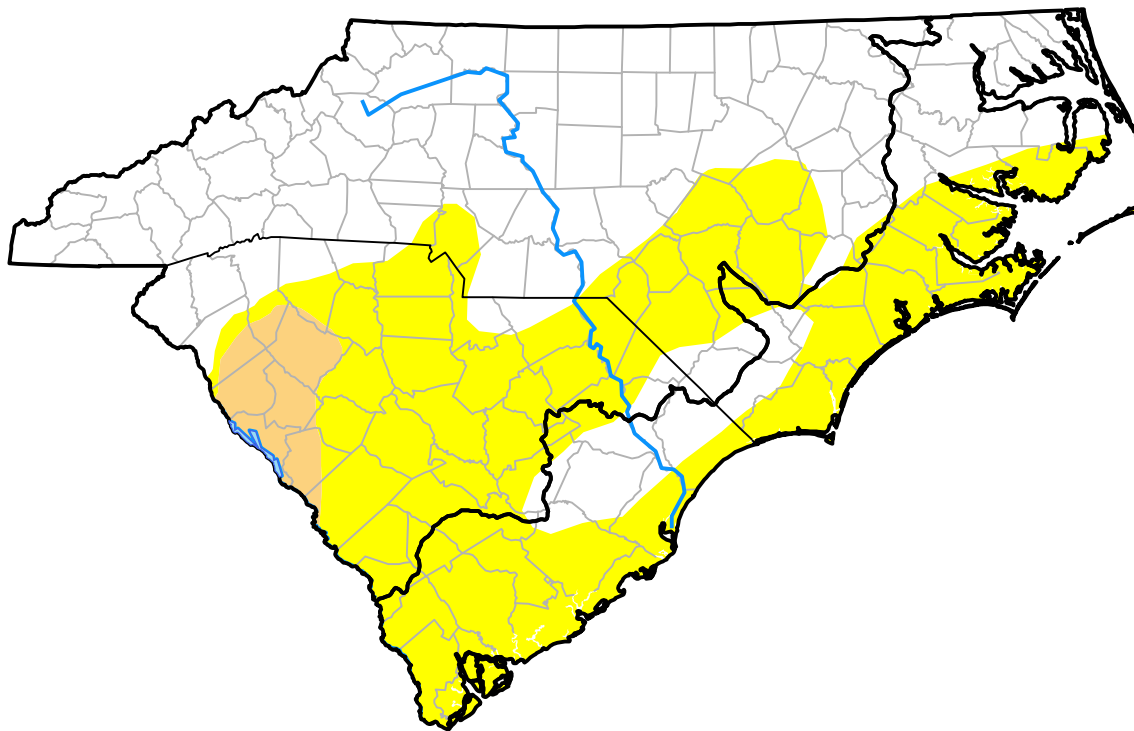


# U.S. Drought Monitor

## Coastal Carolinas RDEWS

**October 16, 2012**  
 (Released Thursday, Oct. 18, 2012)  
 Valid 8 a.m. EDT



*Drought Conditions (Percent Area)*

	None	D0-D4	D1-D4	D2-D4	D3-D4	D4
<b>Current</b>	30.95	69.05	0.00	0.00	0.00	0.00
<b>Last Week</b> <i>10-11-2012</i>	81.76	18.24	0.00	0.00	0.00	0.00
<b>3 Months Ago</b> <i>07-19-2012</i>	45.21	54.79	34.05	0.00	0.00	0.00
<b>Start of Calendar Year</b> <i>01-05-2012</i>	0.22	99.78	81.30	18.61	11.65	0.00
<b>Start of Water Year</b> <i>09-27-2012</i>	81.76	18.24	0.00	0.00	0.00	0.00
<b>One Year Ago</b> <i>10-20-2011</i>	46.62	53.38	37.67	17.01	11.01	0.00

*Intensity:*



*The Drought Monitor focuses on broad-scale conditions. Local conditions may vary. For more information on the Drought Monitor, go to <https://droughtmonitor.unl.edu/About.aspx>*

*Author:*

Matthew Rosencrans  
 CPC/NCEP/NWS/NOAA



**droughtmonitor.unl.edu**