

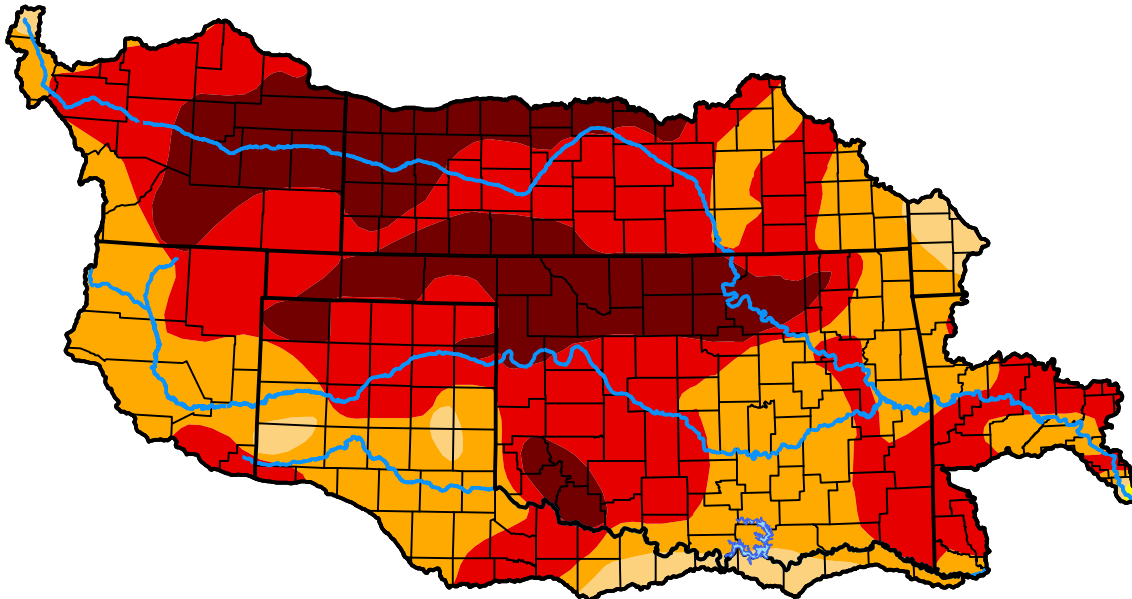
U.S. Drought Monitor

Arkansas Red Basin RFC

October 16, 2012
 (Released Thursday, Oct. 18, 2012)
 Valid 8 a.m. EDT

Drought Conditions (Percent Area)

	None	D0	D1	D2	D3	D4
Current	0.00	0.06	3.57	32.80	41.82	21.75
Last Week <i>10-11-2012</i>	0.00	0.06	3.05	23.42	49.64	23.83
3 Months Ago <i>07-19-2012</i>	0.00	1.61	21.02	42.80	29.80	4.76
Start of Calendar Year <i>01-05-2012</i>	13.02	9.17	29.31	30.56	15.39	2.56
Start of Water Year <i>09-27-2012</i>	0.00	0.08	1.32	18.54	48.94	31.11
One Year Ago <i>10-20-2011</i>	1.11	2.51	7.23	23.05	27.40	38.71



Intensity:



The Drought Monitor focuses on broad-scale conditions. Local conditions may vary. For more information on the Drought Monitor, go to <https://droughtmonitor.unl.edu/About.aspx>

Author:

Matthew Rosencrans
 CPC/NCEP/NWS/NOAA



droughtmonitor.unl.edu