

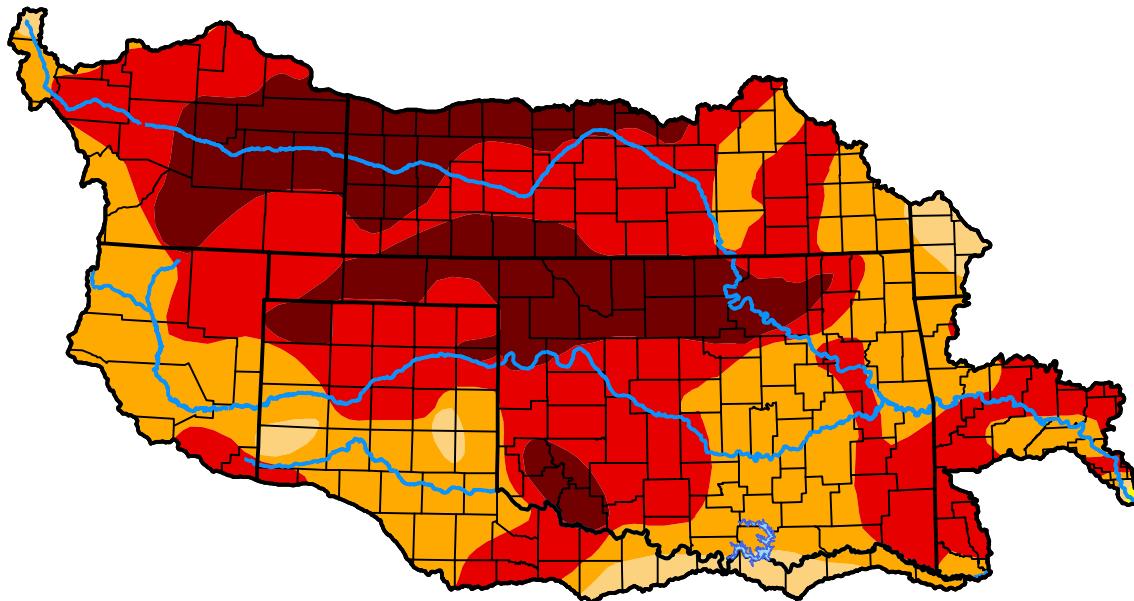
U.S. Drought Monitor

Arkansas Red Basin RFC

October 16, 2012
 (Released Thursday, Oct. 18, 2012)
 Valid 8 a.m. EDT

Drought Conditions (Percent Area)

	None	D0-D4	D1-D4	D2-D4	D3-D4	D4
Current	0.00	100.00	99.94	96.37	63.57	21.75
Last Week <i>10-11-2012</i>	0.00	100.00	99.94	96.89	73.47	23.83
3 Months Ago <i>07-19-2012</i>	0.00	100.00	98.39	77.37	34.57	4.76
Start of Calendar Year <i>01-05-2012</i>	13.02	86.98	77.81	48.50	17.94	2.56
Start of Water Year <i>09-27-2012</i>	0.00	100.00	99.92	98.60	80.06	31.11
One Year Ago <i>10-20-2011</i>	1.11	98.89	96.38	89.15	66.11	38.71



Intensity:



The Drought Monitor focuses on broad-scale conditions. Local conditions may vary. For more information on the Drought Monitor, go to <https://droughtmonitor.unl.edu/About.aspx>

Author:

Matthew Rosencrans
 CPC/NCEP/NWS/NOAA



droughtmonitor.unl.edu