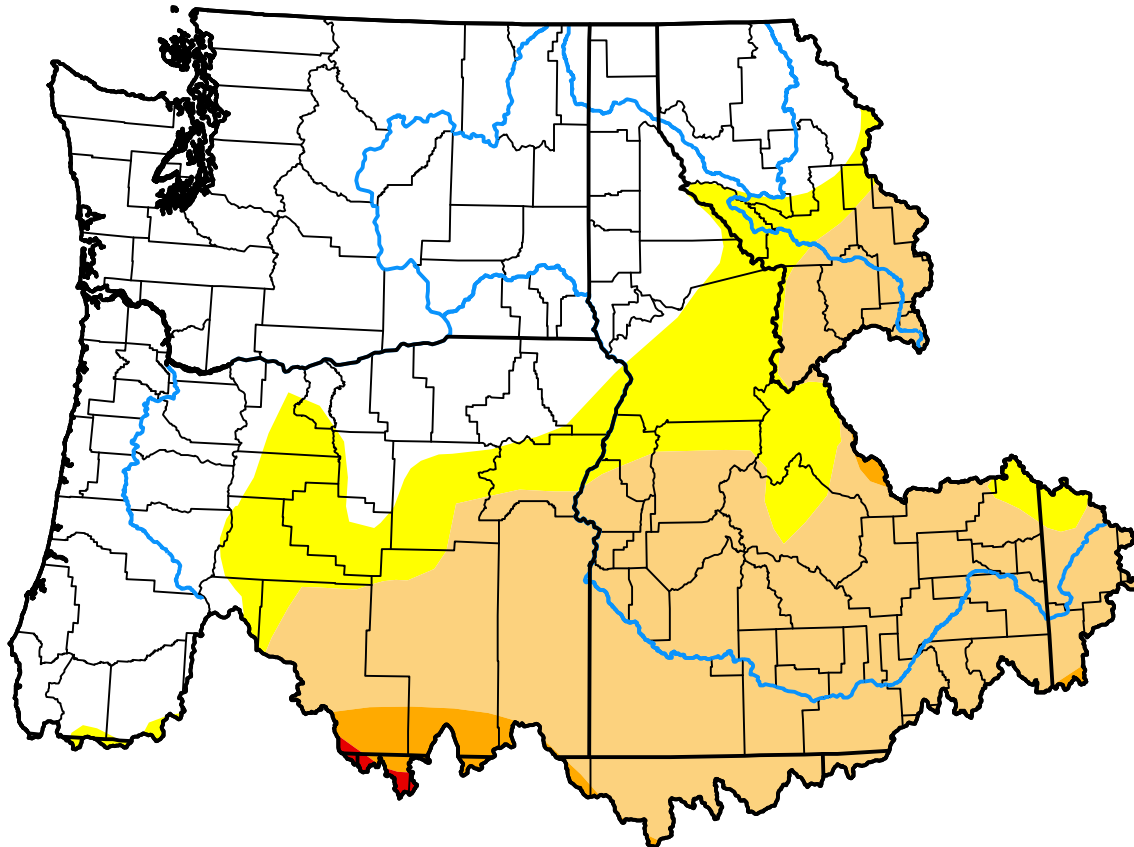


# U.S. Drought Monitor Northwest RFC

**October 16, 2012**  
(Released Thursday, Oct. 18, 2012)  
Valid 8 a.m. EDT



*Drought Conditions (Percent Area)*

	None	D0	D1	D2	D3	D4
<b>Current</b>	50.74	14.09	33.48	1.52	0.16	0.00
<b>Last Week</b> <i>10-11-2012</i>	37.99	26.80	33.55	1.49	0.16	0.00
<b>3 Months Ago</b> <i>07-19-2012</i>	62.90	23.60	13.05	0.45	0.00	0.00
<b>Start of Calendar Year</b> <i>01-05-2012</i>	53.73	39.19	7.08	0.00	0.00	0.00
<b>Start of Water Year</b> <i>09-27-2012</i>	52.78	12.67	32.90	1.38	0.27	0.00
<b>One Year Ago</b> <i>10-20-2011</i>	99.59	0.41	0.00	0.00	0.00	0.00

Intensity:



*The Drought Monitor focuses on broad-scale conditions. Local conditions may vary. For more information on the Drought Monitor, go to <https://droughtmonitor.unl.edu/About.aspx>*

Author:

Matthew Rosencrans  
CPC/NCEP/NWS/NOAA

