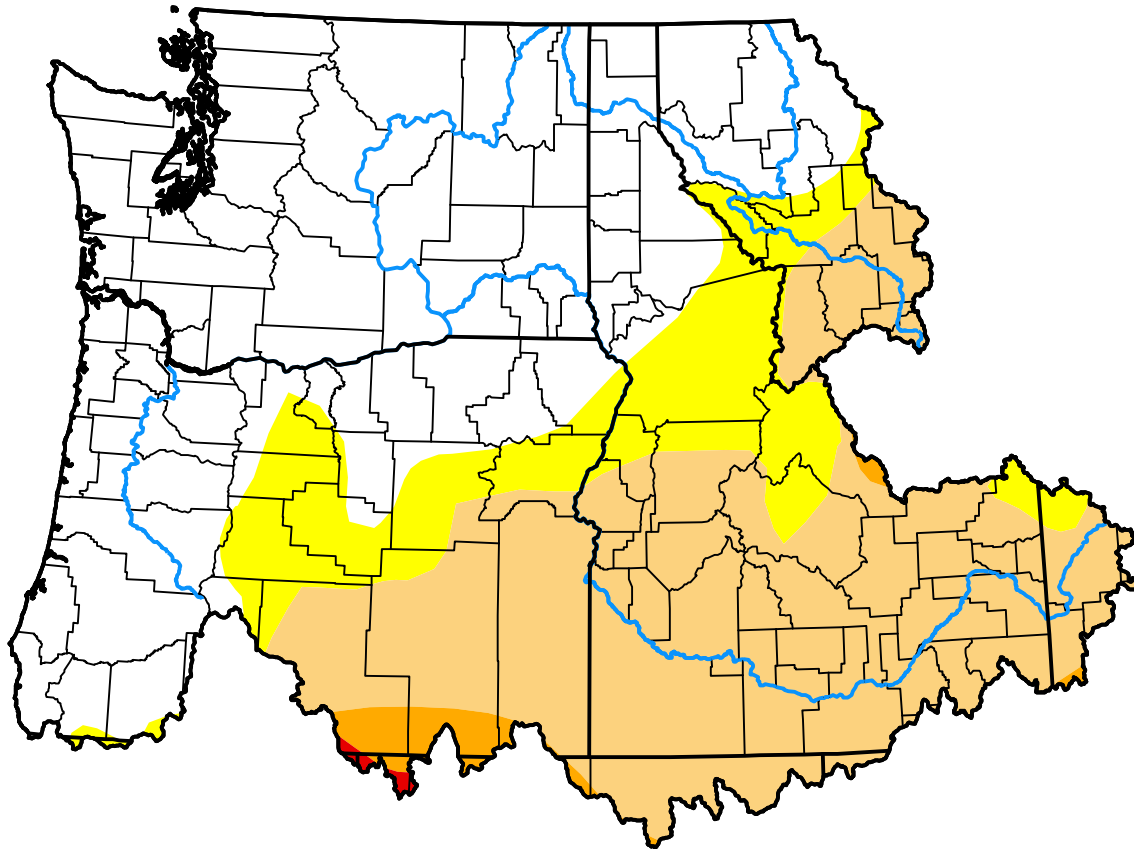


U.S. Drought Monitor Northwest RFC

October 16, 2012
(Released Thursday, Oct. 18, 2012)
Valid 8 a.m. EDT



Drought Conditions (Percent Area)

	None	D0-D4	D1-D4	D2-D4	D3-D4	D4
Current	50.74	49.26	35.16	1.68	0.16	0.00
Last Week <i>10-11-2012</i>	37.99	62.01	35.20	1.65	0.16	0.00
3 Months Ago <i>07-19-2012</i>	62.90	37.10	13.50	0.45	0.00	0.00
Start of Calendar Year <i>01-05-2012</i>	53.73	46.27	7.08	0.00	0.00	0.00
Start of Water Year <i>09-27-2012</i>	52.78	47.22	34.55	1.65	0.27	0.00
One Year Ago <i>10-20-2011</i>	99.59	0.41	0.00	0.00	0.00	0.00

Intensity:



The Drought Monitor focuses on broad-scale conditions. Local conditions may vary. For more information on the Drought Monitor, go to <https://droughtmonitor.unl.edu/About.aspx>

Author:

Matthew Rosencrans
CPC/NCEP/NWS/NOAA

