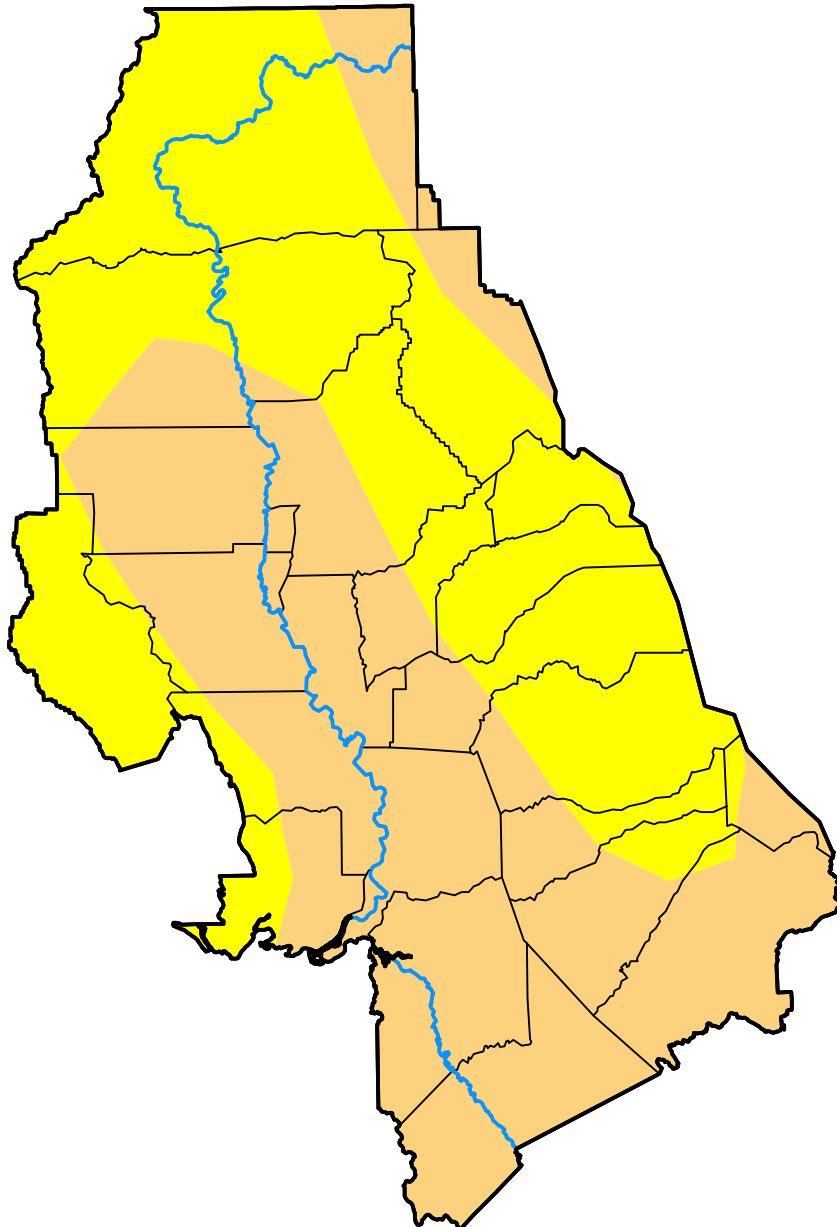


U.S. Drought Monitor Sacramento, CA WFO

October 16, 2012
(Released Thursday, Oct. 18, 2012)
Valid 8 a.m. EDT



Drought Conditions (Percent Area)

	None	D0-D4	D1-D4	D2-D4	D3-D4	D4
Current	0.00	100.00	50.93	0.00	0.00	0.00
Last Week <i>10-11-2012</i>	0.00	100.00	51.25	0.00	0.00	0.00
3 Months Ago <i>07-19-2012</i>	27.65	72.35	37.04	0.26	0.00	0.00
Start of Calendar Year <i>01-05-2012</i>	0.00	100.00	100.00	0.00	0.00	0.00
Start of Water Year <i>09-27-2012</i>	4.42	95.58	52.38	0.01	0.00	0.00
One Year Ago <i>10-20-2011</i>	100.00	0.00	0.00	0.00	0.00	0.00

Intensity:



The Drought Monitor focuses on broad-scale conditions. Local conditions may vary. For more information on the Drought Monitor, go to <https://droughtmonitor.unl.edu/About.aspx>

Author:

Matthew Rosencrans
CPC/NCEP/NWS/NOAA

