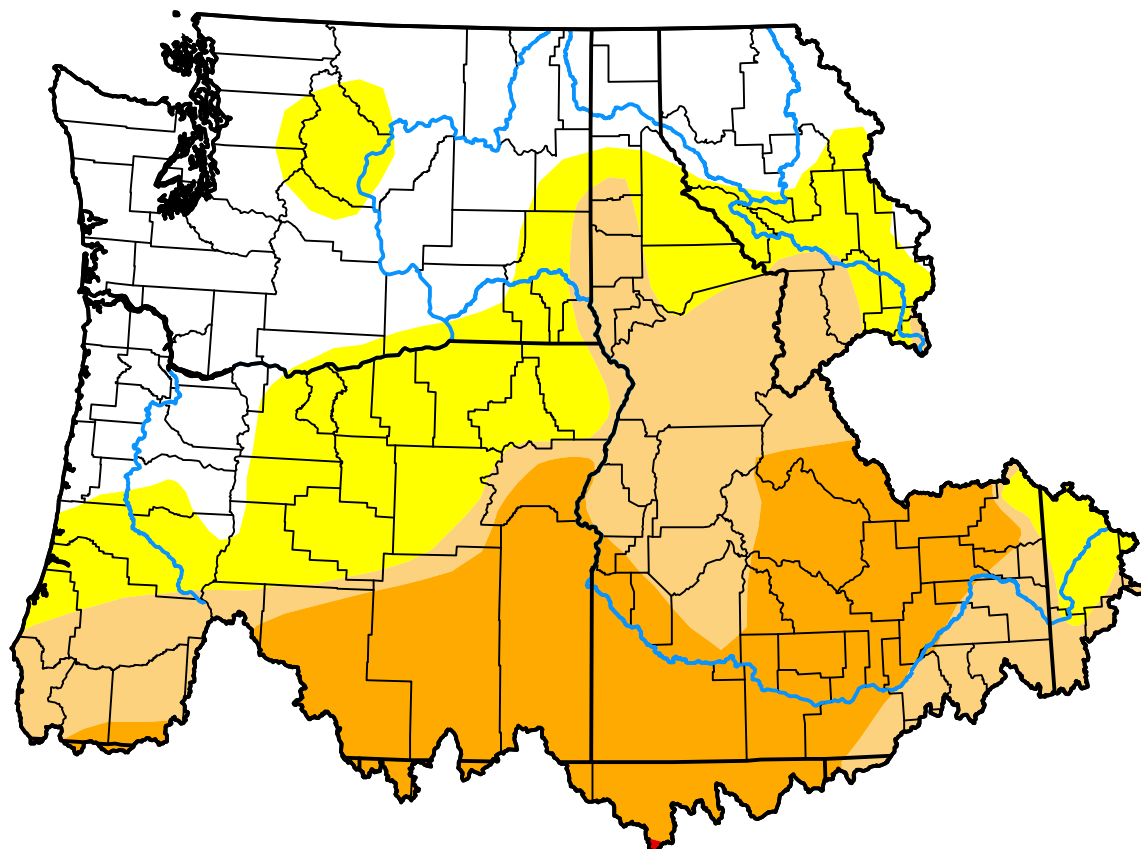


U.S. Drought Monitor

Pacific Northwest Watershed

July 16, 2013
 (Released Thursday, Jul. 18, 2013)
 Valid 8 a.m. EDT



Drought Conditions (Percent Area)

	None	D0	D1	D2	D3	D4
Current	30.33	23.64	20.66	25.35	0.02	0.00
Last Week <i>07-11-2013</i>	33.53	22.96	25.95	17.54	0.02	0.00
3 Months Ago <i>04-18-2013</i>	61.73	23.51	14.43	0.32	0.00	0.00
Start of Calendar Year <i>01-03-2013</i>	67.23	7.49	23.71	1.58	0.00	0.00
Start of Water Year <i>09-27-2012</i>	52.78	12.67	32.89	1.39	0.27	0.00
One Year Ago <i>07-19-2012</i>	62.90	23.60	13.04	0.46	0.00	0.00

Intensity:



The Drought Monitor focuses on broad-scale conditions. Local conditions may vary. For more information on the Drought Monitor, go to <https://droughtmonitor.unl.edu/About.aspx>

Author:

Richard Heim
 NCEI/NOAA

