

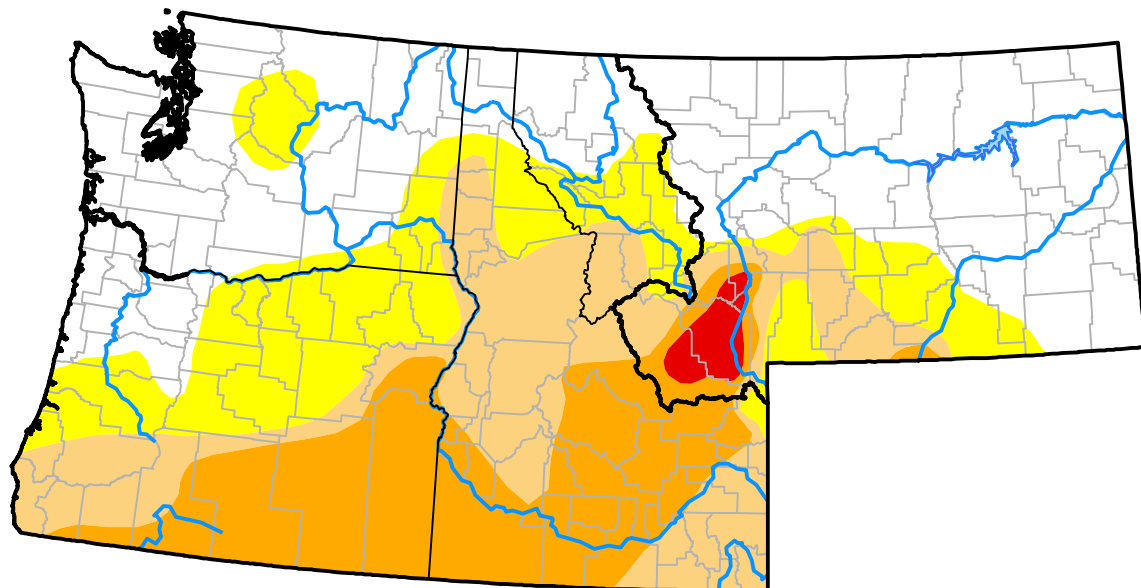
U.S. Drought Monitor

Pacific Northwest RDEWS

July 16, 2013
 (Released Thursday, Jul. 18, 2013)
 Valid 8 a.m. EDT

Drought Conditions (Percent Area)

	None	D0-D4	D1-D4	D2-D4	D3-D4	D4
Current	30.43	69.57	47.05	25.15	0.00	0.00
Last Week <i>07-11-2013</i>	33.64	66.36	44.52	17.32	0.00	0.00
3 Months Ago <i>04-18-2013</i>	62.60	37.40	15.37	0.31	0.00	0.00
Start of Calendar Year <i>01-03-2013</i>	68.05	31.95	24.12	1.87	0.00	0.00
Start of Water Year <i>09-27-2012</i>	53.33	46.67	33.48	1.87	0.19	0.00
One Year Ago <i>07-19-2012</i>	63.45	36.55	13.53	0.43	0.00	0.00



Intensity:



The Drought Monitor focuses on broad-scale conditions. Local conditions may vary. For more information on the Drought Monitor, go to <https://droughtmonitor.unl.edu/About.aspx>

Author:

Richard Heim
 NCEI/NOAA

