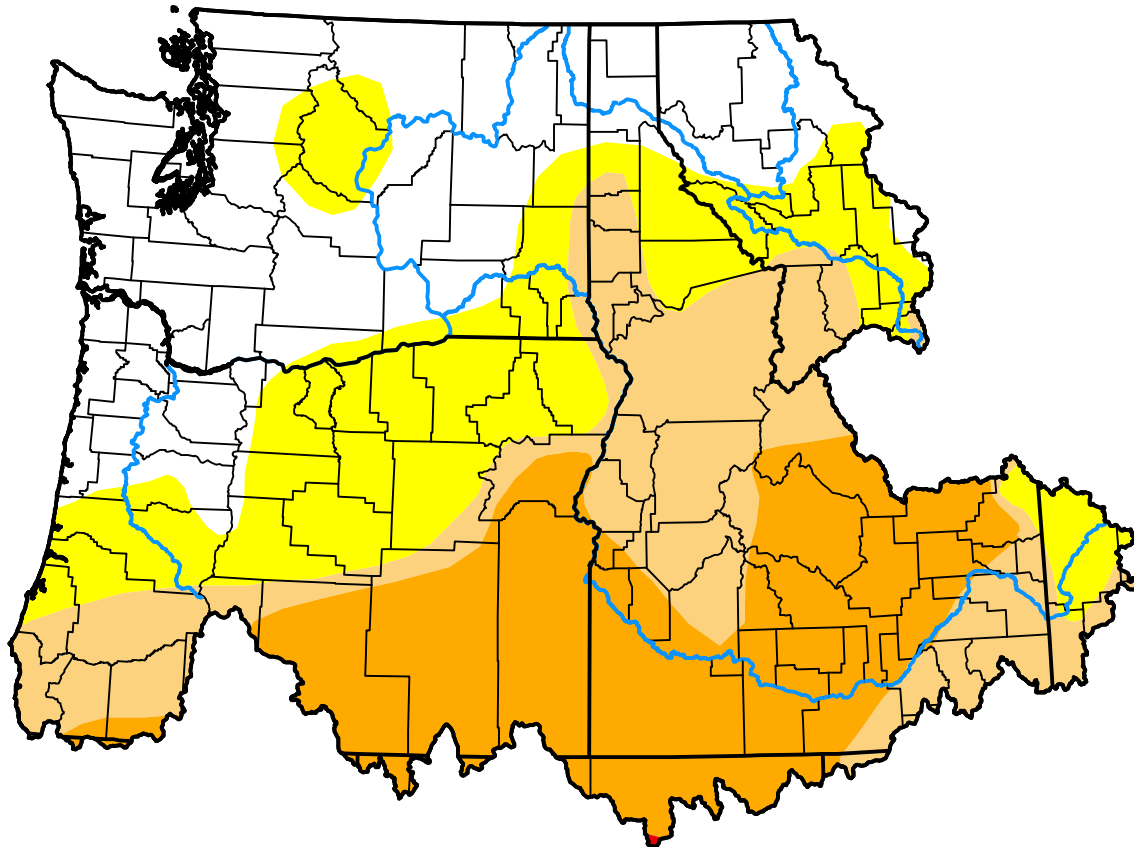


U.S. Drought Monitor Northwest RFC

July 16, 2013
(Released Thursday, Jul. 18, 2013)
Valid 8 a.m. EDT



Drought Conditions (Percent Area)

	None	D0-D4	D1-D4	D2-D4	D3-D4	D4
Current	30.33	69.67	46.01	25.38	0.02	0.00
Last Week <i>07-11-2013</i>	33.53	66.47	43.49	17.56	0.02	0.00
3 Months Ago <i>04-18-2013</i>	61.74	38.26	14.77	0.32	0.00	0.00
Start of Calendar Year <i>01-03-2013</i>	67.22	32.78	25.29	1.58	0.00	0.00
Start of Water Year <i>09-27-2012</i>	52.78	47.22	34.55	1.65	0.27	0.00
One Year Ago <i>07-19-2012</i>	62.90	37.10	13.50	0.45	0.00	0.00

Intensity:



The Drought Monitor focuses on broad-scale conditions. Local conditions may vary. For more information on the Drought Monitor, go to <https://droughtmonitor.unl.edu/About.aspx>

Author:

Richard Heim
NCEI/NOAA

