

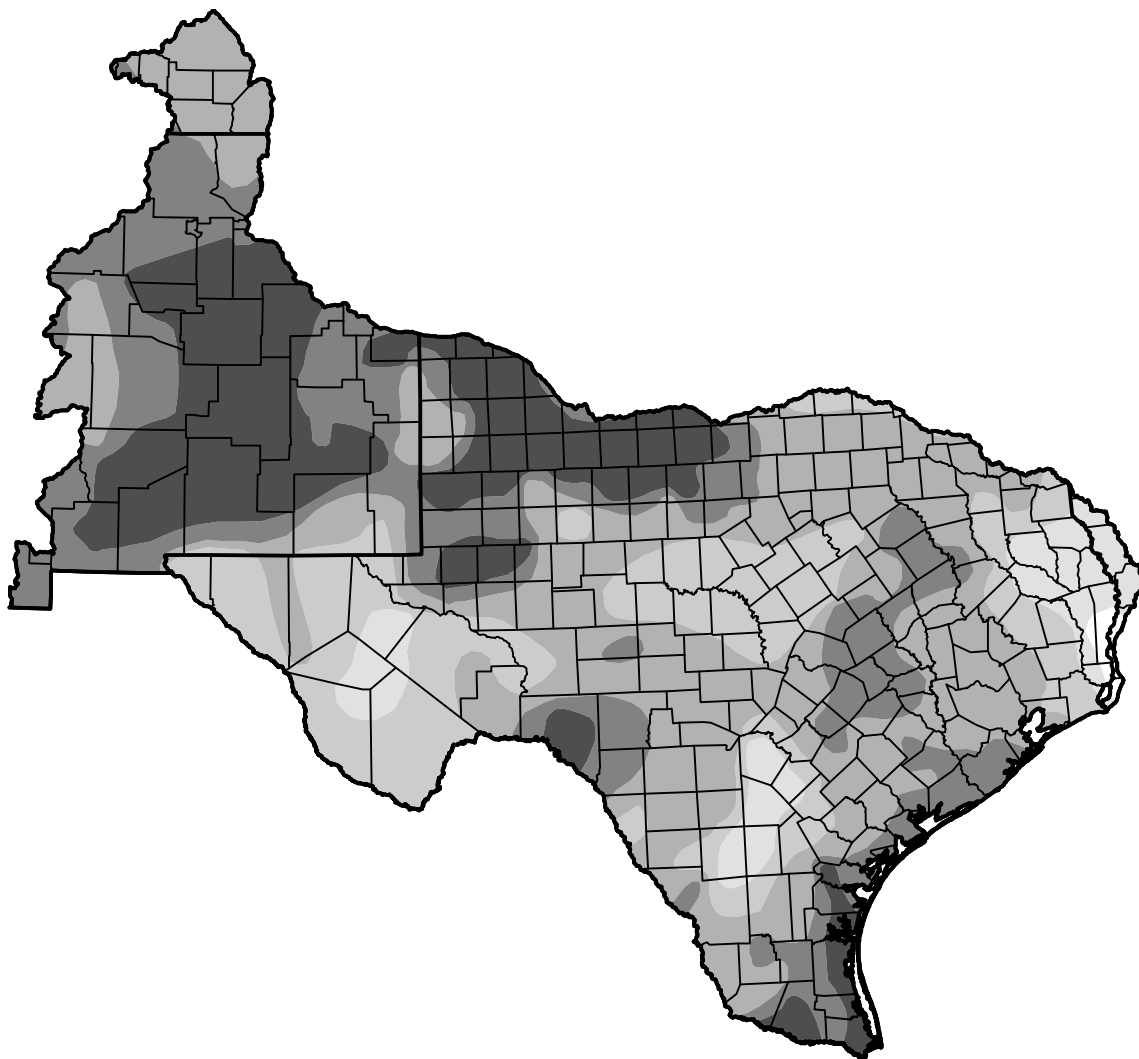
U.S. Drought Monitor West Gulf RFC

July 16, 2013
(Released Thursday, Jul. 18, 2013)

Valid 8 a.m. EDT

Drought Conditions (Percent Area)

	None	D0-D4	D1-D4	D2-D4	D3-D4	D4
Current	0.39	99.61	94.44	76.53	42.04	19.54
Last Week <i>07-11-2013</i>	0.82	99.18	92.27	80.14	44.54	21.14
3 Months Ago <i>04-18-2013</i>	1.72	98.28	91.89	77.23	41.08	10.15
Start of Calendar Year <i>01-03-2013</i>	2.91	97.09	88.19	70.05	24.61	5.98
Start of Water Year <i>09-27-2012</i>	8.36	91.64	81.52	55.59	17.29	3.08
One Year Ago <i>07-19-2012</i>	11.22	88.78	76.25	42.95	13.86	0.00



Intensity:



The Drought Monitor focuses on broad-scale conditions. Local conditions may vary. For more information on the Drought Monitor, go to <https://droughtmonitor.unl.edu/About.aspx>

Author:

Richard Heim
NCEI/NOAA



droughtmonitor.unl.edu